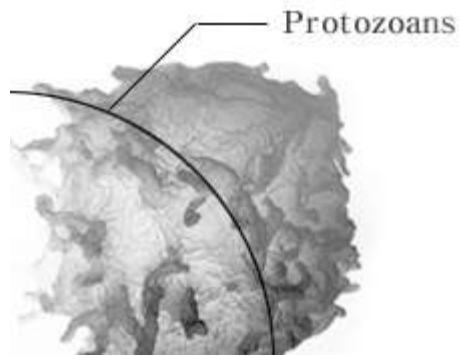
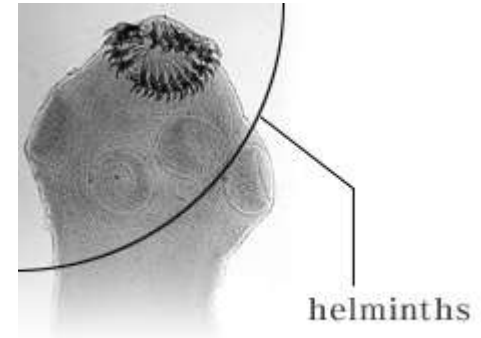


Parazitologija

Črevesni in tkivni paraziti
Medicinsko pomembne žuželke



Paraziti

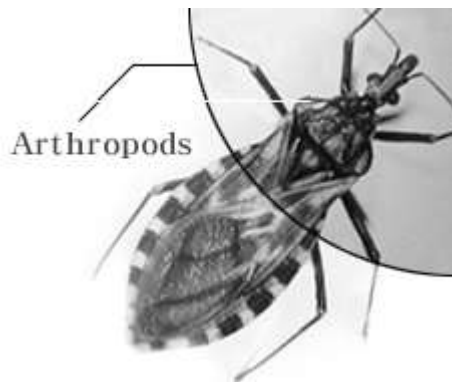


- Praživali

- Bičkarji
- Amebe
- Trosovc
- Migetalkarji

- Helminti

- Metljaji
- Trakulje
- Gliste



- Členonožci

- raki
- pajkovci
- žuželke

Osnovni pojmi



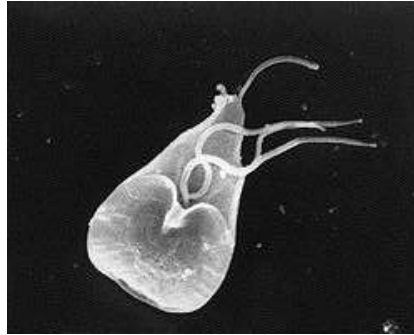
- Parazitizem

- Simbioza
 - Komenzalizem
 - Mutualizem
 - Inkvilinizem

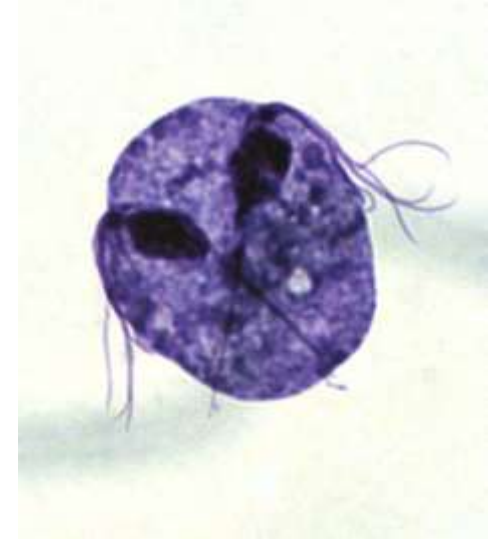


Praživali: bičkarji

- *Giardia lamblia*



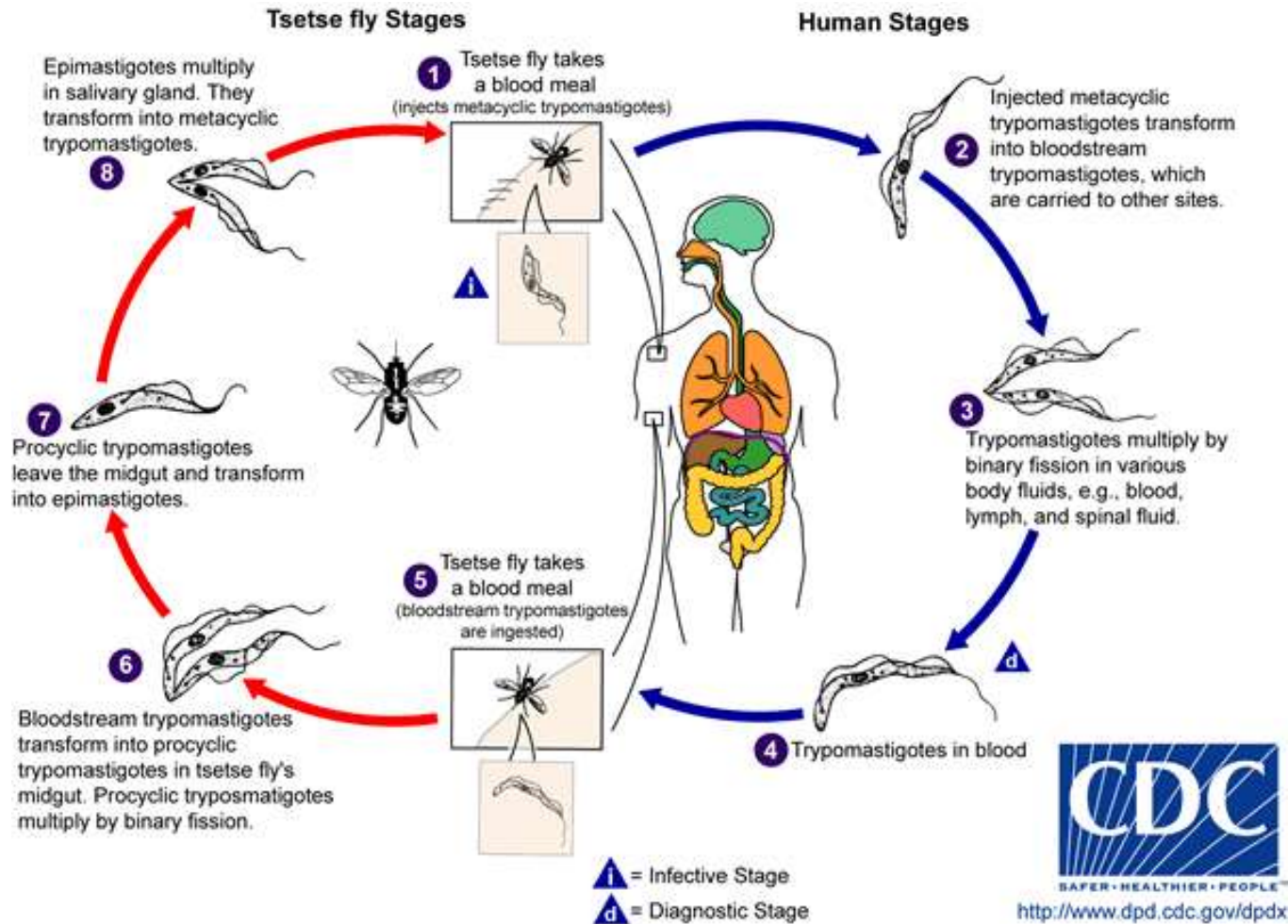
- *Trichomonas vaginalis*



- *Trypanosoma*



Spalna bolezen



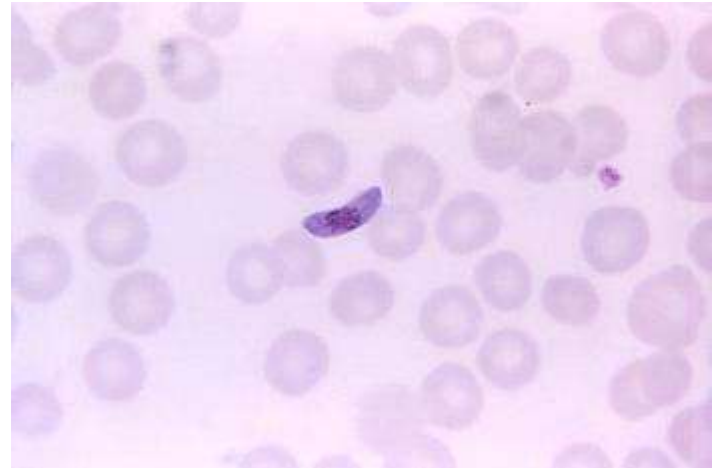
Praživali: Amebe

- *Entamoeba histolytica*

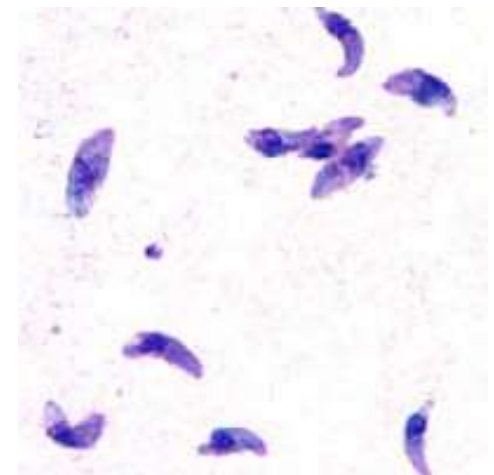


Praživali: Trosovcí

- *Plasmodium* – MALARIA

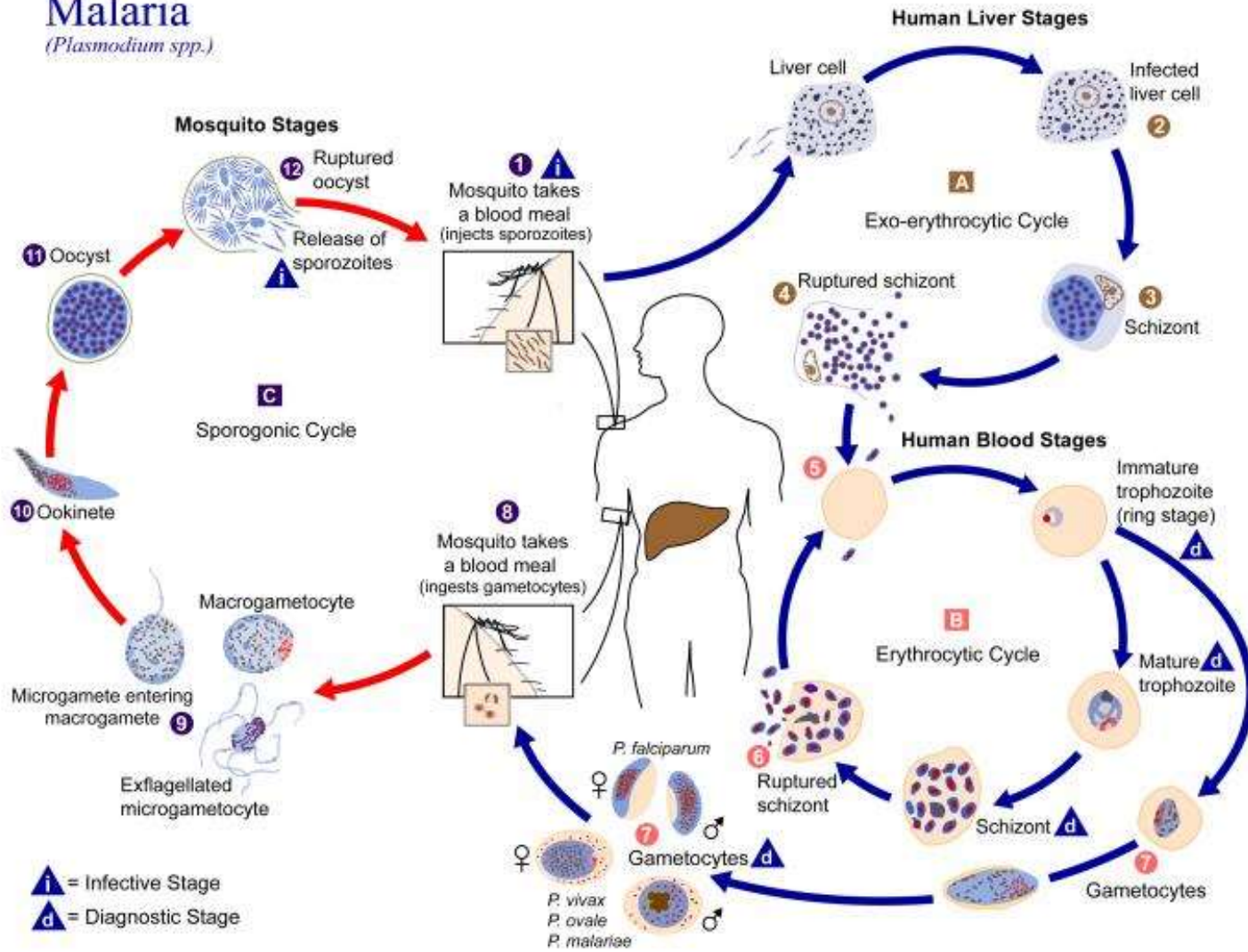


- *Toxoplasma* - TOXOPLAZMOZA

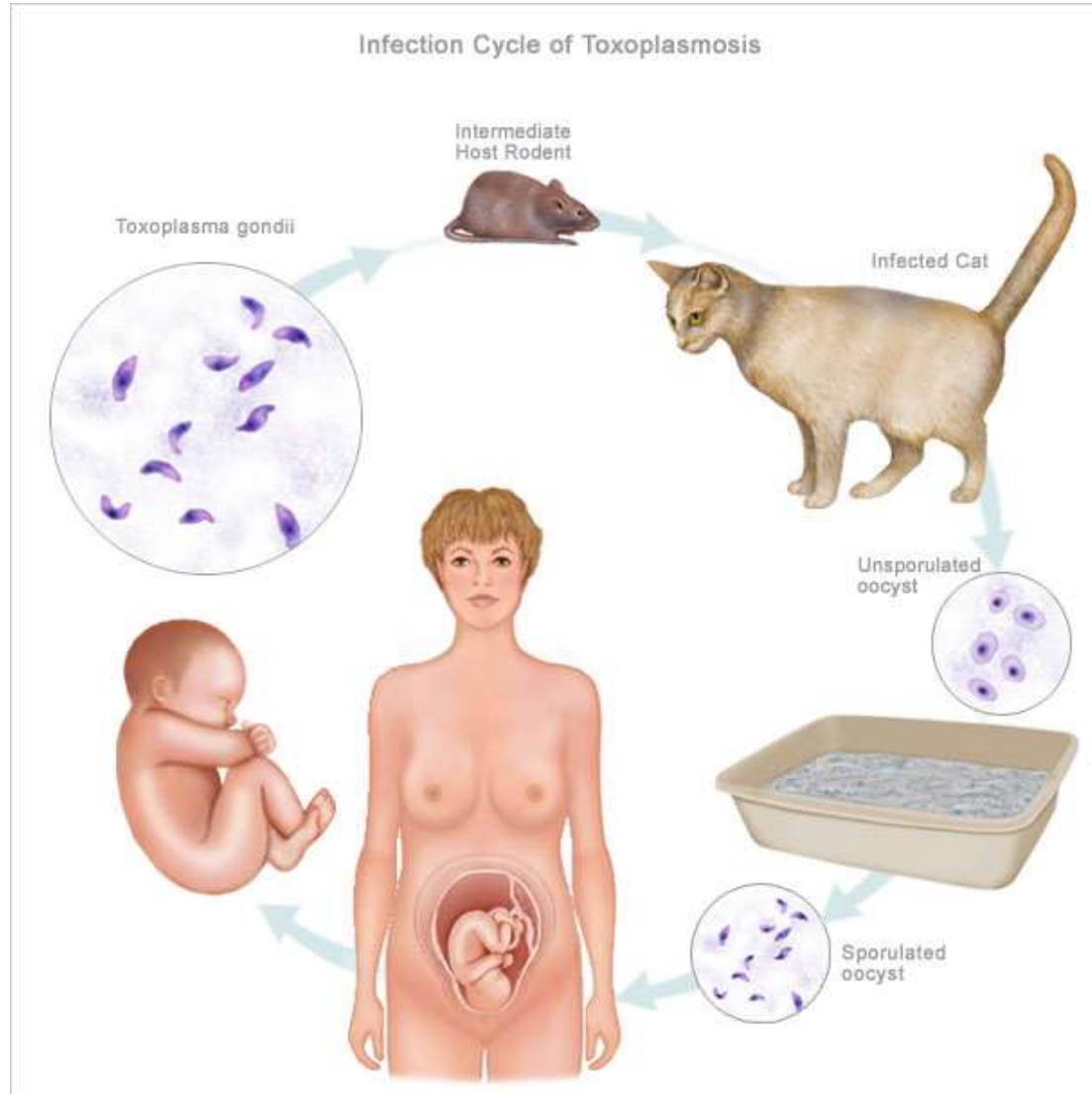


Malaria

Malaria
(*Plasmodium* spp.)



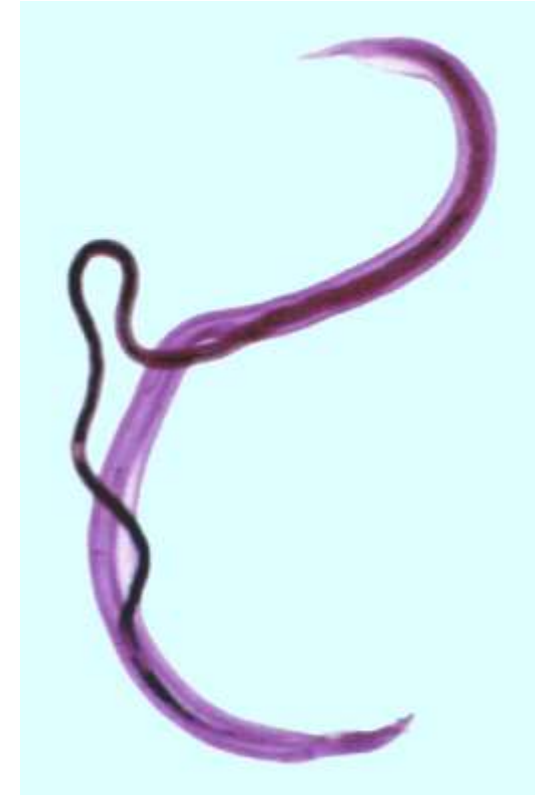
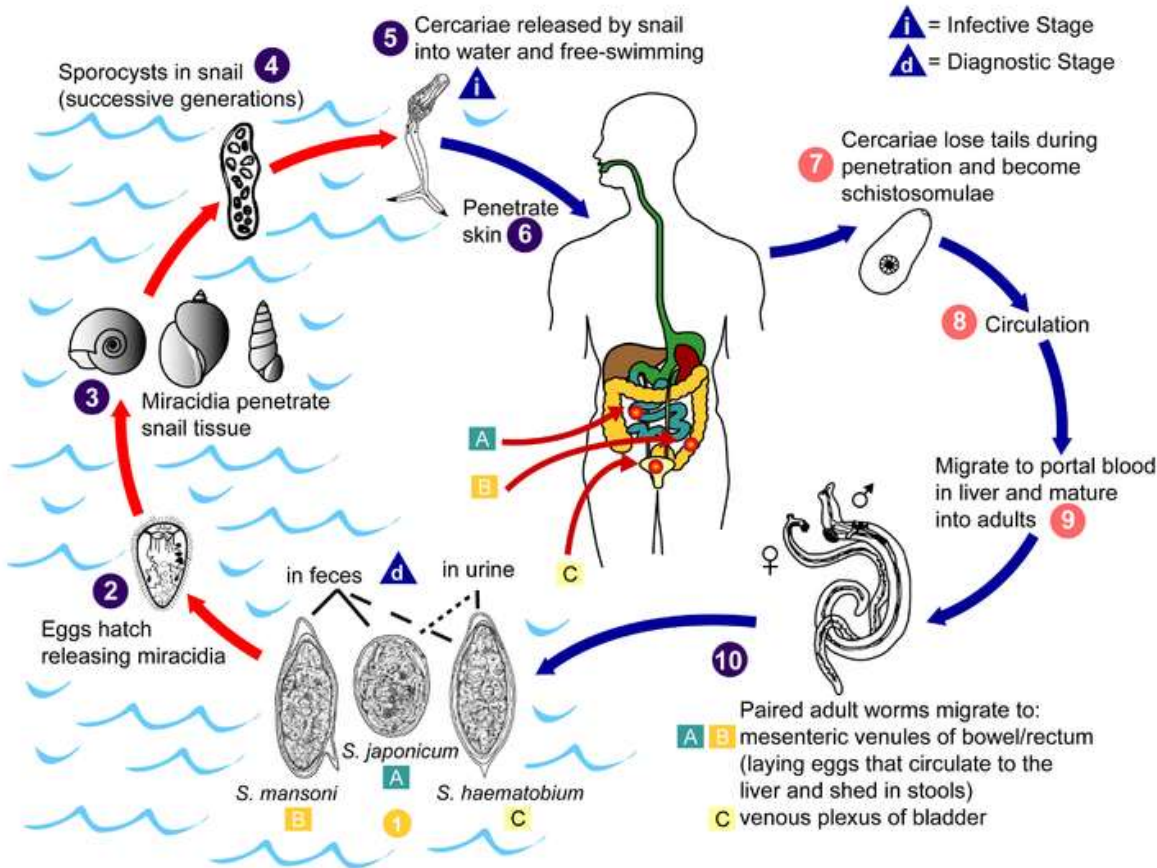
Toksoplazmoza



Helminti: Metljaji

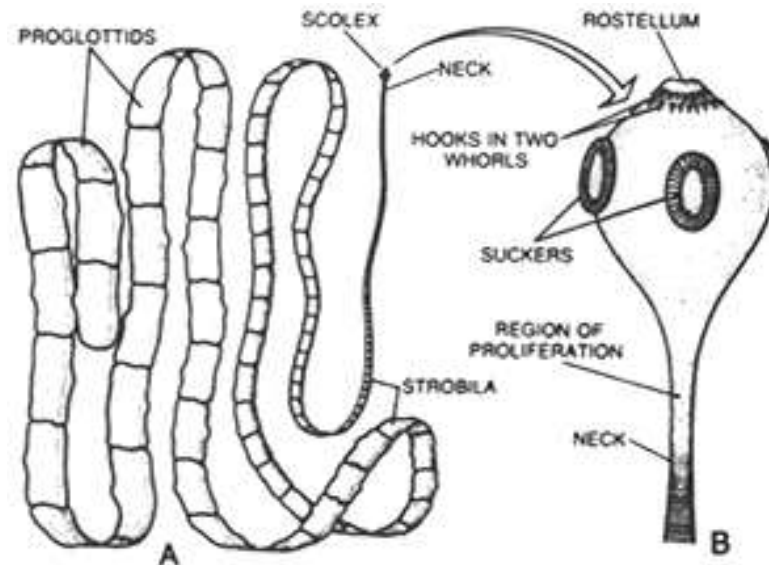
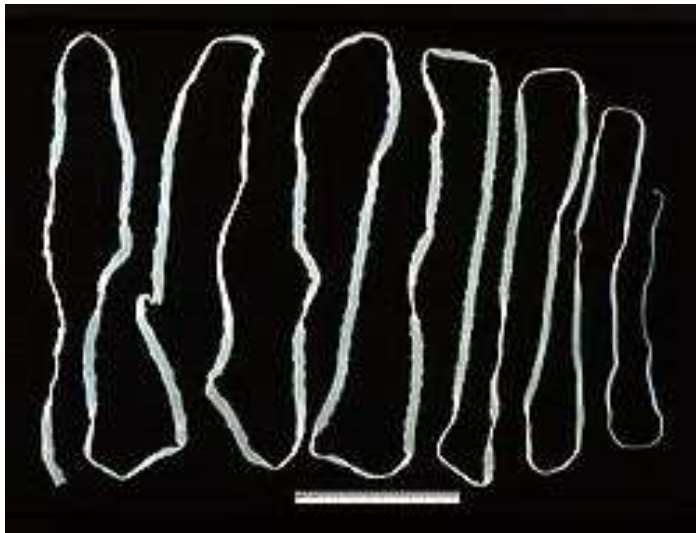
- *Schistosoma*

Schistosomiasis

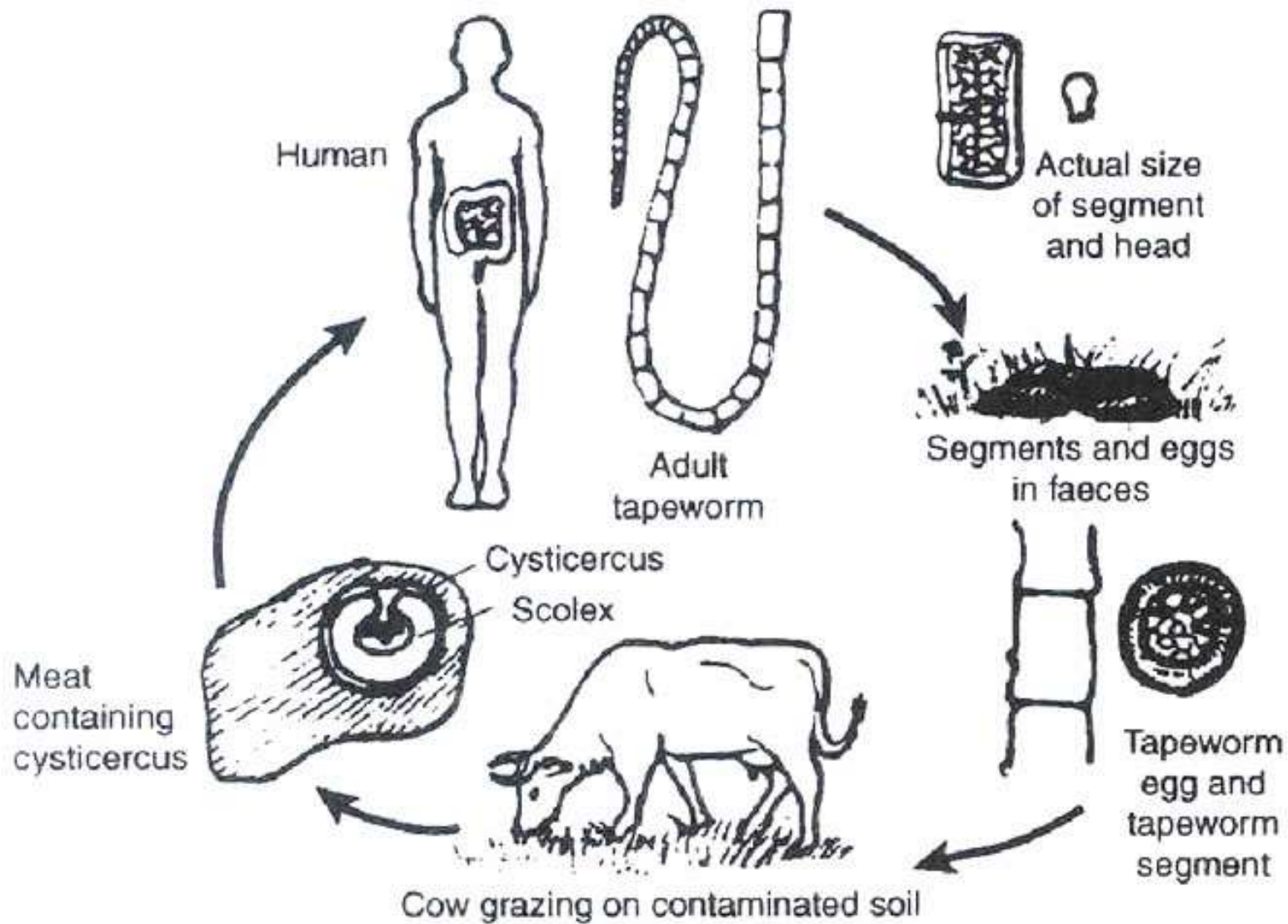


Helminti: Trakulje

- *Taenia saginata*
- *Taenia solium*

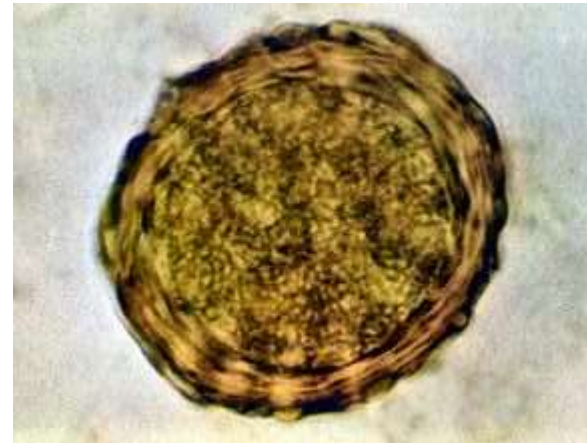


Taenia solium : A. whole; B. Its scolex



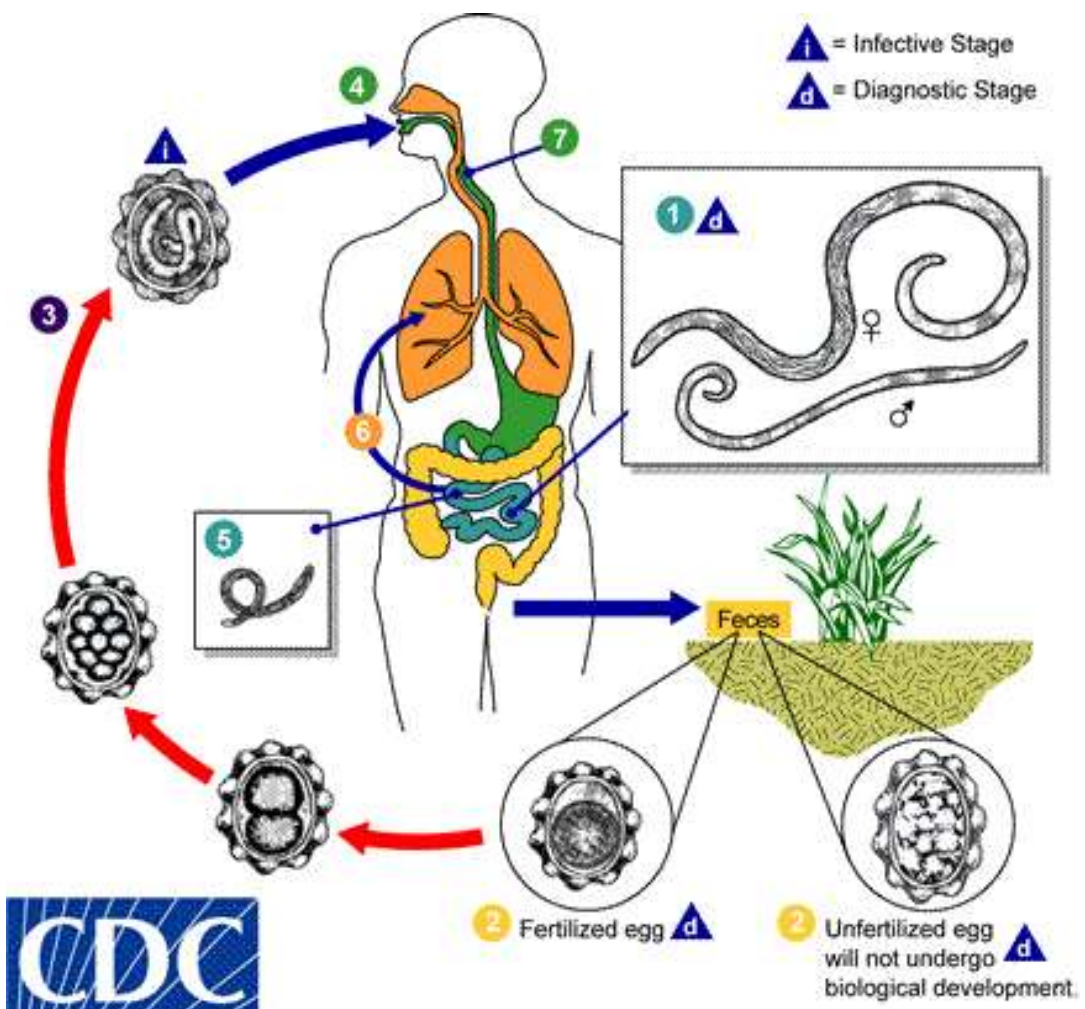
Helminti: Gliste

- *Ascaris lubricoides*



- *Enterobius vermicularis*





SAFER • HEALTHIER • PEOPLE™
<http://www.dpd.cdc.gov/dpdx>

Členonožci

- Škopioni: nevrotoksin
- Pajki: toksalbumin
- Klopi
- Pršice- garije (*Sarcoptes scabiei*)
- Uši, bolhe (rikecije, borelije,..)
- Komarji
- Mušice
- Muhe
- Obadi



