

Kritosemenke

Magnoliidae, Ranunculidae...

Angiospermae, scl. Magnoliidae

- Amborellaceae
- Austrobaileyaceae
- Canellaceae
- Illiciaceae
- Nymphaeaceae
- [+Cabombaceae]
- Rafflesiaceae
- Winteraceae
- Ceratophyllales
- Ceratophyllaceae
- Laurales
- Lauraceae
- Monimiaceae ...
- Magnoliales
- Annonaceae
- Degeneriaceae
- Magnoliaceae
- Myristicaceae ...
- Piperales
- Aristolochiaceae
- Piperaceae ...

Angiospermae, scl. Magnoliidae

- Amborellaceae

[*] P₅₋₈ A_∞ // G₅₋₆

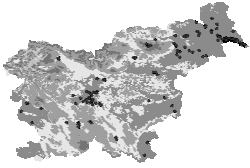


Amborella trichopoda

Angiospermae, scl. Magnoliidae

- Nymphaeaceae – LOKVANJEVKE

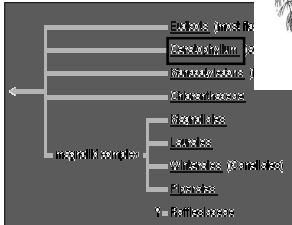
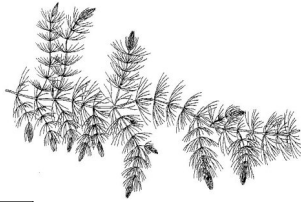
[*] $K_{\infty} C_{8-\infty} A_{3-\infty} \underline{G/G}^{-}_{(\infty)}$



Angiospermae, scl. Magnoliidae

Ceratophyllales

- Ceratophyllaceae - ROGOLISTOVKE

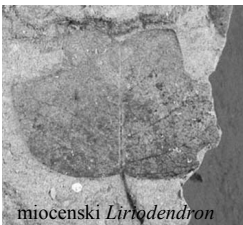


* $P_{\infty} A_{\infty} / \underline{G}_1$ (enospolni)

Angiospermae, scl. Magnoliidae

Magnoliales

- Magnoliaceae - MAGNOLIJEVKE



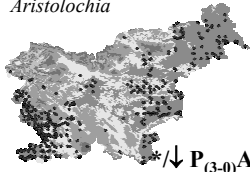
[*] $K_3 C_{6-\infty} A_{\infty} \underline{G}_{\infty}$

Angiospermae, scl. Magnoliidae

Piperales

- Aristolochiaceae - PODRAŠČEVKE

Aristolochia



* / ↓ P₍₃₋₀₎ A₆₋₁₂ G⁻₍₄₋₆₎

HÄLLBÖL, ARISTOLOCHIA CLEMATIS L.

Angiospermae, “Eudicots”



- Buxaceae ...
- Proteales
- Nelumbonaceae
- Platanaceae ...
- Ranunculales
- Berberidaceae
- Papaveraceae [+Fumariaceae]
- Ranunculaceae ...
- CORE EUDICOTS
- Dilleniaceae
- Vitaceae ...
- Caryophyllales (Car...ales)
- Aizoaceae
- Amaranthaceae
- Cactaceae
- Caryophyllaceae
- Polygonales
- Droseraceae
- Nepenthaceae
- Plumbaginaceae
- Polygonaceae ...

Angiospermae, “core Eudicots”

Ranunculales

- Papaveraceae – MAKOVKE
- sf. Papaveroideae*
- sf. Fumarioideae*

* / ↓ K₂ C₄₋₆ A_{∞-4} G_{∞-2}

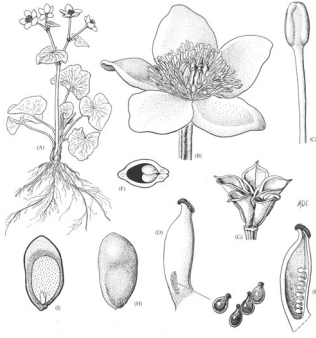


Angiospermae, “core Eudicots”

Ranunculales

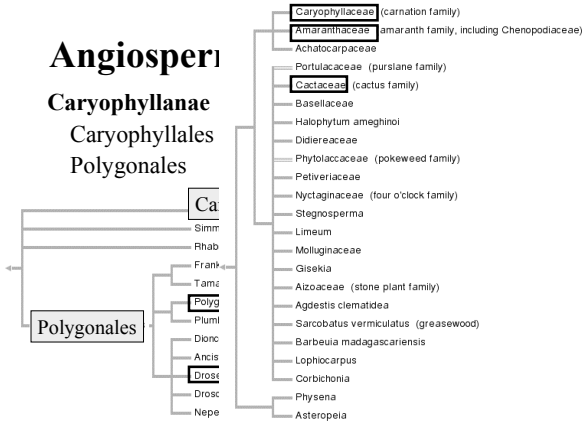
- Ranunculaceae – ZLATIČEVKE

* / ↓ $K_{\infty-3} C_{\infty-5} A_{\infty} G_{\infty-1}$



Angiosperni

Caryophyllanae Caryophyllales Polygonales



Angiospermae, “core Eudicots”

Caryophyllales

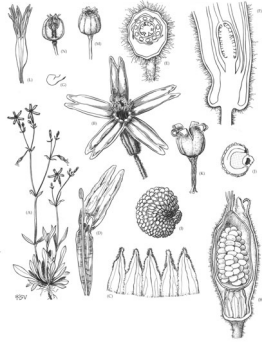
- značilna koncentrična ožiljenost
- unilakunarna kolenca
- plastidi sitk z beljakovinskimi vlakni (in kristali)
- betalaini (antociane imajo *Caryophyllaceae*)
- placentacija centralna do bazalna
- kalček ukrivljen po obodu semena
- perisperm

Angiospermae, “core Eudicots”

Caryophyllales

- Caryophyllaceae –
KLINČNICE

*K₄₋₅₍₄₋₅₎C₄₋₅A_{4+4/5+5}G₍₂₋₅₎



Angiospermae, “core Eudicots”

Caryophyllales

- Amaranthaceae –
ŠCIROVKE
(+metlikovke)



*P₃₋₅A₅G₍₂₋₃₎

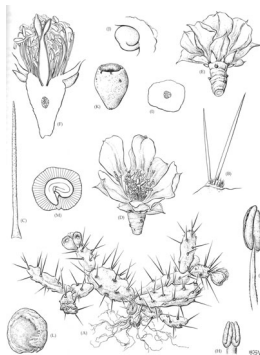


Angiospermae, “core Eudicots”

Caryophyllales

- Cactaceae –
KAKTUSOVKE

*K_{∞/0}C_∞A_∞G_(3-∞)



Angiospermae, “core Eudicots”

Polygonales

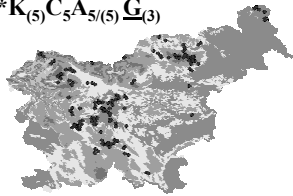
- poseben tip žleznih laskov
- bazalna placentacija
- škrobni endosperm
- pelod lahko v tetradah

Angiospermae, “core Eudicots”

Polygonales

- Droseraceae –
ROSIKOVKE

* $K_{(5)}C_5A_{5(5)}\underline{G}_{(3)}$

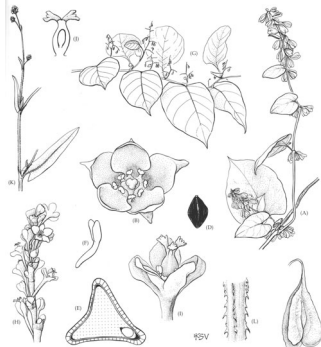
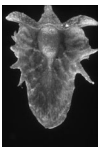


Angiospermae, “core Eudicots”

Polygonales

- Polygonaceae –
DRESNOVKE

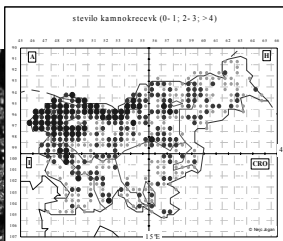
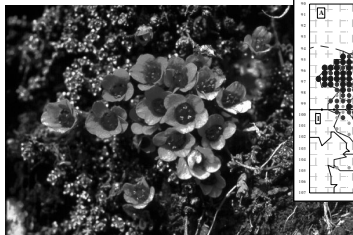
* $P_{(6-5)}A_{3+3/5}\underline{G}_3$



Angiospermae, “core Eudicots”

Saxifragales

- Saxifragaceae –
KAMNOKREČEVKE



Angiospermae, “core Eudicots”

Santalales

- Viscaceae s. s.–
OMELOVKE

