



Univerza v Ljubljani

Fakulteta za elektrotehniko

# Protokoli in standardi v TK

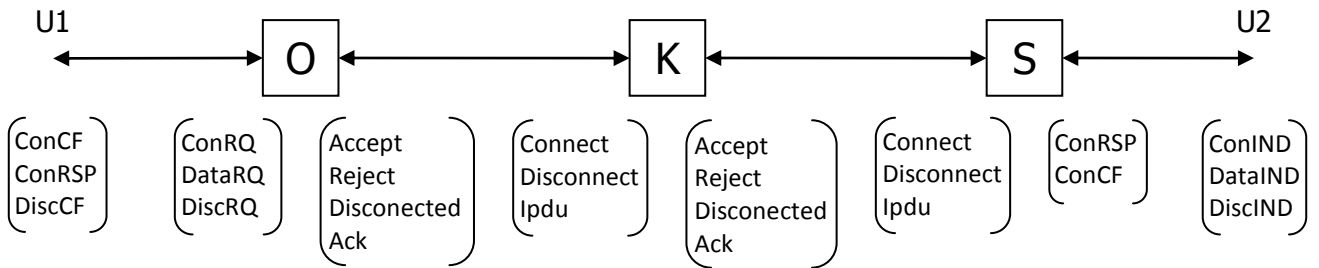
---

[2. Domača naloga - SDL]

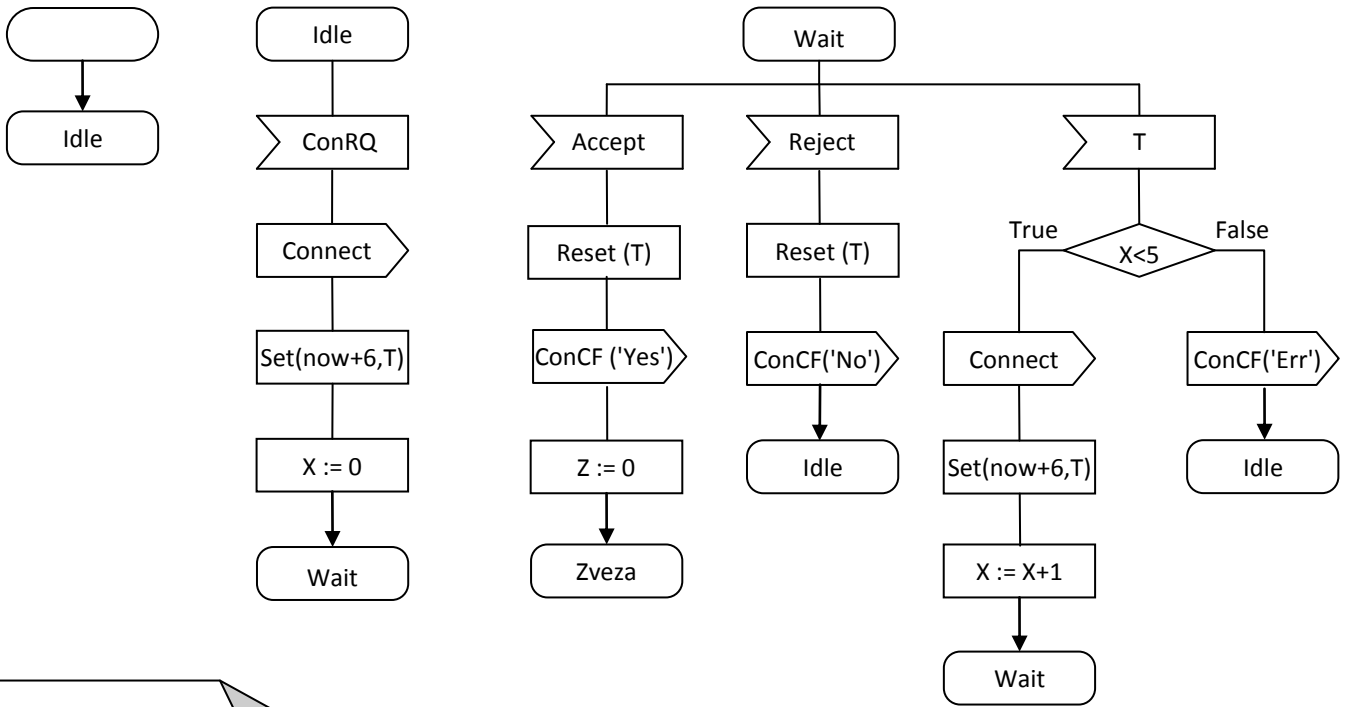
**Uroš Felician**

17.12.2008

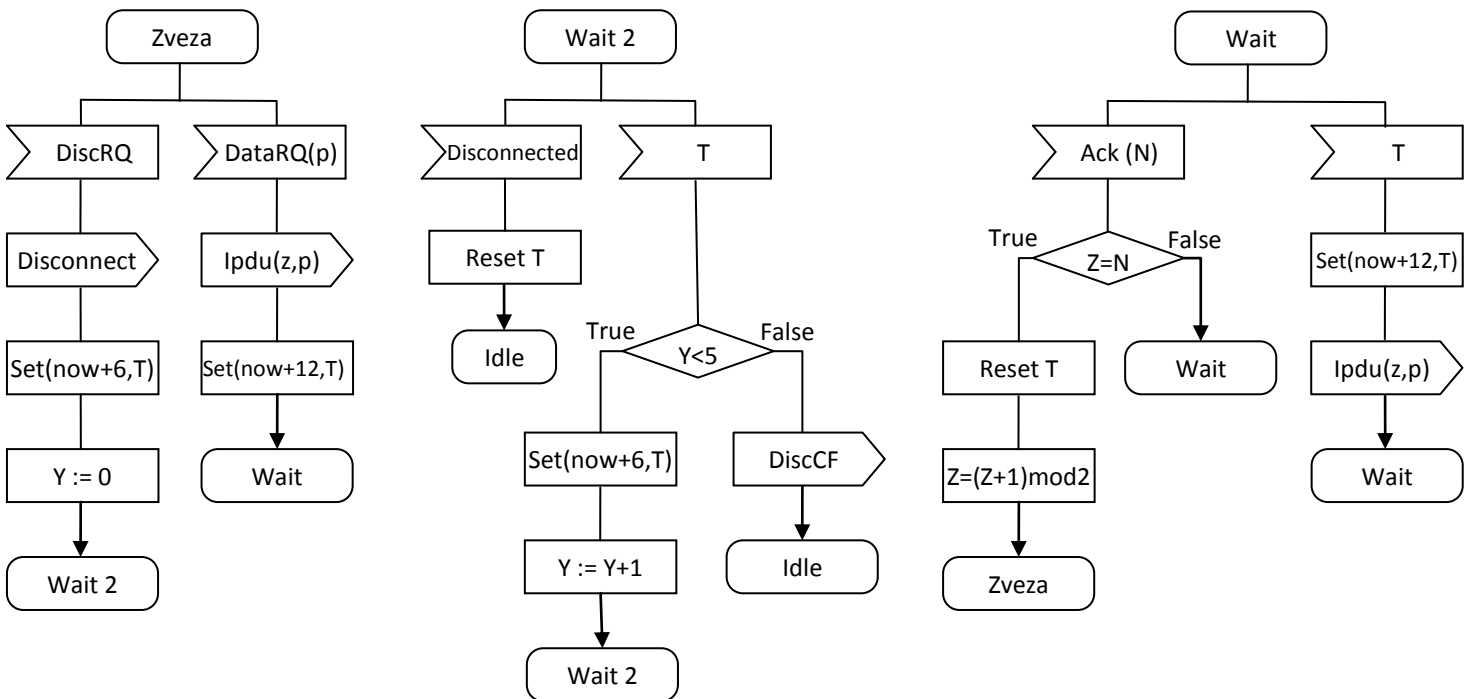
Signal:  
ConCF (string), ConRSP (boolean), DiscCF, ConRQ, DataRQ (char),  
DiscRQ, Accept, Reject, Disconnected, Ack (integer), Connect,  
Disconnect, Ipdu (integer, char), Accept, Reject, Disconnected, ConIND,  
DataIND, DiscIND (char)

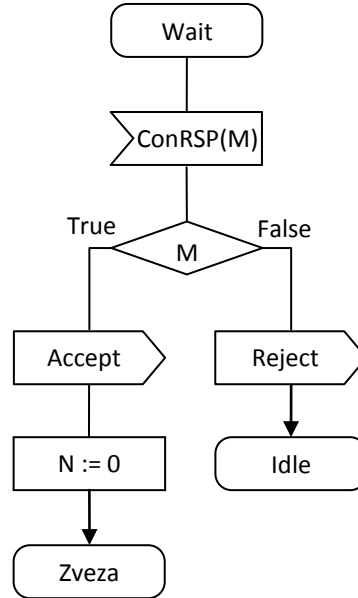
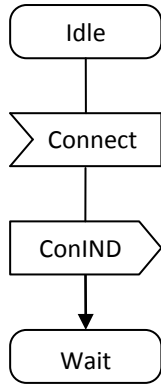
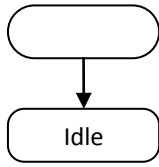


Process: Oddajnik (O)



T (timer)  
 X, Y, Z, N (integer)  
 p (char)





M (boolean)  
 N, Z (integer)  
 p (char)

