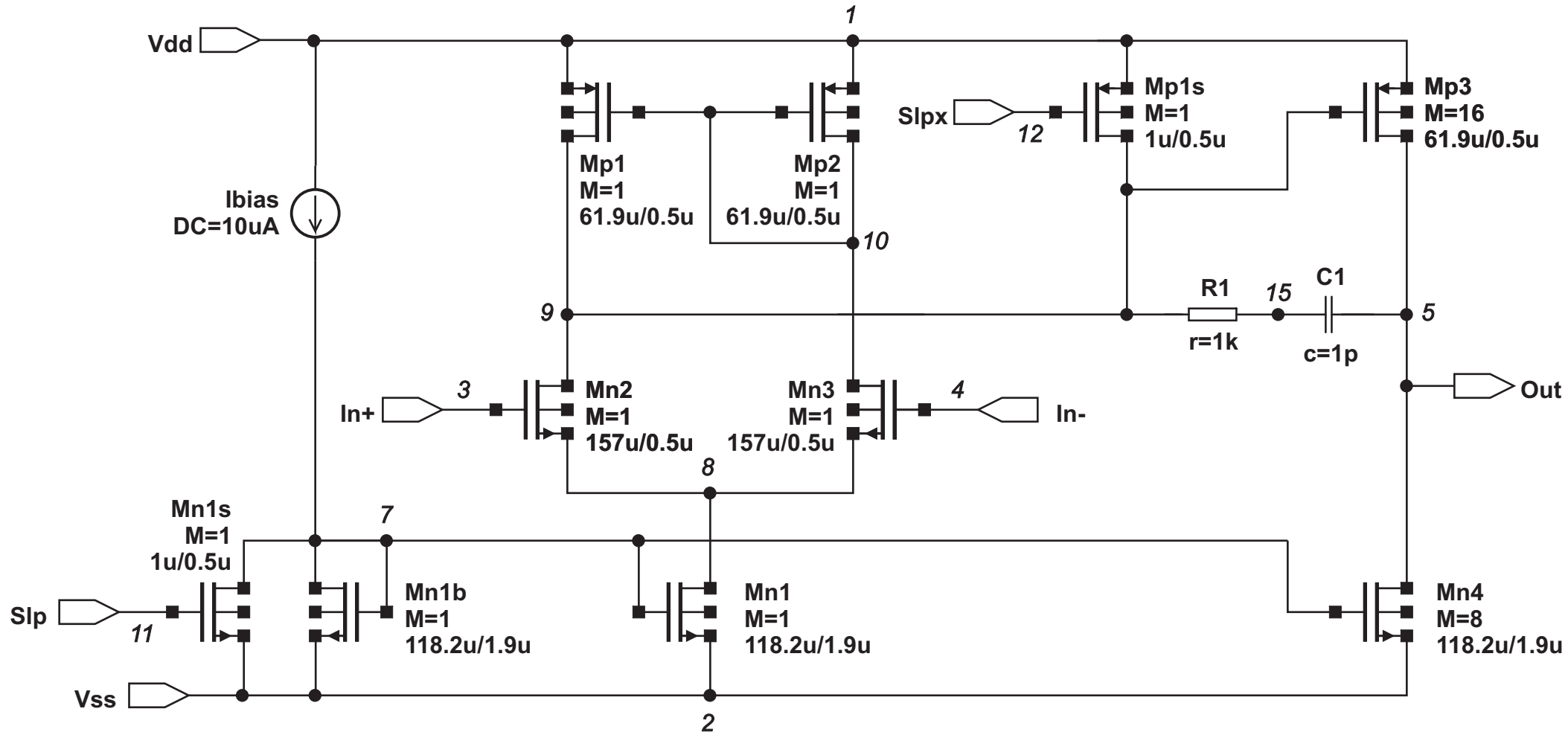
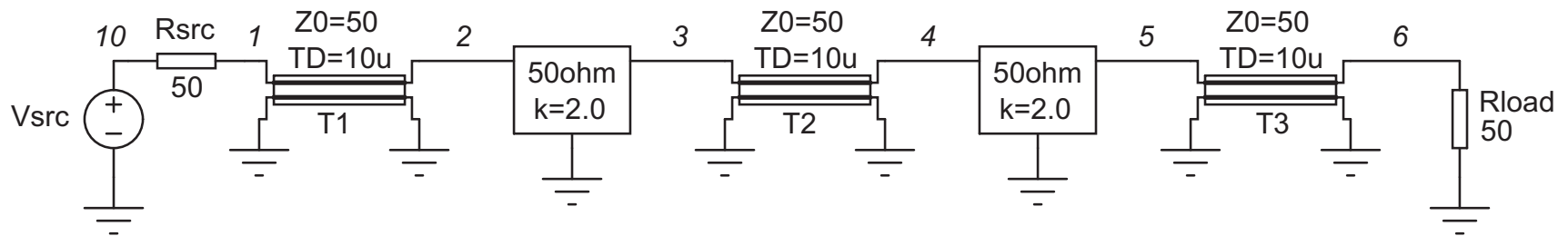
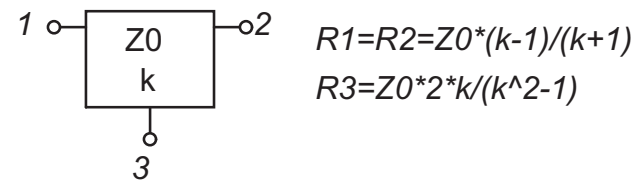
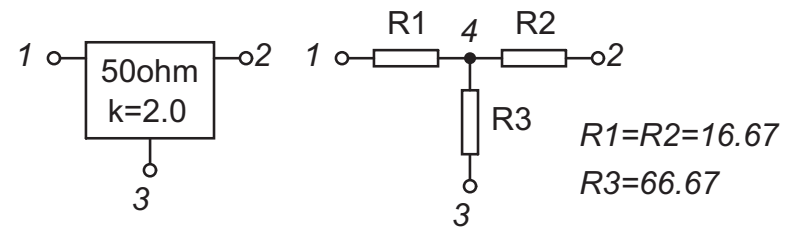
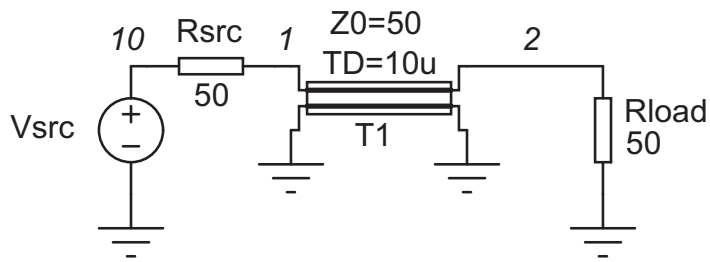


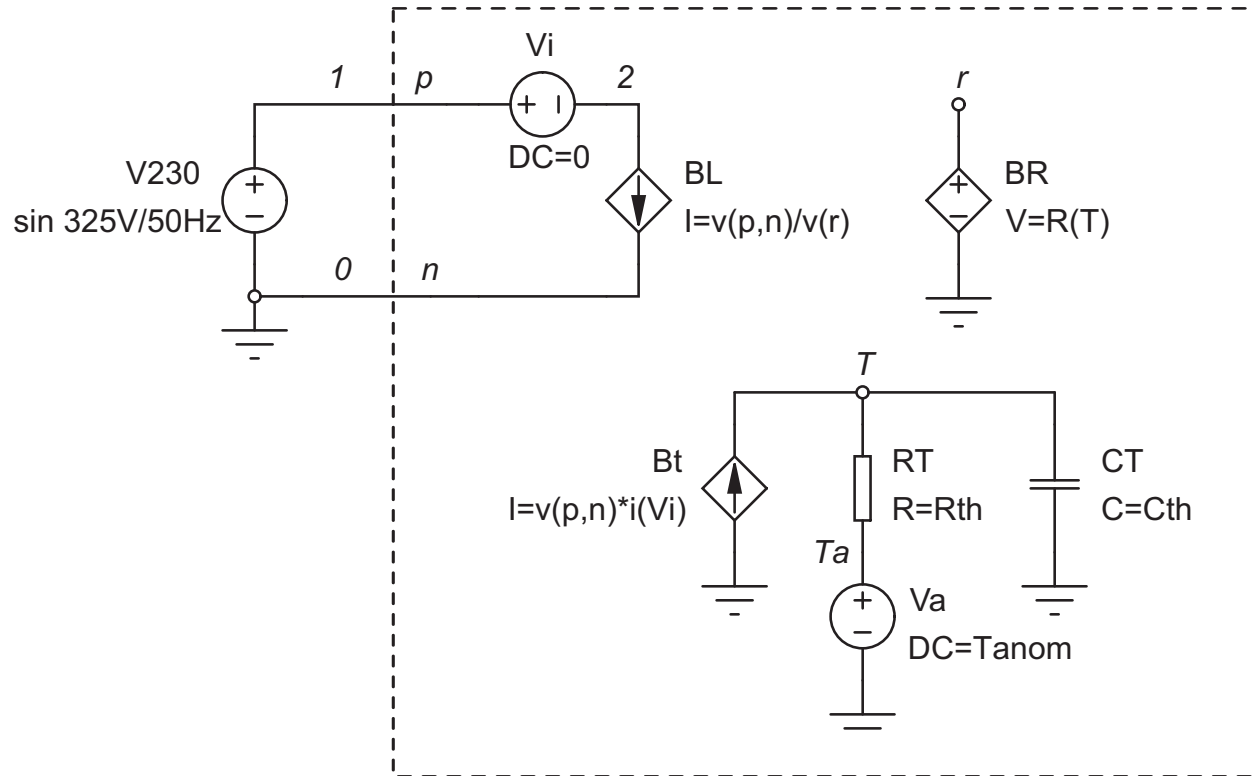
Integrirani MOS ojačevalnik



Linije, atenuatorji in podvezja



Modeliranje neelektričnih sistemov



$$U_{nom} = 230V$$

$$P_{nom} = 60W$$

$$T_{hnom} = 3000^{\circ}C$$

$$T_{anom} = 25^{\circ}C$$

$$C_{th} = 10mJ/K$$

$$R_{th} = (T_{hnom} - T_{anom}) / P_{nom}$$

$$R(T) = 8.612\Omega (p_0 + p_1 T + p_2 T^2)$$

$$p_0 = 4.45$$

$$p_1 = 0.0269 / ^{\circ}C$$

$$p_2 = 1.914e-6 / ^{\circ}C^2$$

$$C_T \frac{\partial T}{\partial t} + \frac{T - T_a}{R_{Th}} = u \cdot i$$