



JSM

IZDELAVA





UL FGG

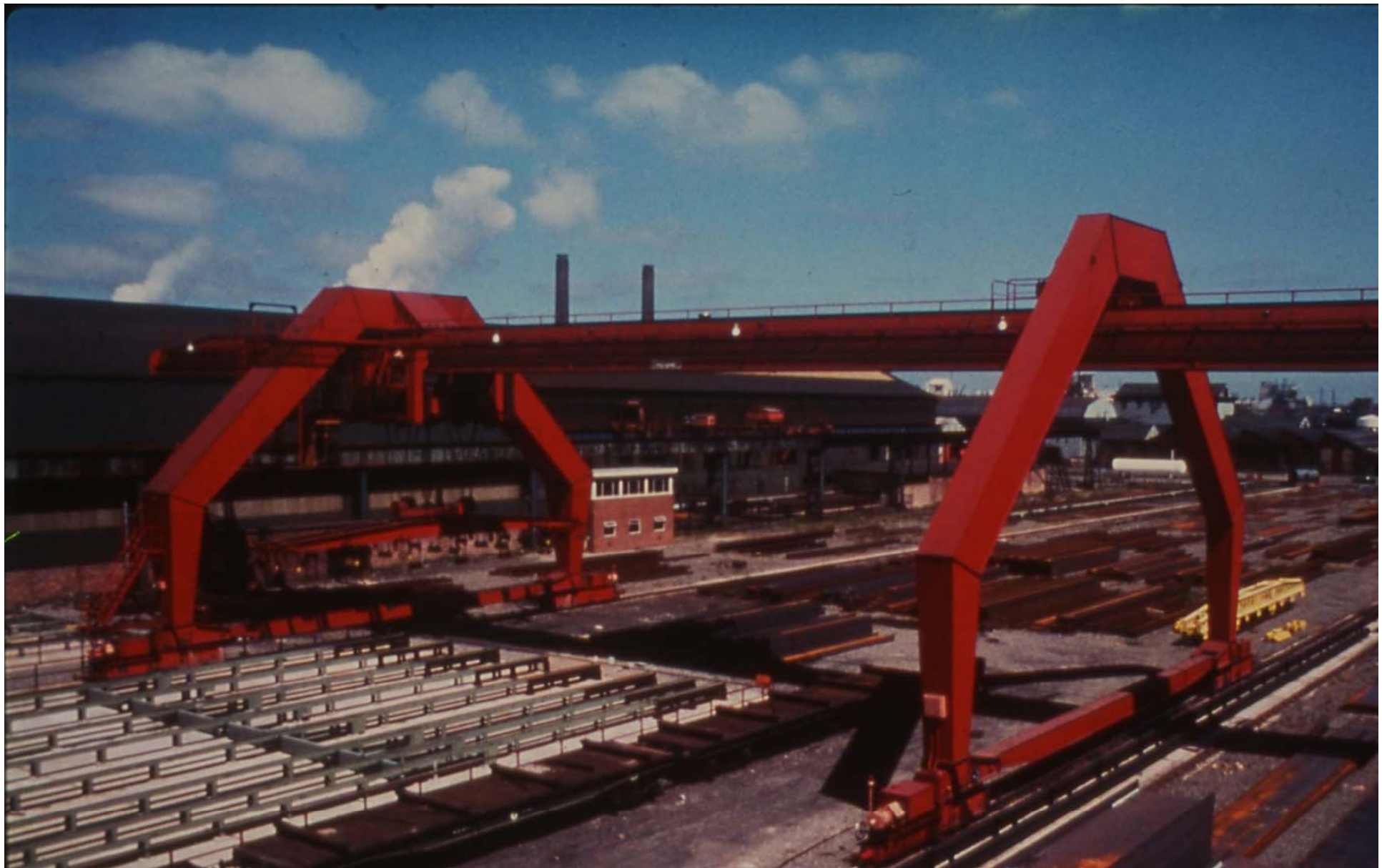
Katedra za metalne konstrukcije





UL FGG

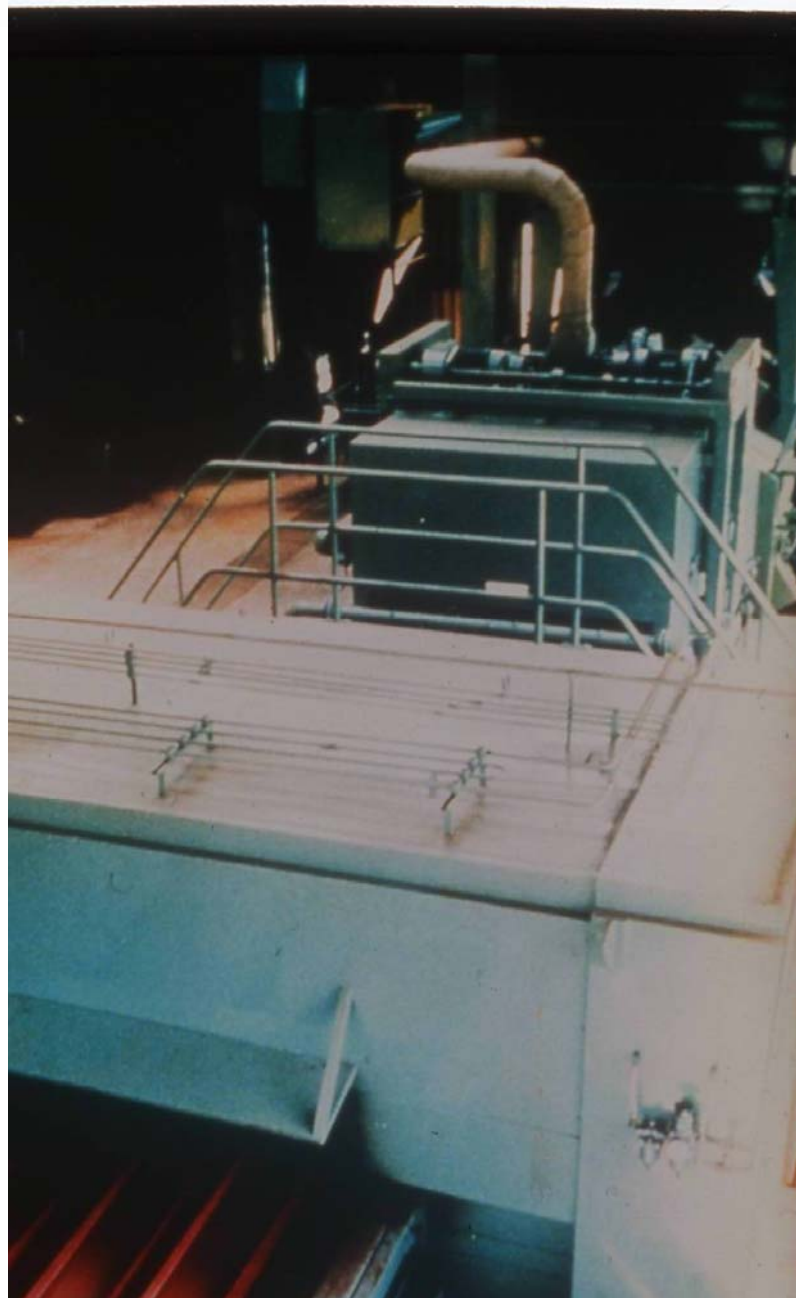
Katedra za metalne konstrukcije





UL FGG

Katedra za metalne konstrukcije





UL FGG

Katedra za metalne konstrukcije





UL FGG

Katedra za metalne konstrukcije





UL FGG

Katedra za metalne konstrukcije





UL FGG

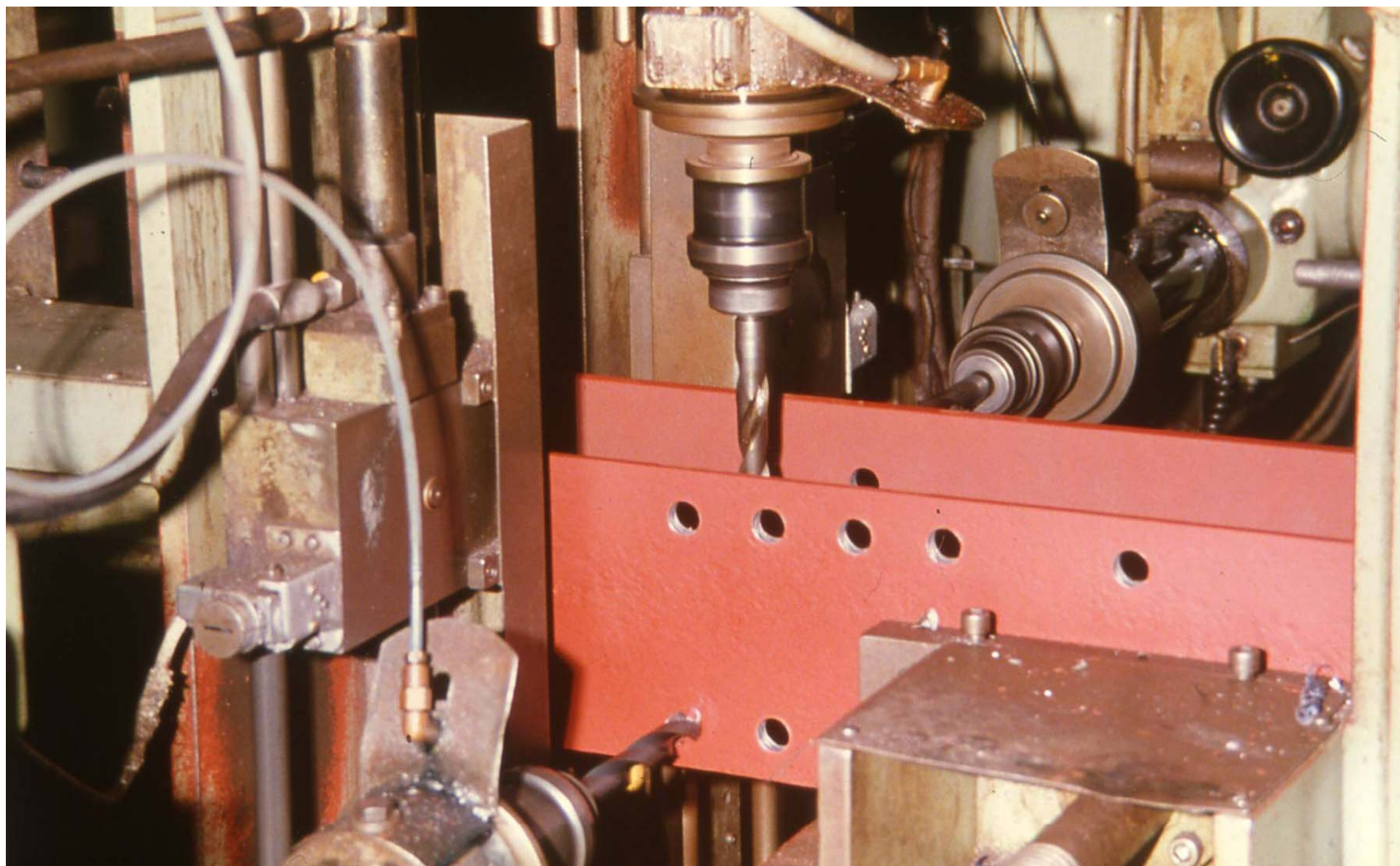
Katedra za metalne konstrukcije





UL FGG

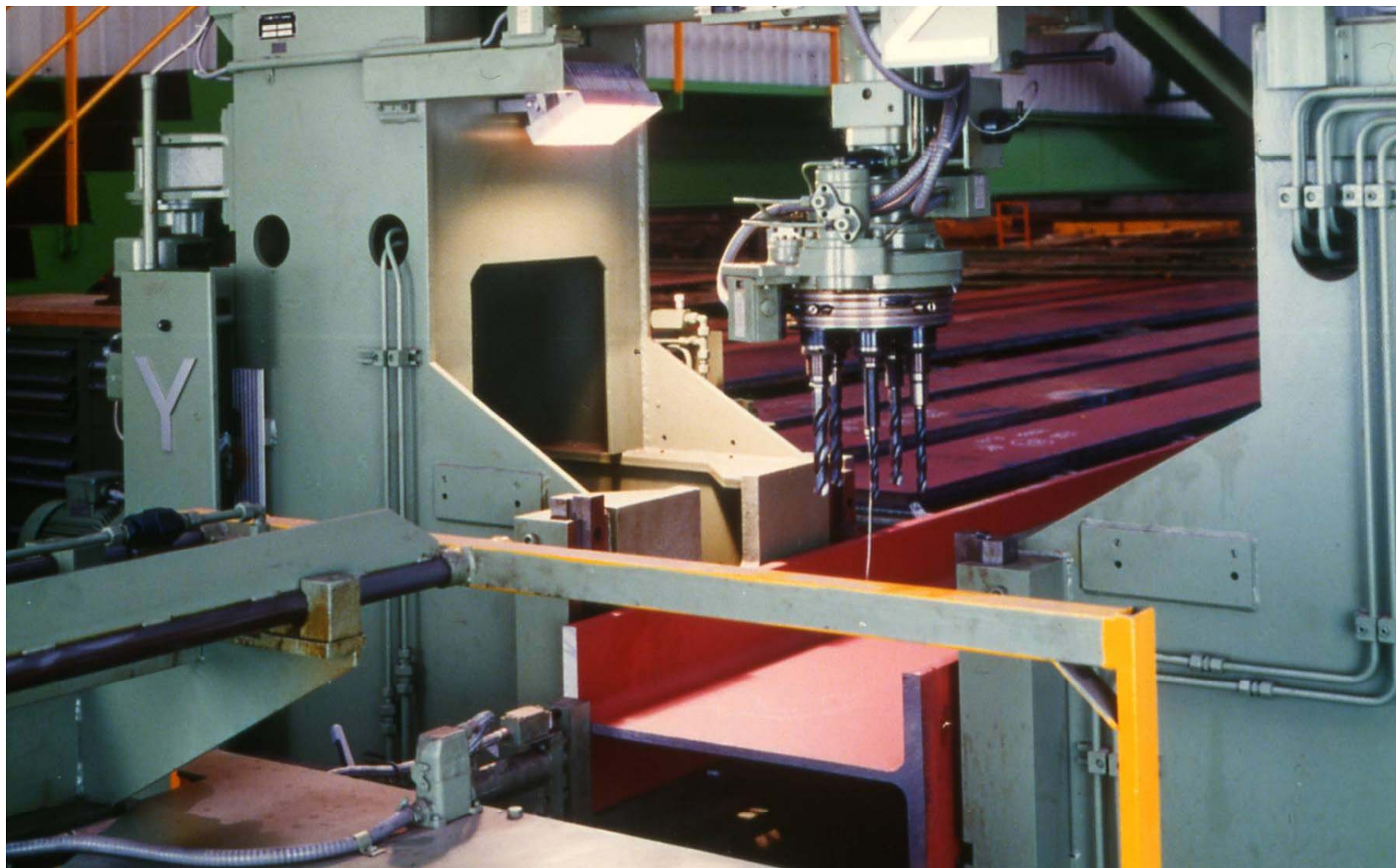
Katedra za metalne konstrukcije





UL FGG

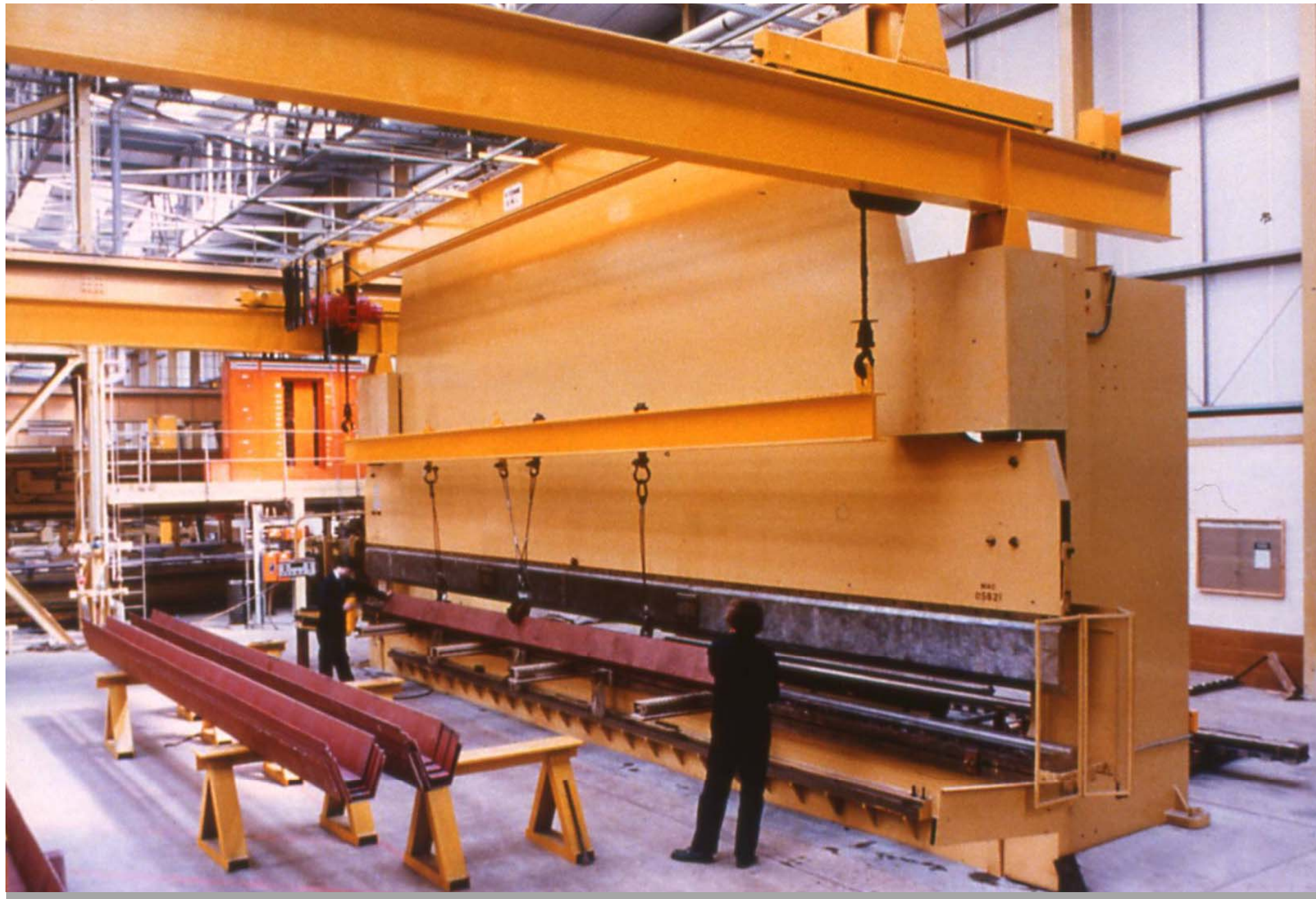
Katedra za metalne konstrukcije





UL FGG

Katedra za metalne konstrukcije

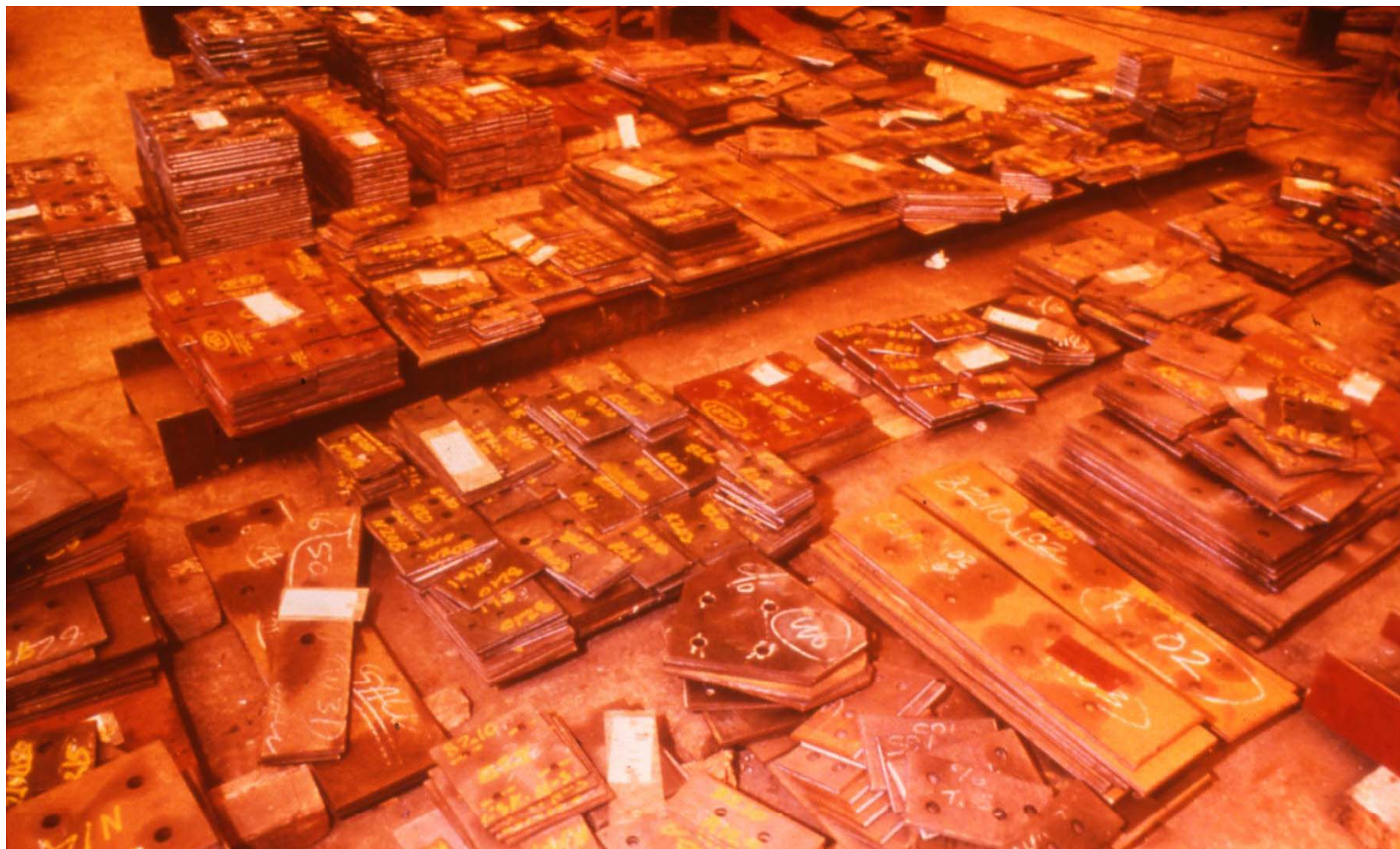




UL FGG

Katedra za metalne konstrukcije







UL FGG

Katedra za metalne konstrukcije





UL FGG

Katedra za metalne konstrukcije





UL FGG

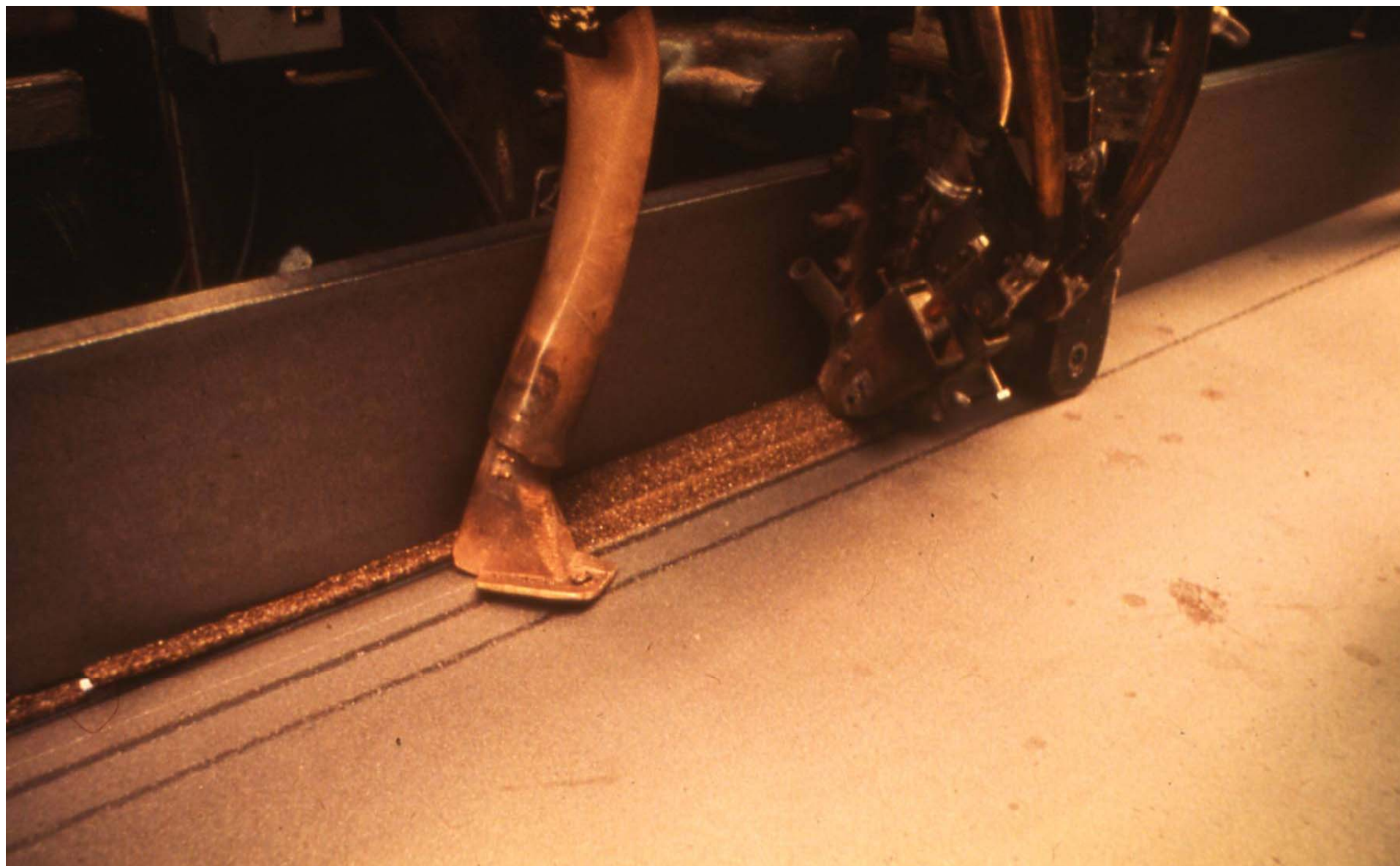
Katedra za metalne konstrukcije





UL FGG

Katedra za metalne konstrukcije





UL FGG

Katedra za metalne konstrukcije





UL FGG

Katedra za metalne konstrukcije





UL FGG

Katedra za metalne konstrukcije





UL FGG

Katedra za metalne konstrukcije





UL FGG

Katedra za metalne konstrukcije





UL FGG

Katedra za metalne konstrukcije





UL FGG

Katedra za metalne konstrukcije





UL FGG

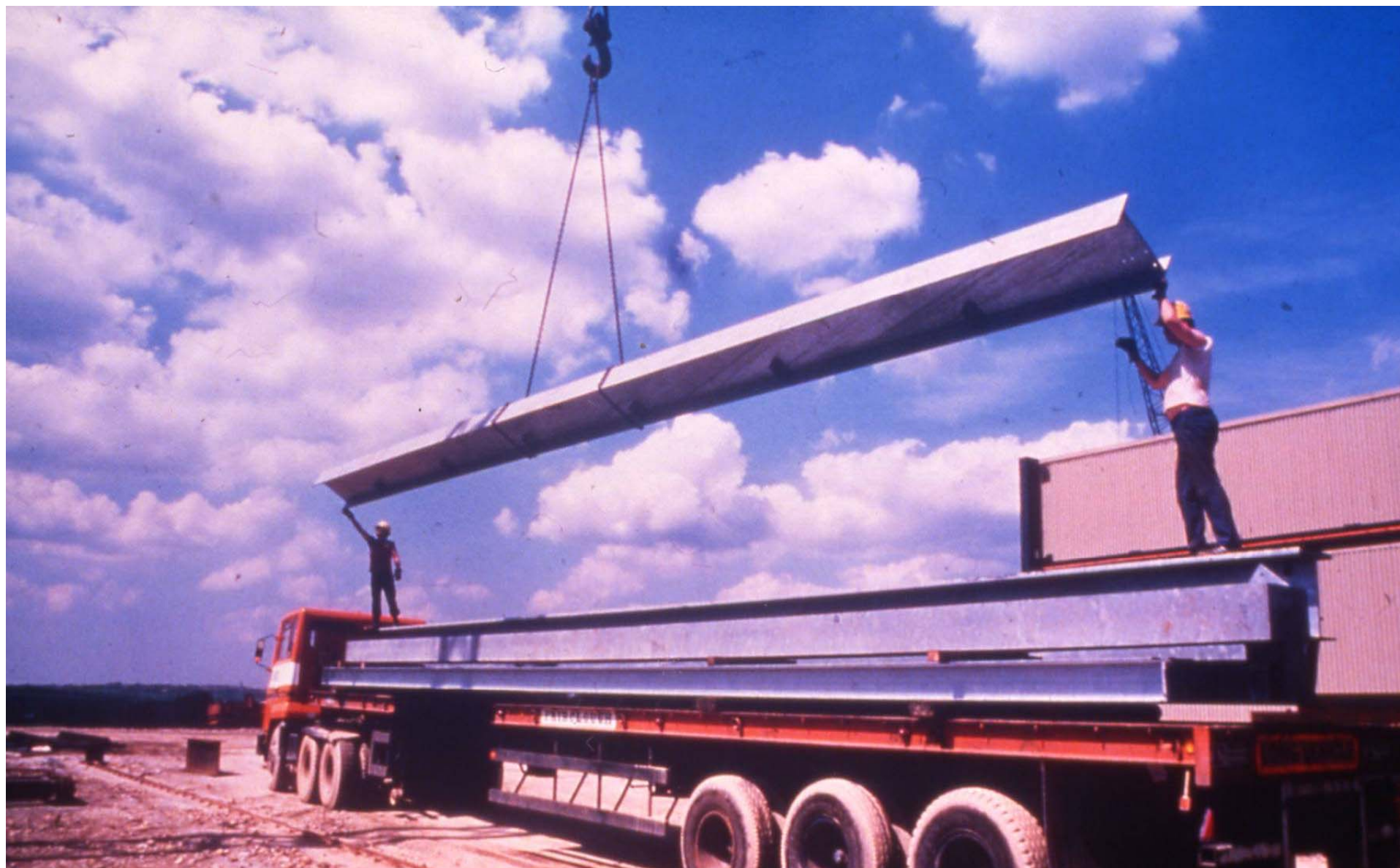
Katedra za metalne konstrukcije





UL FGG

Katedra za metalne konstrukcije

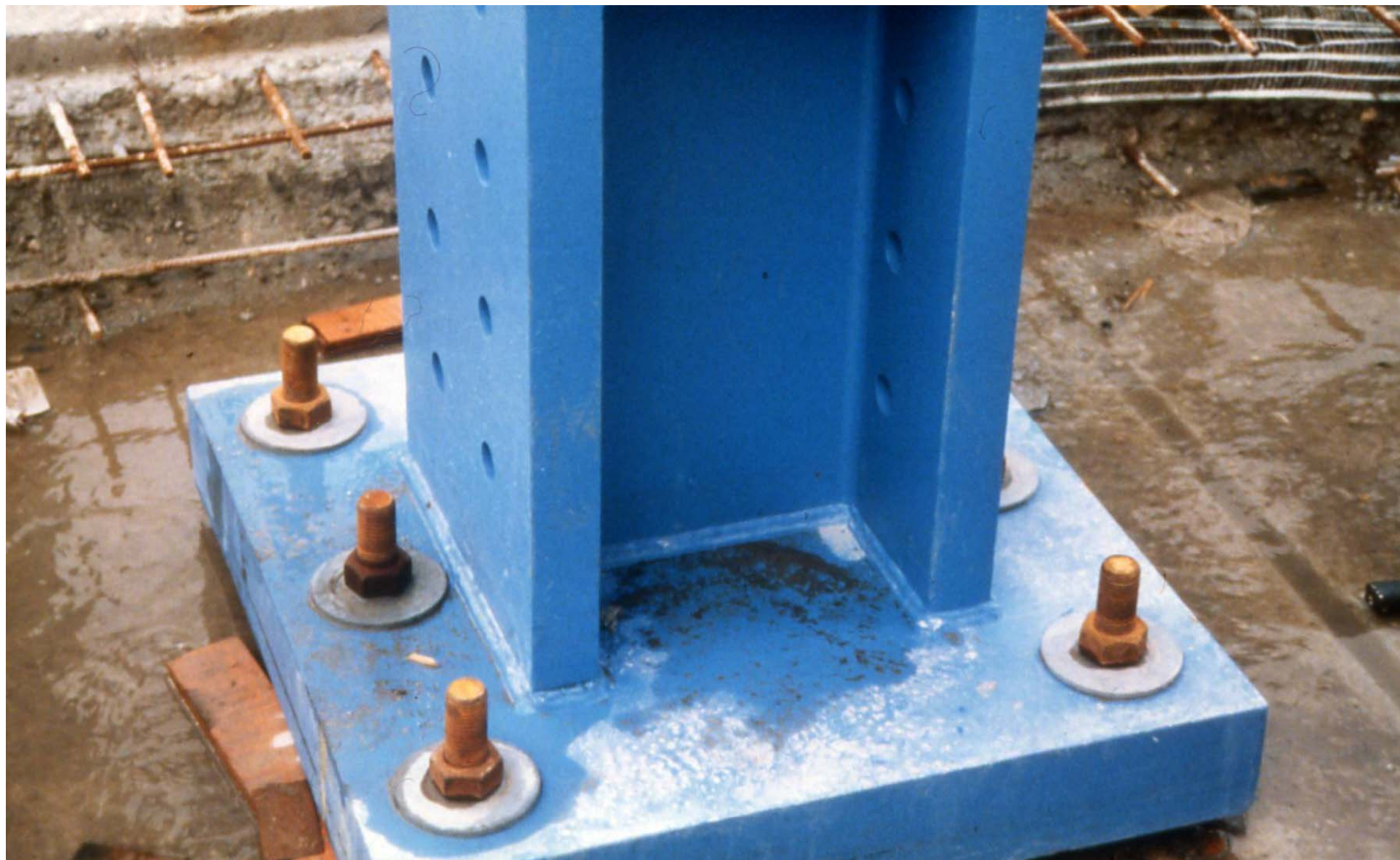






UL FGG

Katedra za metalne konstrukcije





UL FGG

Katedra za metalne konstrukcije





UL FGG

Katedra za metalne konstrukcije





UL FGG

Katedra za metalne konstrukcije





UL FGG

Katedra za metalne konstrukcije





UL FGG

Katedra za metalne konstrukcije





UL FGG

Katedra za metalne konstrukcije





UL FGG

Katedra za metalne konstrukcije





UL FGG

Katedra za metalne konstrukcije





UL FGG

Katedra za metalne konstrukcije





UL FGG

Katedra za metalne konstrukcije





UL FGG

Katedra za metalne konstrukcije





UL FGG

Katedra za metalne konstrukcije





UL FGG

Katedra za metalne konstrukcije

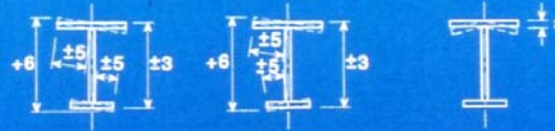




UL FGG

Katedra za metalne konstrukcije





Cross sections of built-up members



Deviation on length



Deviation on straightness



Deviation on web plates



Deviation on shape of built-up box section



Camber deviation

From mills: ± 12 maximum
 From specialist: $\pm 2,5$ Maximum

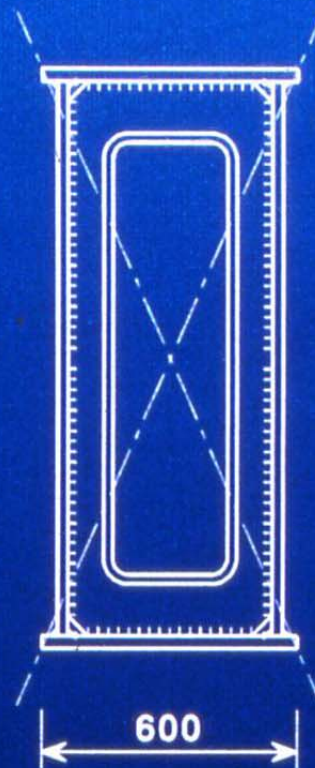
(All deviations in mm)

Tolerances of Details and Connections





(a)



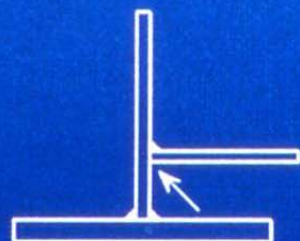
600

(b)

Fillet welds
inside are
not possible

Structures which Cannot be Made

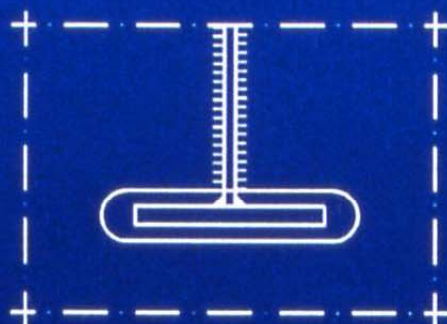




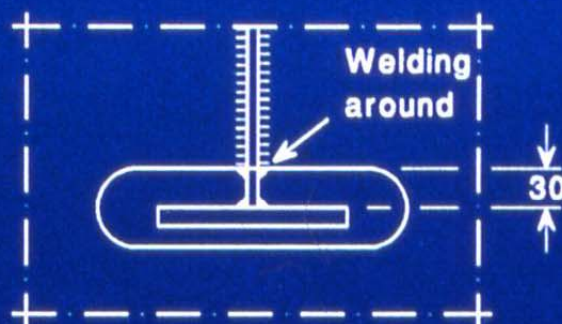
No backwelding possible



Right!



Not possible to weld around



Right!

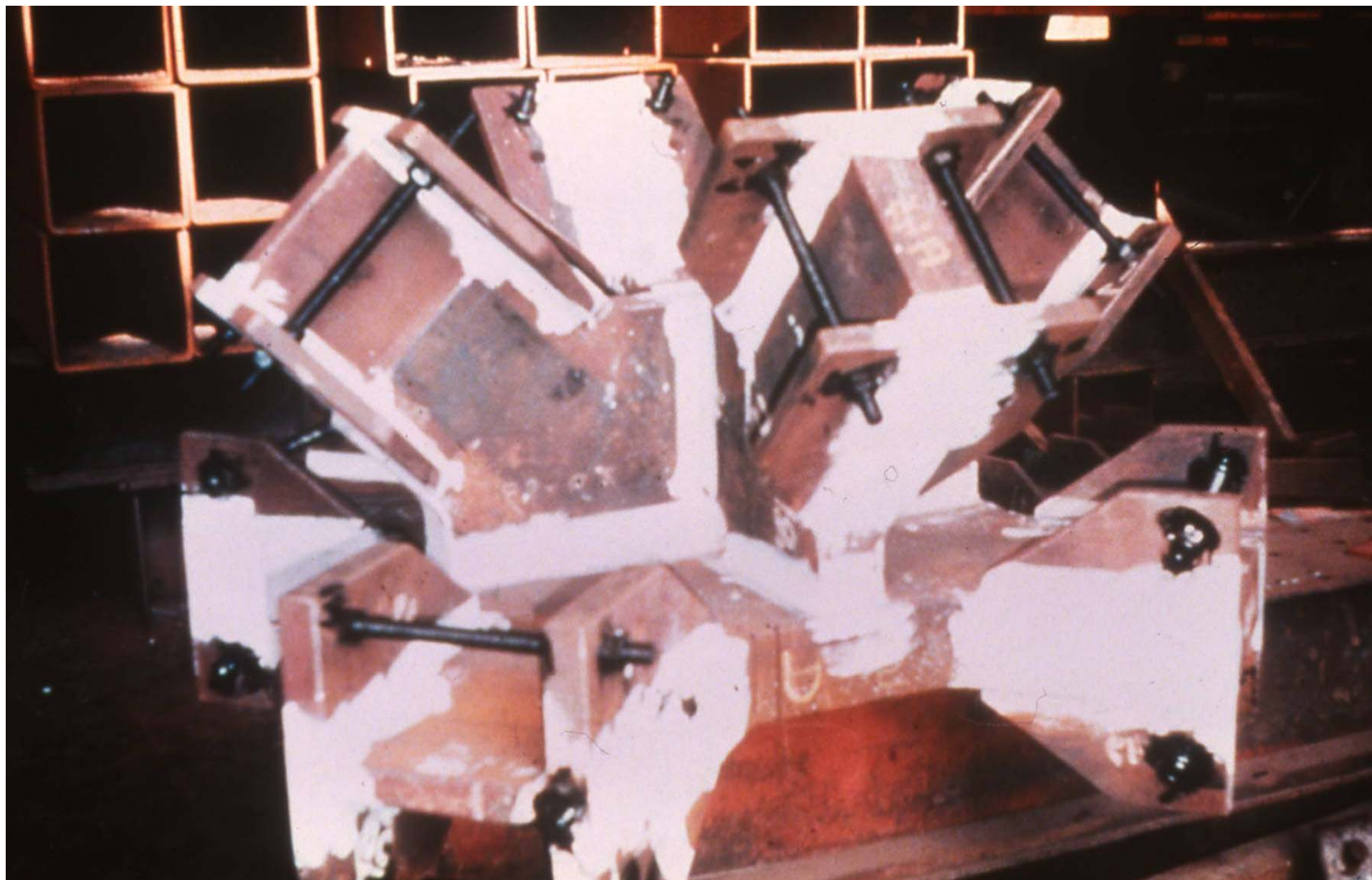
Accessibility for Welding





UL FGG

Katedra za metalne konstrukcije



TESSIDE WORKS
 PO Box 28 Redcar, Cleveland TS10 8RD
 Telephone 0642-474111 Telex 587401



Inspection
 Inspection
 Prüfung

ABNAHME PRÜFZEUGNIS

Order No. AB Customer Order No. A8
 No. de commande d'usine No. de commande de client A7
 Works order: 38 1769X / 1 Kundenauftrag: 542243
 Specification: E242 NF A36-801 1987 E24-2 B2
 Description: TEST CERTIFICATE & ANALYSIS
 Vorschritt: 2 COPIES OF TEST CERTIFICATE

Product: IPE 550 (550 X 210 X 106 KG/M) (106.00 Kg/M) MILL NO 10#1
 Roll No: ROLLING T 11

Result Satisfactory
 Essai de pliage satisfaisant
 Biegeversuche befriedigend

Item Mark Reperce de poste Postenmarke	Quantity Quantité Menge	Dimension Dimensions Masse Metres	Cast Number No de coulée Schmelzennr	Plate No Plaque Blech	C11 Yield Stress R _e N/mm ²	C12 Tensile Strength R _m N/mm ²	C13 Elong % L _{5.65} %	Charpy Impact ISO V C40 Resilience Charpy Charpy Kerbschlagzähigkeit C42 C43 Av	BASIC OXYGEN STEEL											
									ANALYSIS%					ANALYSE%			ANALYSE%			
									C71 C	C72 Si	C73 Mn	C74 P	C75 S	C76 N	C77	C78	C79	C80	C81	
			Specification	Min Max	235 340	340 460	28													
	4	23.100	7C2 1980	1758 20	308	417	37													
	4			1758 23																
	4			1758 24																
	4			1758 21	308	420	35													
	4			1758 23	308	438	31													
	1		7C2 1981	1758 28	384	408	40													

MANUFACTURERS
 MARK ST W 21

All Test Certificates issued by British Steel plc will contain this embossed seal. Any recipient of a copy of a British Steel plc Test Certificate without the seal should ensure from the supplier that it is a true and accurate reproduction of the original.
 These results are certified by British Steel plc and comply with the requirements of the Product Description.
 LAUT SCHREIBEN DES RW TÜV ESSEN
 VOM 1.12.77 WIRD AUF DIE
 GEGENZICHNUNG VERZICHTET

GENERAL MARK
 CHAMPION
 41-5042
 LYON
 /BLUE

Page No. 1 and last
 On behalf of British Steel plc
 TESSIDE WORKS
 Datum: 19/11/93
 Date:

A. Young