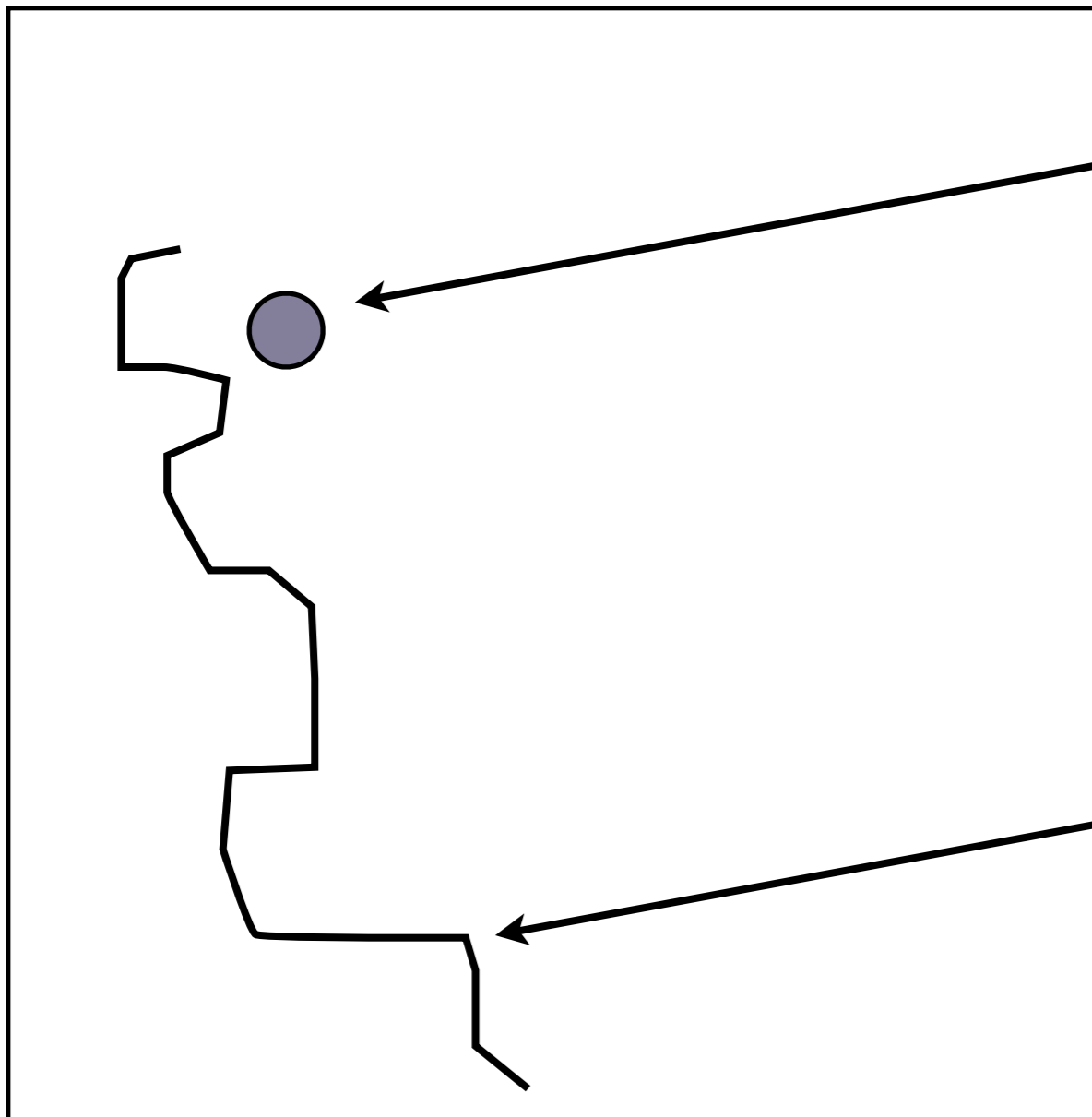


Prostorska in krajinska arheologija-Vaje 7

Locational component



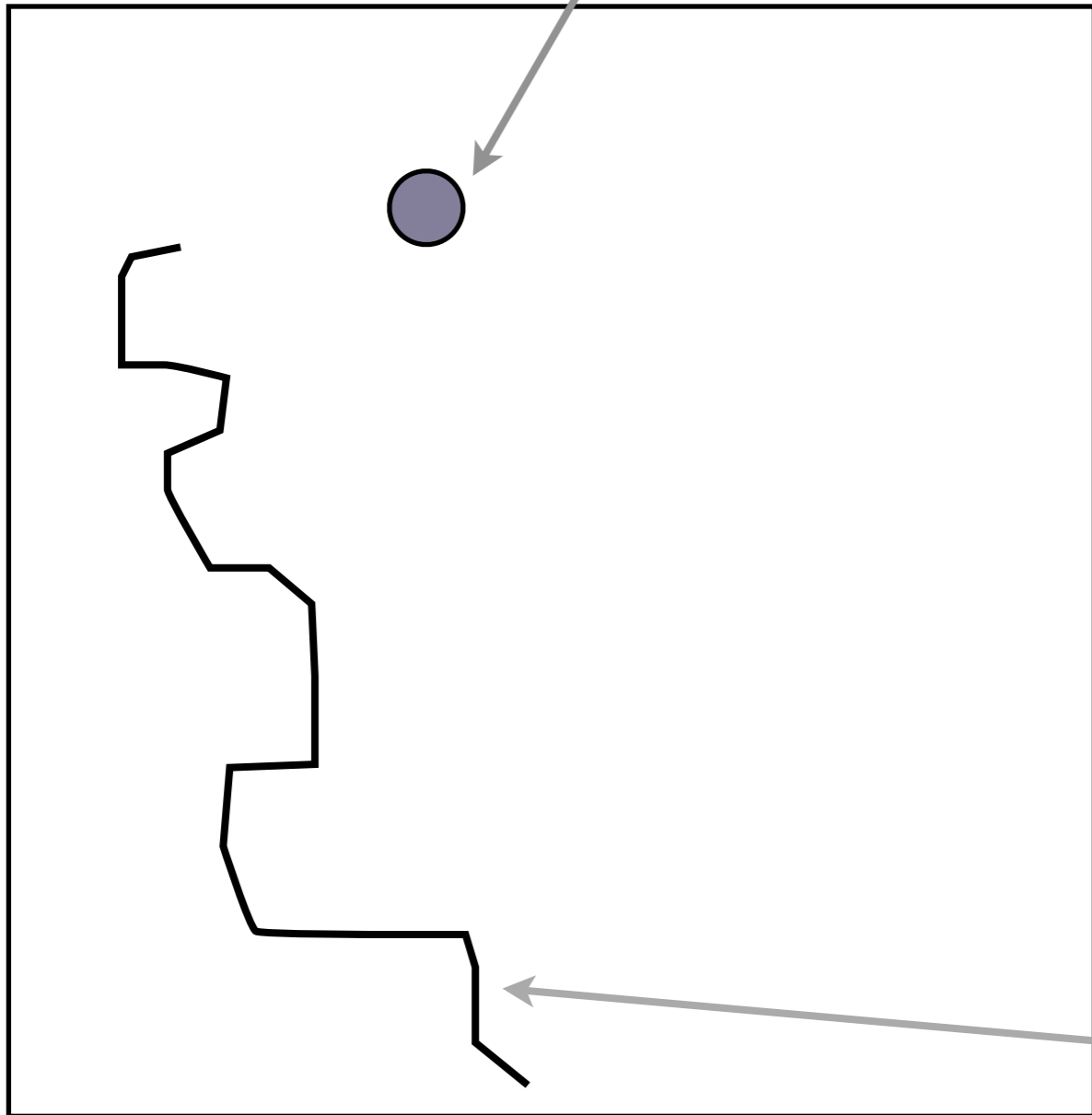
Point, 1201, 6234

Line,
1134, 6240,
1221, 6220,
1211, 6212
.....

Attribute component

id, type, date, name

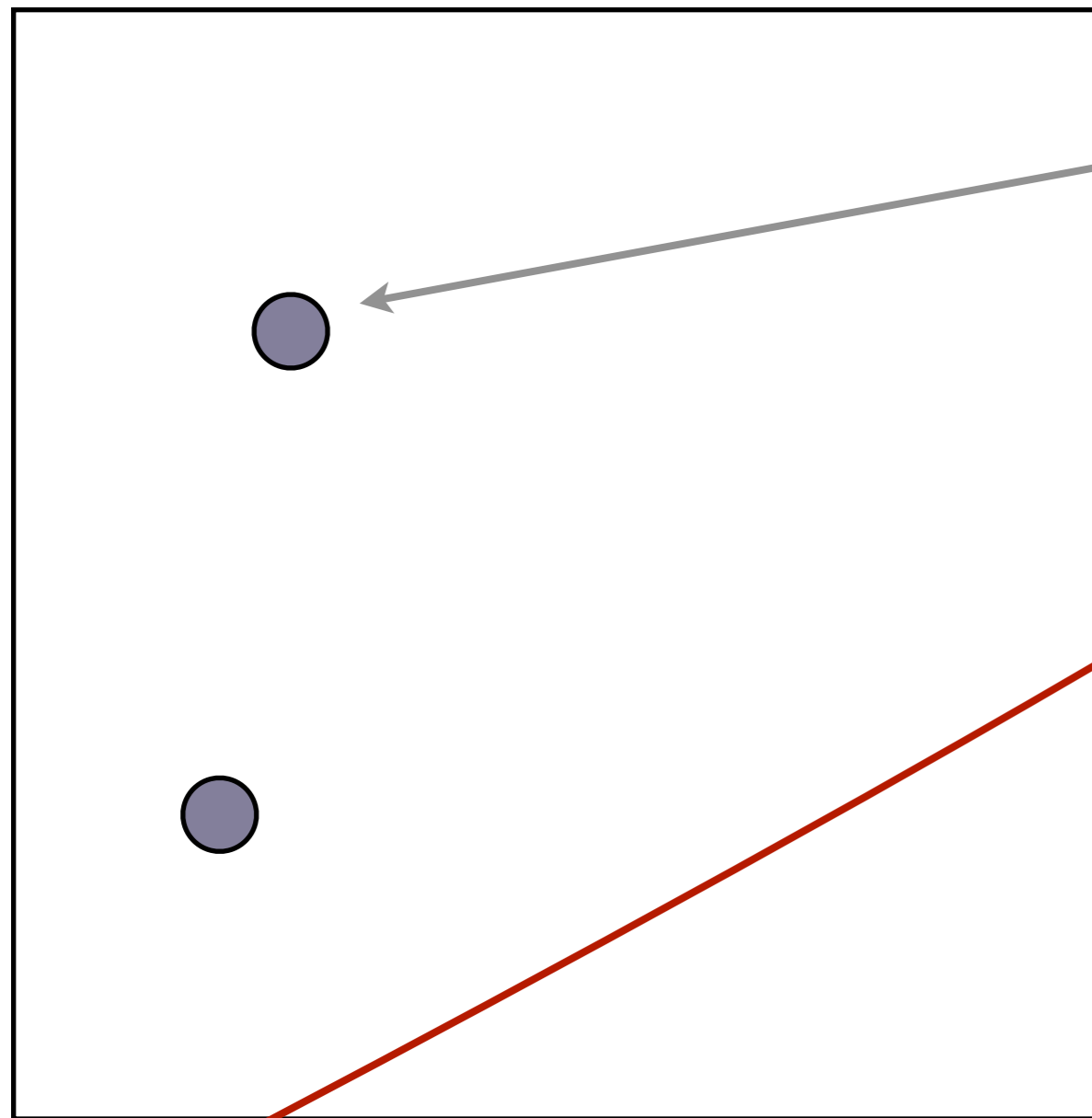
1, archaeological site, Roman, Ammaia



id, type, name

2, river, Rio Sever

Linking with external databases



id
1

id, name, type, no_amphorae, no_coarseware
1, Ammaia, 1256, 7654



- Layers
- 1499_00
 - 1498_00
 - 1497_00
 - 1496_00
 - 1495_00
 - 1494_00
 - 1493_00
 - 1492_00
 - 1491_00

Attribute table - 1499_00 :: 0 / 1982 feature(s) selected

	SIFKO	SIFDELKO	SIFVRAB	IMEVRAB	OZNVAB	RAZRED	POVRSINA
0	1499	1	0	NP	NP	0	1260
1	1499	1	0	NP	NP	0	10146
2	1499	1	0	NP	NP	0	24
3	1499	1	0	NP	NP	0	1135
4	1499	1	0	NP	NP	0	2518
5	1499	1	0	NP	NP	0	2414
6	1499	1	0	NP	NP	0	3435
7	1499	1	0	NP	NP	0	1219
8	1499	1	0	NP	NP	0	39
9	1499	1	0	NP	NP	0	7426
10	1499	1	0	NP	NP	0	2038
11	1499	1	0	NP	NP	0	2613
12	1499	1	0	NP	NP	0	3321
13	1499	1	0	NP	NP	0	4013
14	1499	1	0	NP	NP	0	1001
15	1499	1	0	NP	NP	0	2356
16	1499	1	0	NP	NP	0	2110
17	1499	1	0	NP	NP	0	4207
18	1499	1	0	NP	NP	0	3121
19	1499	1	0	NP	NP	0	3603
20	1499	1	0	NP	NP	0	9113
21	1499	1	0	NP	NP	0	1743
22	1499	1	0	NP	NP	0	3931

Look for in Search

Show selected only Search selected only Case sensitive

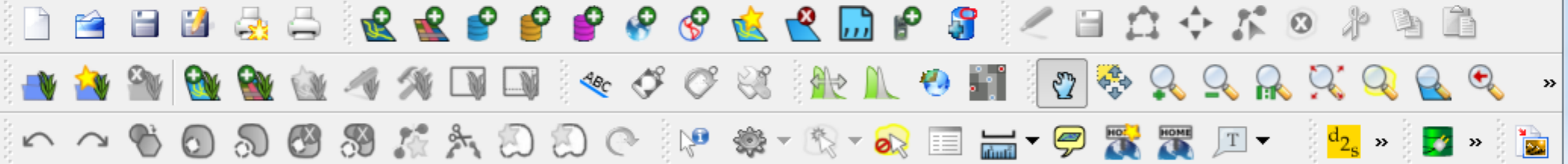
Atributna Tabela

Layer Properties - 1499_00

Style Labels Fields General Metadata Actions Joins Diagrams

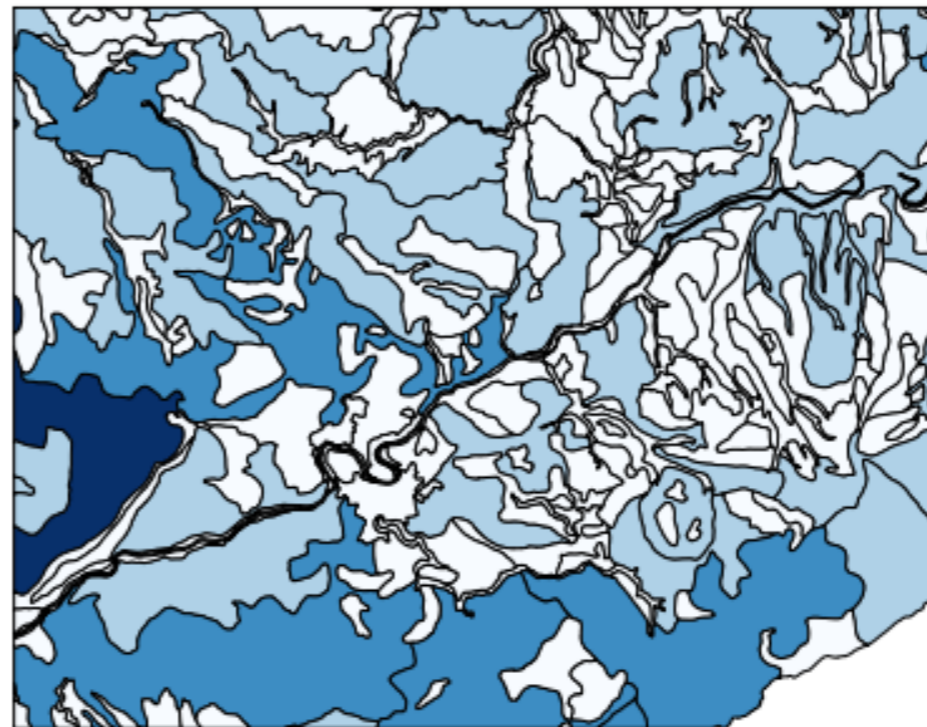
Id	Name	Type	Length	Precision	Comment	Edit widget	Alias
0	SIFKO	Integer	6	0		Line edit	
1	SIFDELKO	Integer	6	0		Line edit	
2	SIFVRAB	Integer	6	0		Line edit	
3	IMEVRAB	String	21	0		Line edit	
4	OZNVAB	String	10	0		Line edit	
5	RAZRED	Integer	6	0		Line edit	
6	POVRSINA	Real	11	0		Line edit	
7	STEV	Integer	6	0		Line edit	
8	PODD	Integer	6	0		Line edit	
9	VRSTAP	Integer	6	0		Line edit	
10	PARCELA	String	10	0		Line edit	
11	STA_STEV	Real	19	9		Line edit	

nt layer

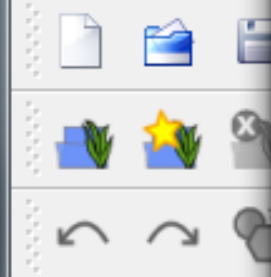


Layers

- dem
- dem
- PedokartografiskeEnote
- pedology



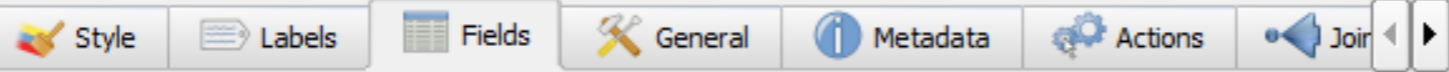
Control rendering order



Control rendering

Toggles the editing s...

Layer Properties - pedology



Id	Name	Type	Length	Precision	Comment	Edit widget	Alias
0	AREA	Real	18	6		Line edit	
1	PERIMETER	Real	18	6		Line edit	
2	PK25SLO_2_	Real	18	6		Line edit	
3	PK25SLO_21	Real	18	6		Line edit	
4	PKE	Real	18	6		Line edit	
5	HA	Real	18	6		Line edit	
6	ID	Integer	5	0		Line edit	





Layers

- dem
- dem
- PedokartografskeEnote
- pedology

Attribute table - PedokartografskeEnote :: 0 / 1861 feature(s) selected

	PKE	PKET	PSE1	PSE1T	PROCENT1	PSE2	PSE2T
0	0	NULL	0	NULL	0	0	NULL
1	1	LITOSOL,KARB....	1	LITOSOL,KARB....	100	0	NULL
2	2	LITOSOL,KARB....	2	LITOSOL,KARB....	100	0	NULL
3	3	LITOSOL,KARB....	3	LITOSOL,KARB....	100	0	NULL
4	4	LITOSOL,KARB....	4	LITOSOL,KARB....	100	0	NULL
5	5	LITOSOL,EVT./B...	5	LITOSOL,EVT./B...	100	0	NULL
6	6	LITOSOL,EVT./...	6	LITOSOL,EVT./...	100	0	NULL
7	7	LITOSOL,EVT./P...	7	LITOSOL,EVT./P...	100	0	NULL
8	8	LITOSOL,EVT./...	8	LITOSOL,EVT./...	100	0	NULL
9	9	LITOSOL,DIS./KI...	9	LITOSOL,DIS./KI...	100	0	NULL
10	10	LITOSOL,DIS./P...	10	LITOSOL,DIS./P...	100	0	NULL
11	11	LITOSOL,DIS./O...	11	LITOSOL,DIS./O...	100	0	NULL
12	12	REGOSOL,KARB...	12	REGOSOL,KARB...	100	0	NULL
13	13	REGOSOL,KARB...	13	REGOSOL,KARB...	100	0	NULL
14	14	REGOSOL,EVT./...	14	REGOSOL,EVT./...	100	0	NULL
15	15	REGOSOL,EVT./...	15	REGOSOL,EVT./...	100	0	NULL
16	16	REGOSOL,DIS./...	16	REGOSOL,DIS./...	100	0	NULL
17	17	REGOSOL,DIS./...	17	REGOSOL,DIS./...	100	0	NULL
18	18	REGOSOL,DIS./...	18	REGOSOL,DIS./...	100	0	NULL
19	19	REGOSOL,DIS./...	19	REGOSOL,DIS./...	100	0	NULL
20	20	KOLUVIALNO-...	20	KOLUVIALNO-...	100	0	NULL
21	21	KOLUVIALNO-...	21	KOLUVIALNO-...	100	0	NULL
22	22	KOLUVIALNO-...	22	KOLUVIALNO-...	100	0	NULL

Control rendering order

Look for in Search

Show selected only Search selected only Case sensitive

Layer Properties - PedokartografskeEnote

Style | Labels | Fields | General | Metadata | Actions | Join

Id | Name | Type | Length | Precision | Comment | Edit widget | Alias

Id	Name	Type	Length	Precision	Comment	Edit widget	Alias
0	PKE	Integer	5	0		Line edit	
1	PKET	String	120	0		Line edit	
2	PSE1	Integer	3	0		Line edit	
3	PSE1T	String	50	0		Line edit	
4	PROCENT1	Integer	3	0		Line edit	
5	PSE2	Integer	3	0		Line edit	
6	PSE2T	String	50	0		Line edit	
7	PROCENT2	Integer	2	0		Line edit	
8	PSE3	Integer	3	0		Line edit	
9	PSE3T	String	50	0		Line edit	
10	PROCENT3	Integer	2	0		Line edit	
11	INKLUZIJE	Integer	3	0		Line edit	
12	FAO	String	3	0		Line edit	

Restore Default Style | Save As Default | Load Style ... | Save Style ...

OK | Cancel | Apply | Help

File Edit View

dem dem Pedokarto pedolo

Control rendering

Toggles the editing st

Map navigation tools: pan, zoom, home, etc.



1:250864 | Render | EPSG:3794

Layer Properties - pedology

- Style
- Labels
- Fields
- General
- Metadata
- Actions
- Joins

Join layer	Join field	Target field

Add vector join

Join layer: PedokartografskeEnote

Join field: PKE

Target field: ID

Cache join layer in virtual memory

Create attribute index on join field

OK Cancel

- Restore Default Style
- Save As Default
- Load Style

- OK
- Cancel
- Apply
- Help

Control rendering

Toggles the editing state

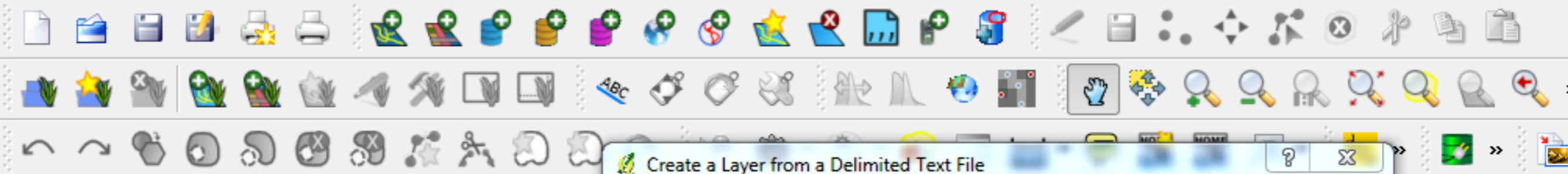
CSV, Comma Separated Values

Id,X,Y,Ime

1,522081,82098,Bršljin

2,524801,81010,Mehovo

3,52112,82456,Drgančevje



Layers

Control rendering order

Create a Layer from a Delimited Text File

File Name:

Layer name:

Selected delimiters Tab Space
 Comma Semicolon Colon

Plain characters

Regular expression

Start import at row:

X Y fields X field: Y field:

WKT field:

Decimal point:

Sample text

	Id	X	Y	Ime
1	1	522081	82098	Br_ljin
2	2	524801	81010	Mehovo
3	3	52112	82456	Drgan_evje

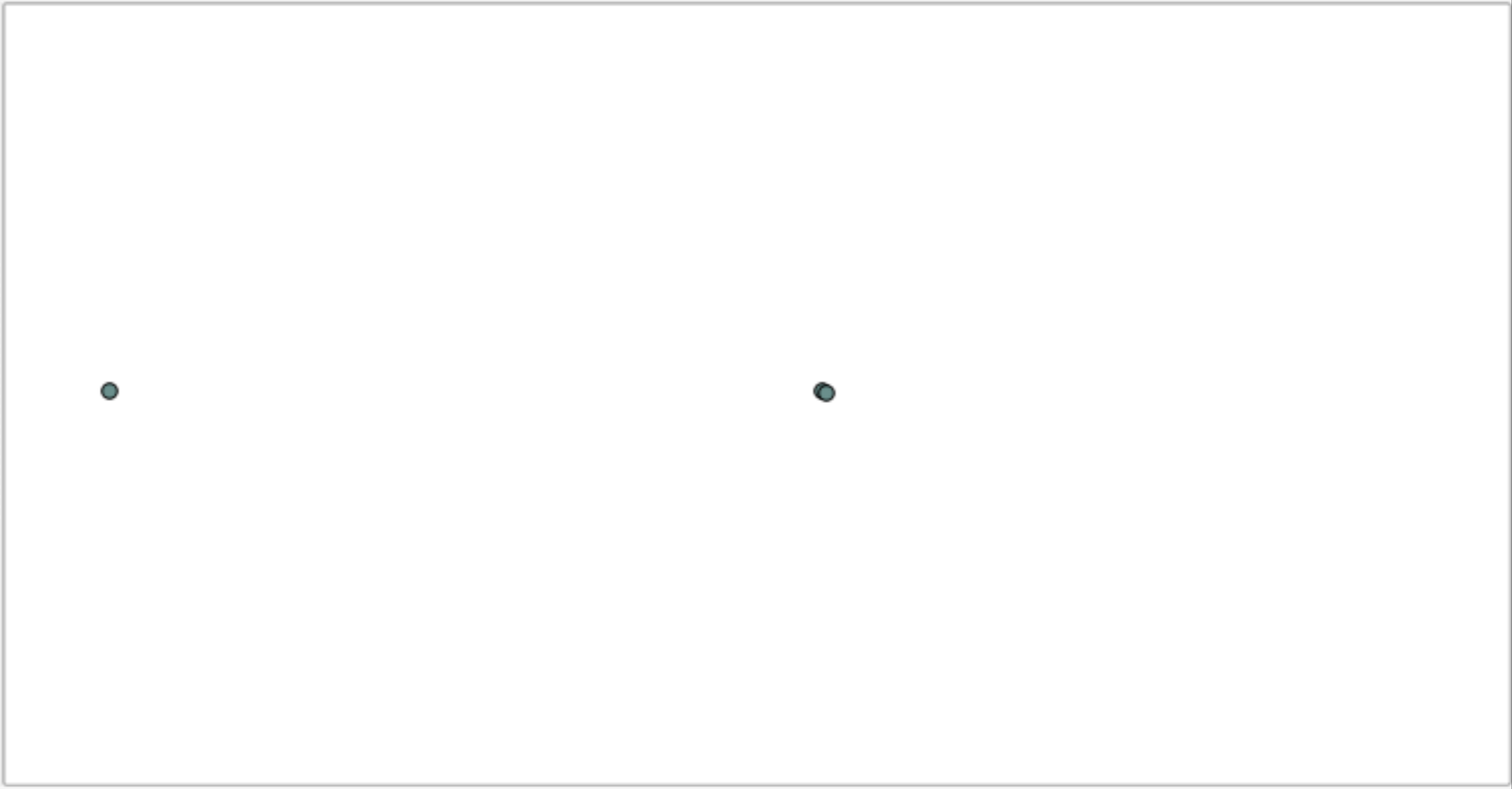
File Edit View Layer Settings Plugins Vector Raster Database Web Help



Layers

- test

Control rendering order



Povezave z novo podatkovno zbirko



Datoteka

Osnovno

Vstavljanje

Postavitev strani

Formule

Podatki

Pregled

Ogled

Calibri 11 A A

K *L* P | [Grid] [Color] [Font Color]

Odložišče Pisava Poravnava Število

Splošno % 000

Pogojno oblikovanje Oblikuj kot tabelo Slogi celic

Vstavi Izbrisi Oblika

Razvrsti in filtriraj Poišči in izberi

Urejanje

A1

f_x PARCELA

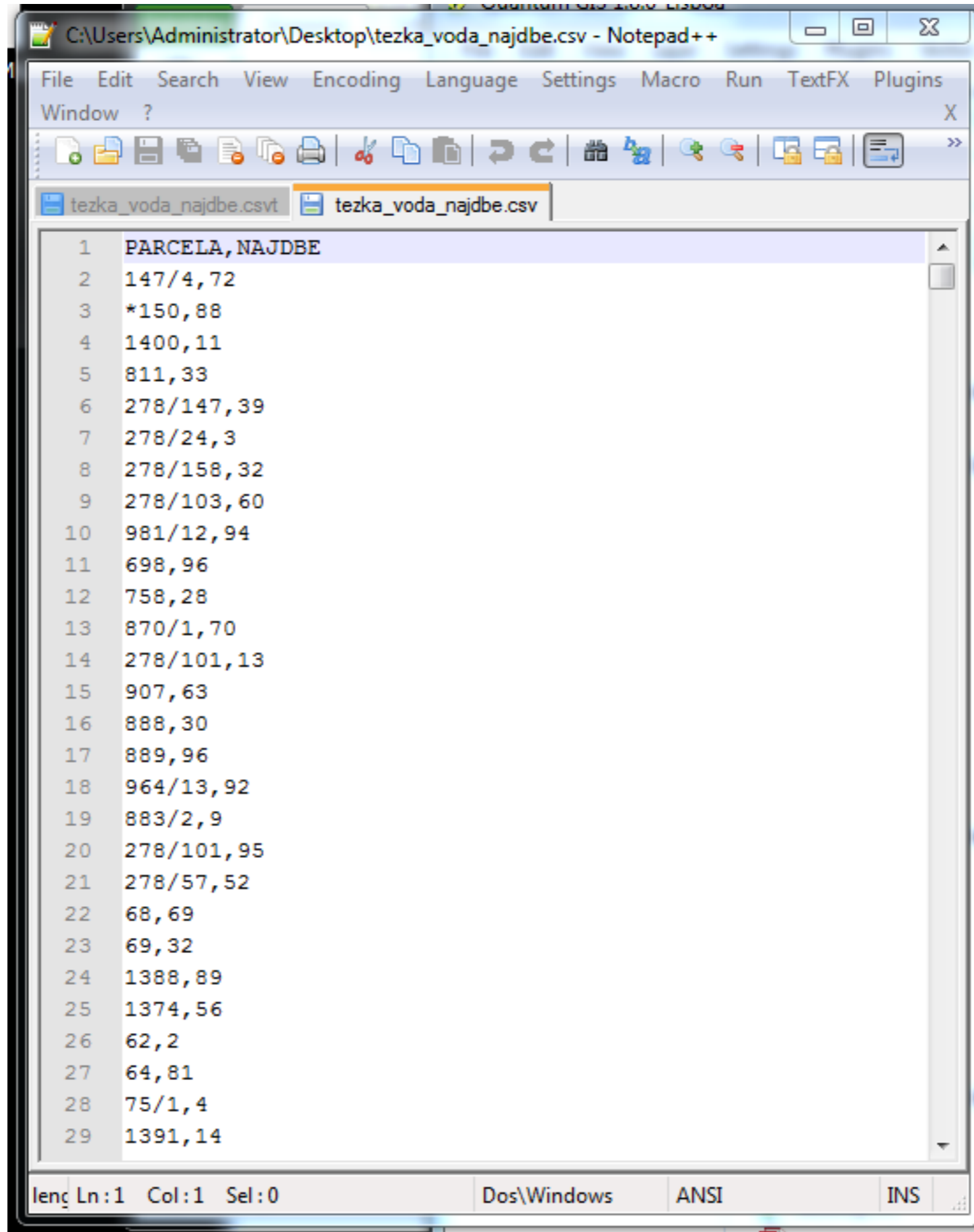
	A	B	C	D	E	F	G	H	I	J	K	L	M	N
1	PARCELA	NAJDBE												
2	147/4	72												
3	*150	88												
4	1400	11												
5	811	33												
6	278/147	39												
7	278/24	3												
8	278/158	32												
9	278/103	60												
10	981/12	94												
11	698	96												
12	758	28												
13	870/1	70												
14	278/101	13												
15	907	63												
16	888	30												
17	889	96												
18	964/13	92												
19	883/2	9												
20	278/101	95												
21	278/57	52												
22	68	69												
23	69	32												

tezka_voda_najdbe

Pripravljen

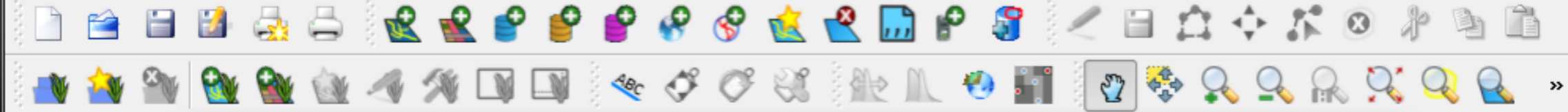
100 %

Excel -> CSV, Comma Separated Values



The image shows a Notepad++ window titled "C:\Users\Administrator\Desktop\tezka_voda_najdbe.csv - Notepad++". The window contains a CSV file with 29 rows of data. The first row is the header "PARCELA, NAJDBE". The subsequent rows contain numerical values separated by commas, representing parcel data. The status bar at the bottom indicates "lenç Ln:1 Col:1 Sel:0", "Dos\Windows", "ANSI", and "INS".

Line	Value
1	PARCELA, NAJDBE
2	147/4,72
3	*150,88
4	1400,11
5	811,33
6	278/147,39
7	278/24,3
8	278/158,32
9	278/103,60
10	981/12,94
11	698,96
12	758,28
13	870/1,70
14	278/101,13
15	907,63
16	888,30
17	889,96
18	964/13,92
19	883/2,9
20	278/101,95
21	278/57,52
22	68,69
23	69,32
24	1388,89
25	1374,56
26	62,2
27	64,81
28	75/1,4
29	1391,14



Attribute table - tezka_voda_najdbe :: 0 / 2280 feature(s) selected

	PARCELA	NAJDBE
0	147/4	72
1	*150	88
2	1400	11
3	811	33
4	278/147	39
5	278/24	3
6	278/158	32
7	278/103	60
8	981/12	94
9	698	96
10	758	28
11	870/1	70
12	278/101	13
13	907	63
14	888	30
15	889	96
16	964/13	92
17	883/2	9
18	278/101	95
19	278/57	52
20	68	69
21	69	32
22	1388	89
23	1374	56

Show selected only
 Search selected only
 Case sensitive
 Look for in Search

Control rendering of

Layer Properties - tezka_voda_najdbe

Style Labels Fields General Metadata Actions Join

Id	Name	Type	Length	Precision	Comment	Edit widget	Alias
0	PARCELA	String	0	0		Line edit	
1	NAJDBE	Integer	0	0		Line edit	



Restore Default Style Save As Default Load Style ... Save Style ...

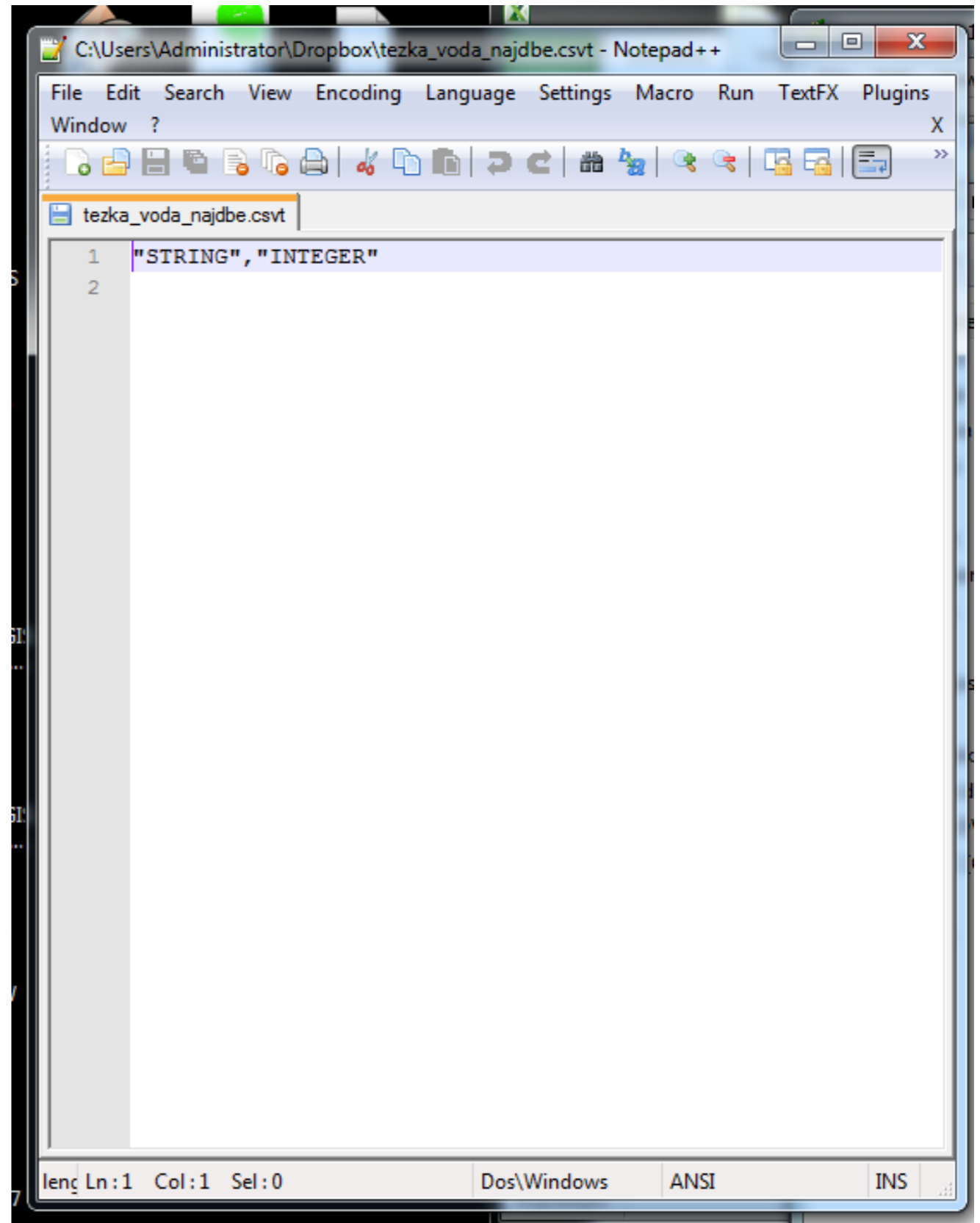
OK Cancel Apply Help

Control rendering order

CSV, CSV Template

tezka_voda_najdbe.csv

tezka_voda_najdbe.csvt



```
1 "STRING", "INTEGER"  
2
```

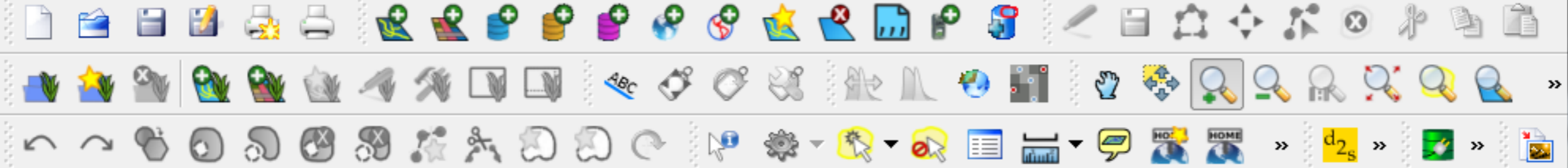
lenç Ln: 1 Col: 1 Sel: 0 Dos\Windows ANSI INS

tezka_voda_najdbe.csv

tezka_voda_najdbe.csvt

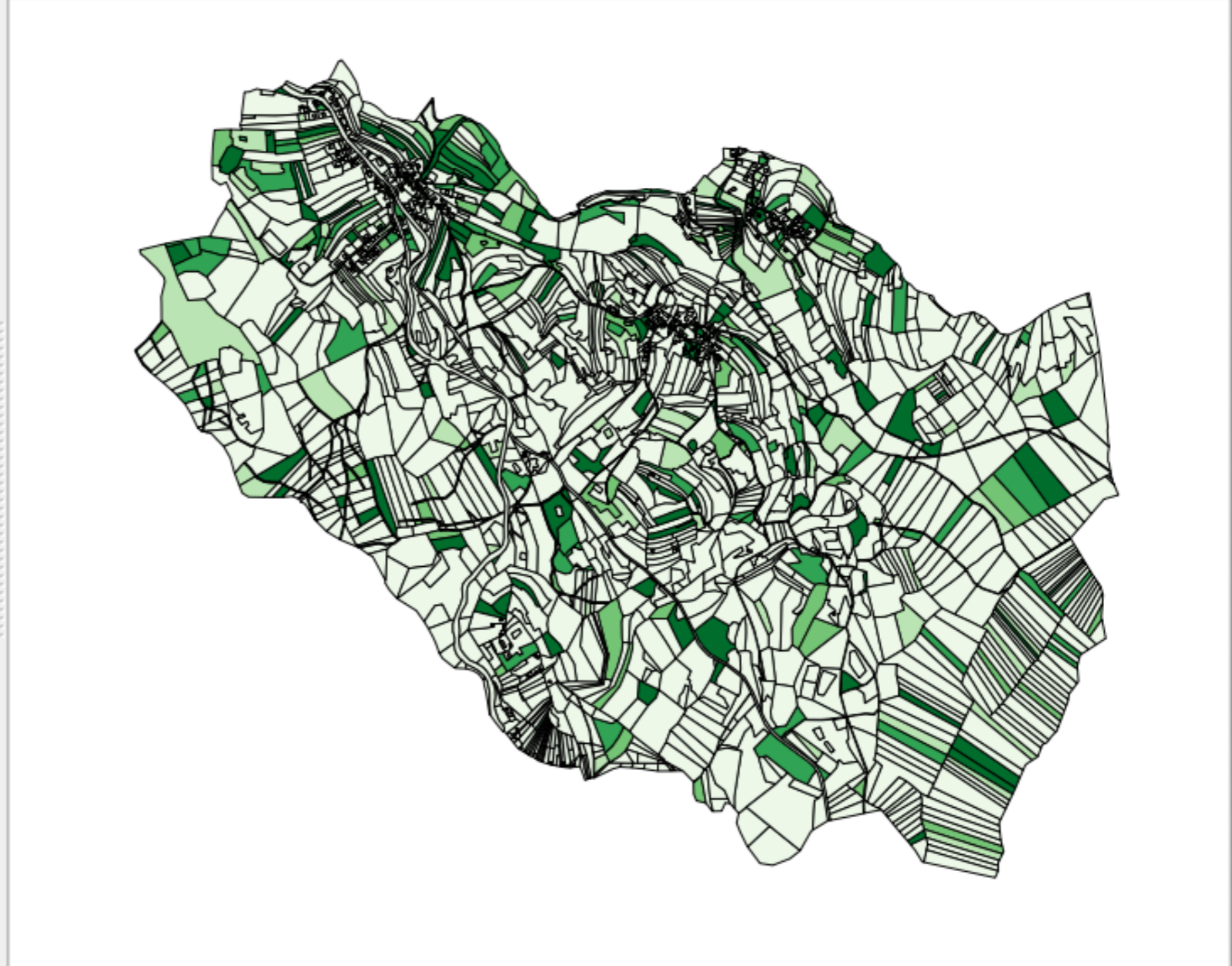
```
C:\Users\Administrator\Desktop\tezka_voda_najdbe.csv - Notepad+
File Edit Search View Encoding Language Settings Macro
Window ?
tezka_voda_najdbe.csvt tezka_voda_najdbe.csv
1 PARCELA,NAJDBE
2 147/4,72
3 *150,88
4 1400,11
5 811,33
6 278/147,39
7 278/24,3
8 278/158,32
9 278/103,60
10 981/12,94
11 698,96
12 758,28
13 870/1,70
14 278/101,13
15 907,63
16 888,30
17 889,96
18 964/13,92
19 883/2,9
20 278/101,95
21 278/57,52
22 68,69
23 69,32
24 1388,89
25 1374,56
26 62,2
27 64,81
28 75/1,4
29 1391,14
lenc Ln:1 Col:1 Sel:0 Dos\Windows AN
```

```
C:\Users\Administrator\Dropbox\tezka_voda_najdbe.csvt - Notepad++
File Edit Search View Encoding Language Settings Macro Run TextFX Plugins
Window ?
tezka_voda_najdbe.csvt
1 "STRING","INTEGER"
2
lenc Ln:1 Col:1 Sel:0 Dos\Windows ANSI INS
```



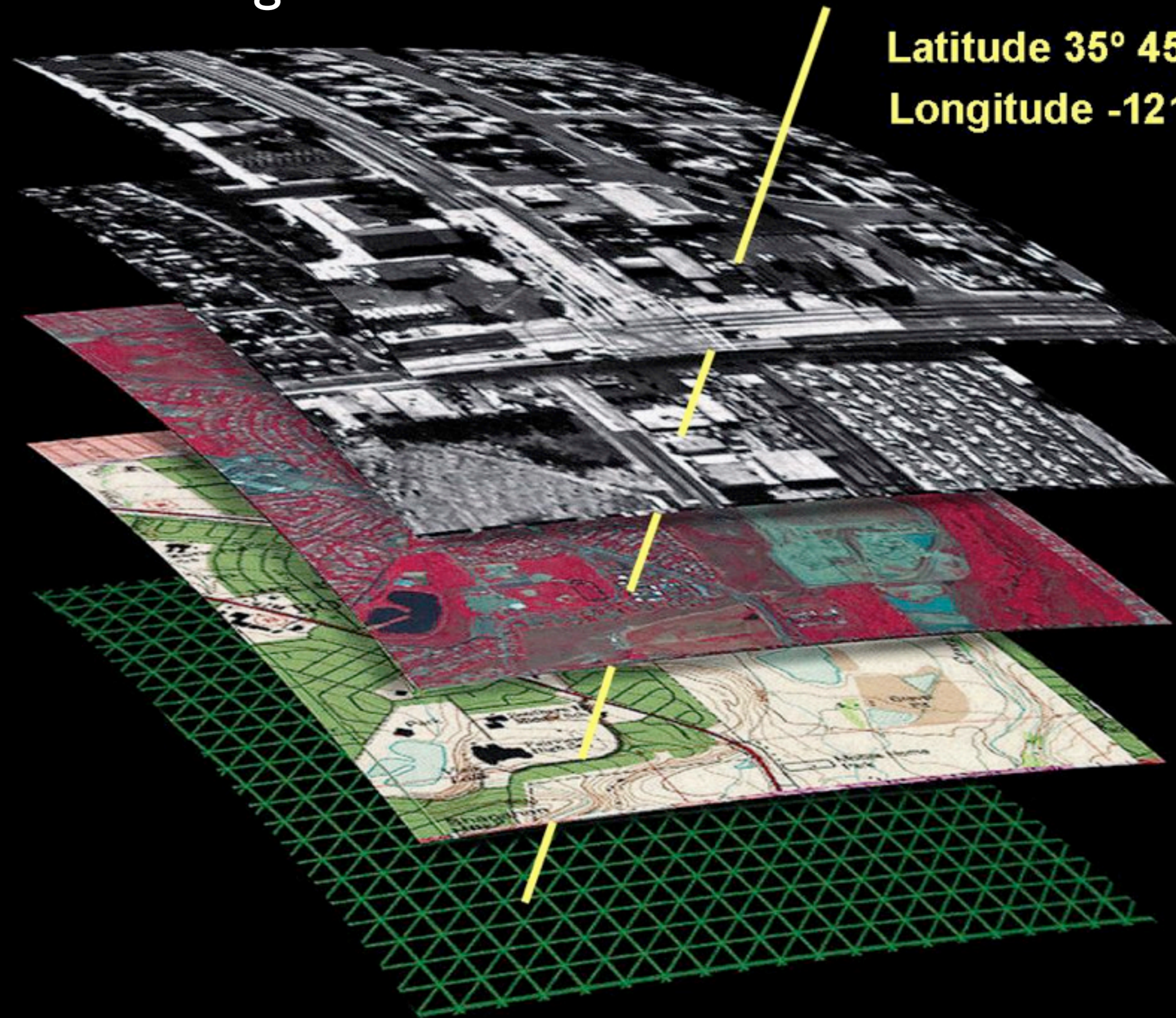
Layers

- tezka_voda_najdbe
- 1490_00
- ko_slo



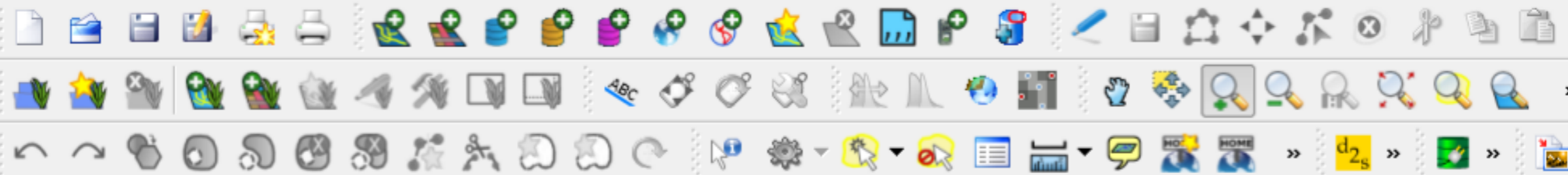
Control rendering order

Georeferencing

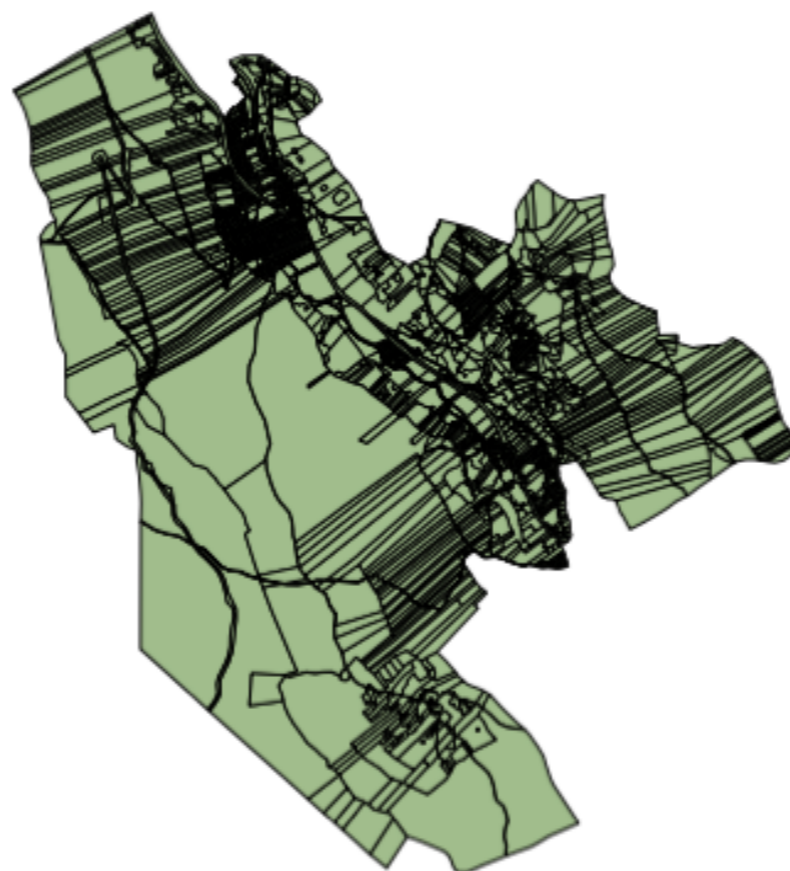


Latitude 35° 45' 20"
Longitude -121° 28' 52"



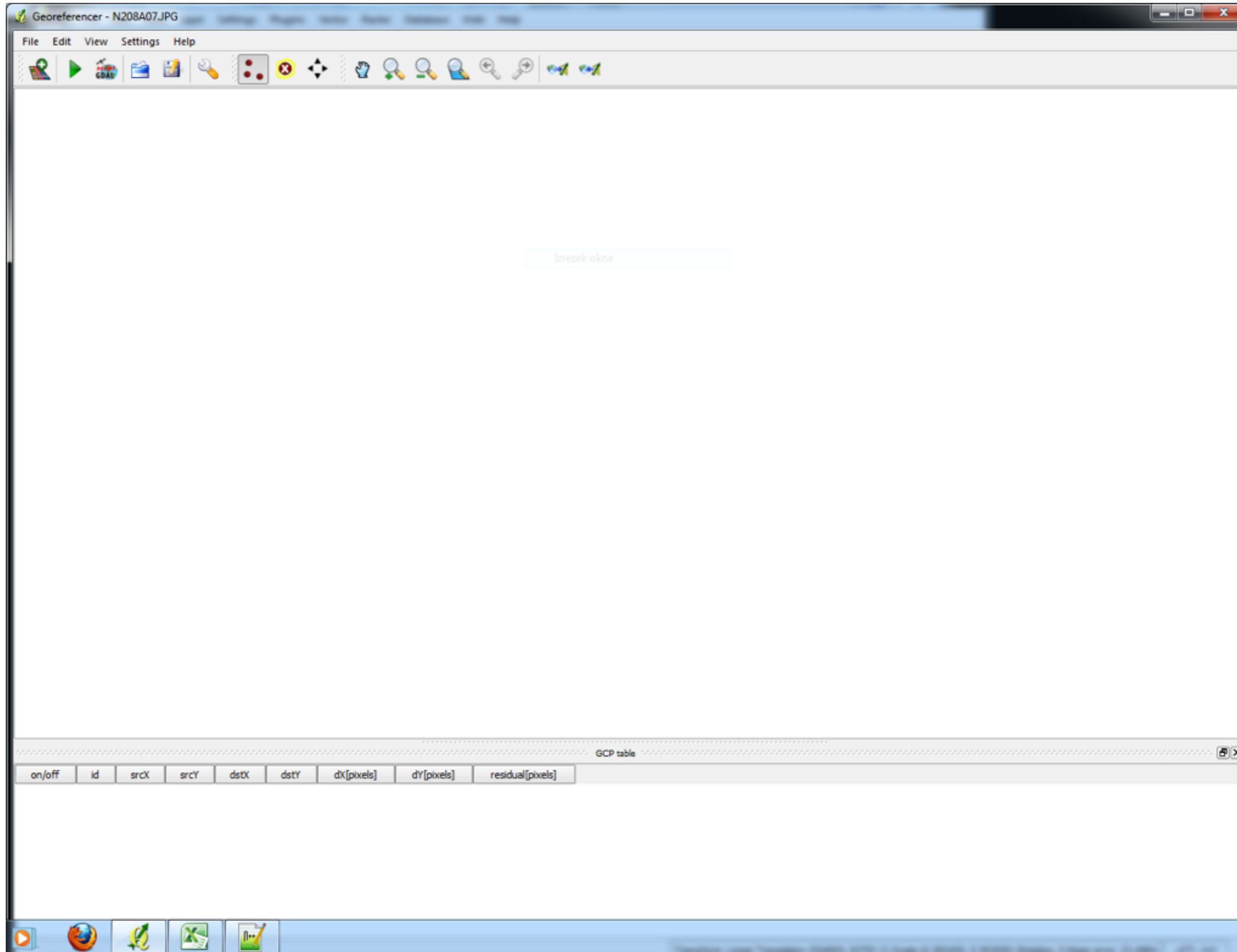


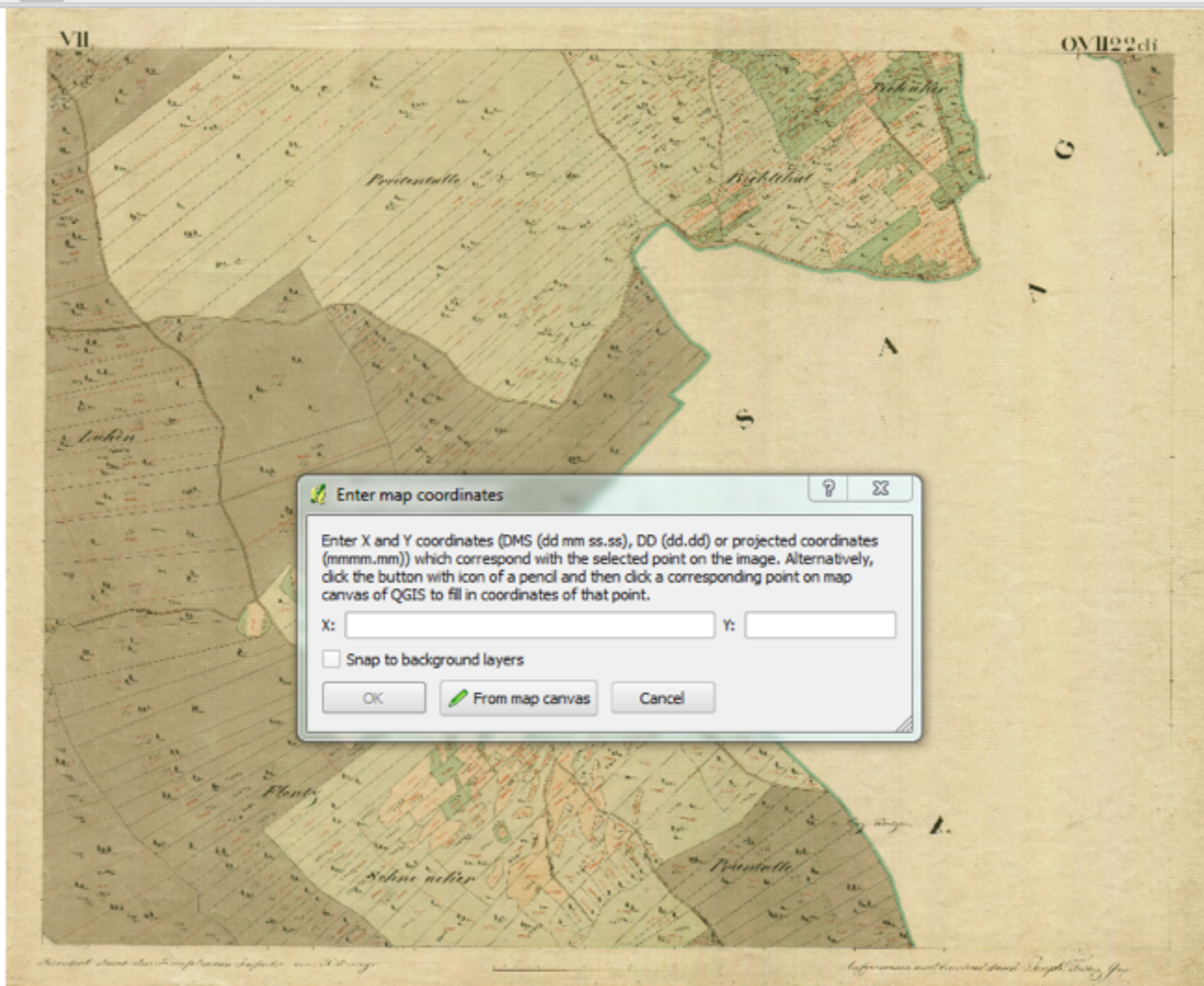
Layers



Control rendering order

Georeferencer (Raster->Georeferencer)





Enter map coordinates

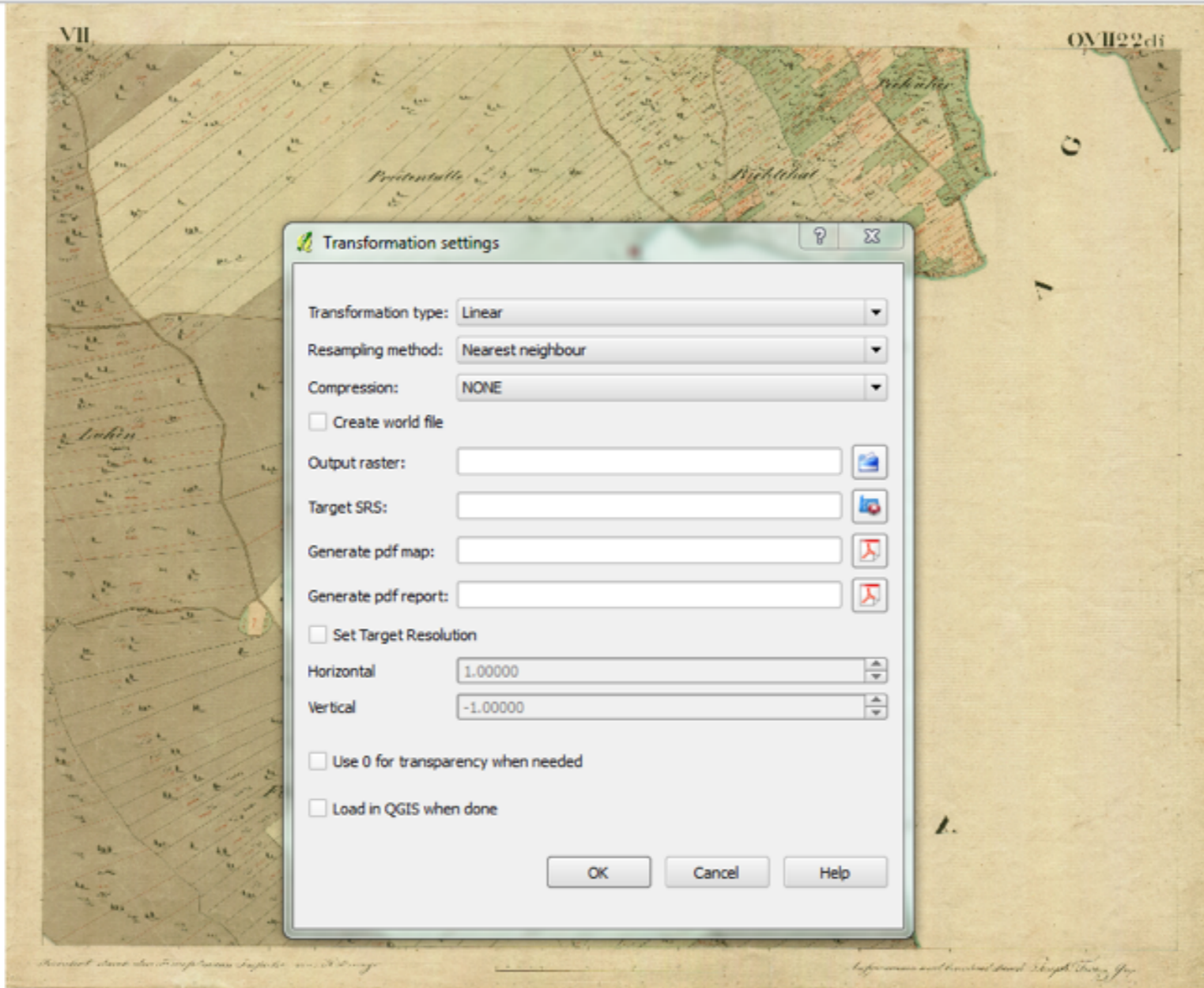
Enter X and Y coordinates (DMS (dd mm ss.ss), DD (dd.dd) or projected coordinates (mmm.mm)) which correspond with the selected point on the image. Alternatively, click the button with icon of a pencil and then click a corresponding point on map canvas of QGIS to fill in coordinates of that point.

X: Y:

Snap to background layers

GCP table

on/off	id	srcX	srcY	dstX	dstY	dX[pixels]	dY[pixels]	residual[pixels]
<input checked="" type="checkbox"/>	0	2470.41	2441.54	505847.45	62200.87	0.00	0.00	0.00



Transformation settings

Transformation type: Linear

Resampling method: Nearest neighbour

Compression: NONE

Create world file

Output raster:

Target SRS:

Generate pdf map:

Generate pdf report:

Set Target Resolution

Horizontal: 1.00000

Vertical: -1.00000

Use 0 for transparency when needed

Load in QGIS when done

OK Cancel Help

GCP table

on/off	id	srcX	srcY	dstX	dstY	dX[pixels]	dY[pixels]	residual[pixels]
✘	0	2470.41	2441.54	505847.45	62200.87	0.00	0.00	0.00
✘	1	2842.63	1122.98	506273.64	62334.06	0.00	-0.00	0.00

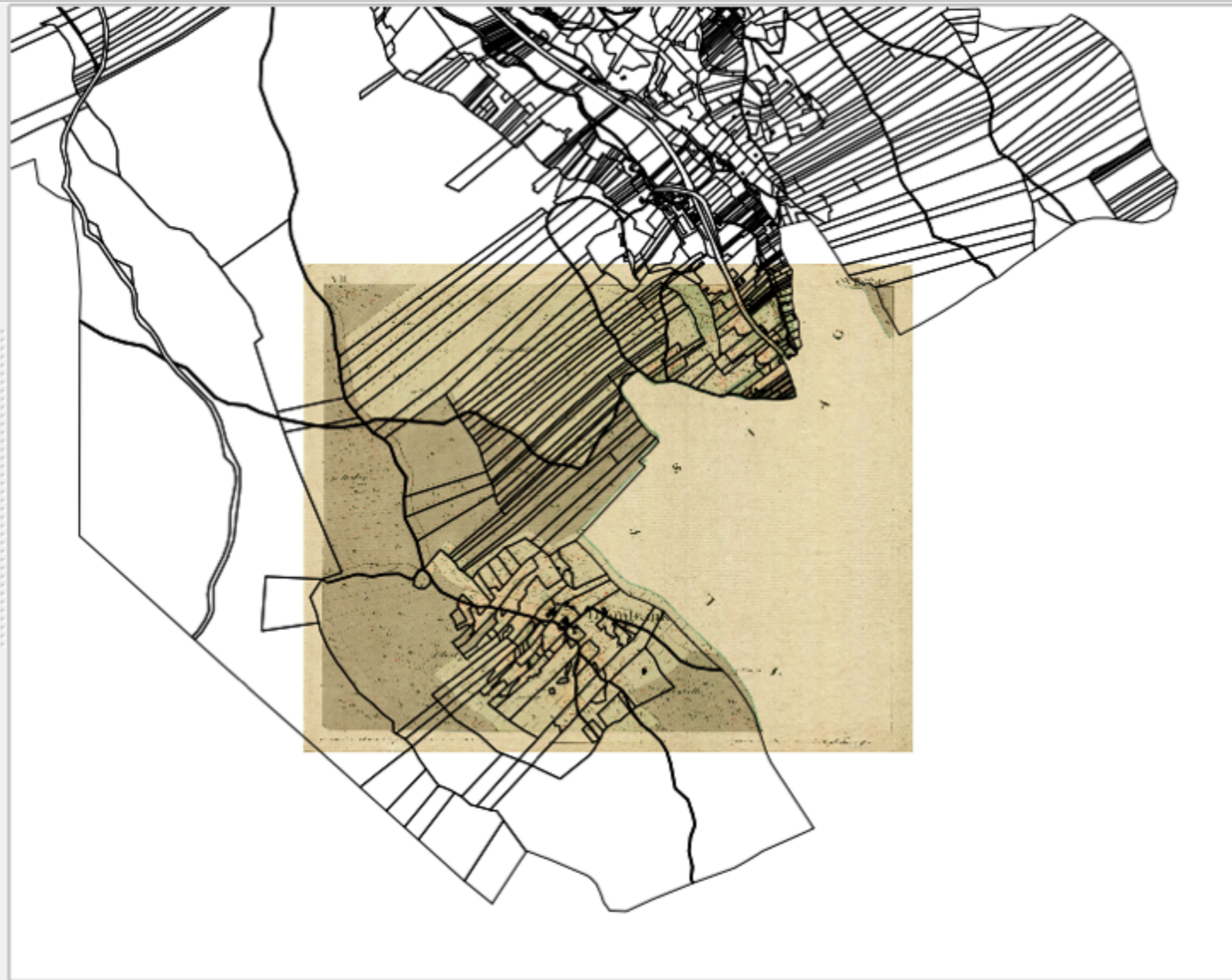




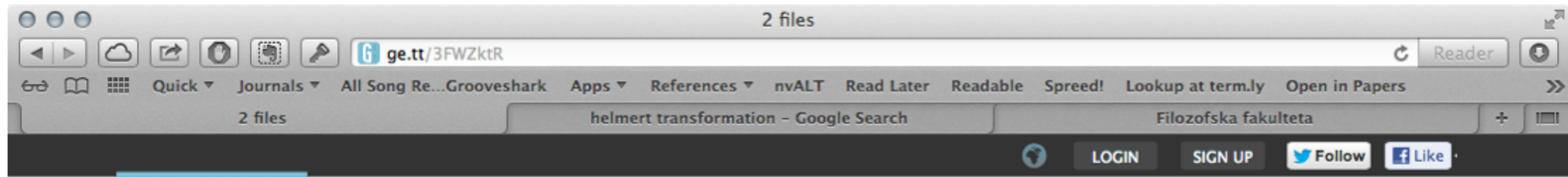
Layers

- 1498_00
- 1

Control rendering order



<http://ge.tt/3FWZktR?c>



Share this album



<http://ge.tt/3FWZktR>
Copy link

2 files

csv	tezka_voda_najdbe.csv	21 KB	0
csvt	tezka_voda_najdbe.csvt	20 B	0

Files shared without an account are available for 30 days. Create an account to save them. [?](#)
Sign up using [Facebook](#) or [click here](#). Already a user? [Log in](#) to store the files.

This album:

19 Nov 2012

21 KB

0 downloads

2 files

[Add files](#)

[Download all](#)

[Remove album](#)