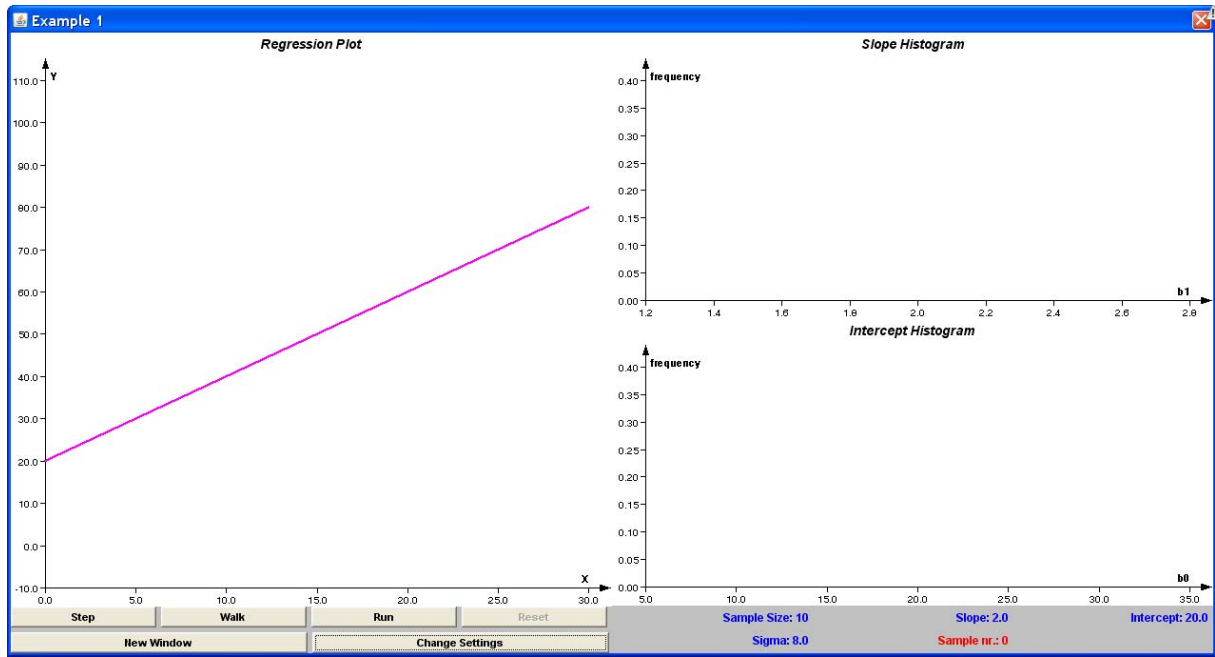


**Monte Carlo eksperimenti:** <http://lstat.kuleuven.be/java/>

**Regresijska analiza: Histogrami regresijskih koeficientov**

**OSNOVNO OKNO:**



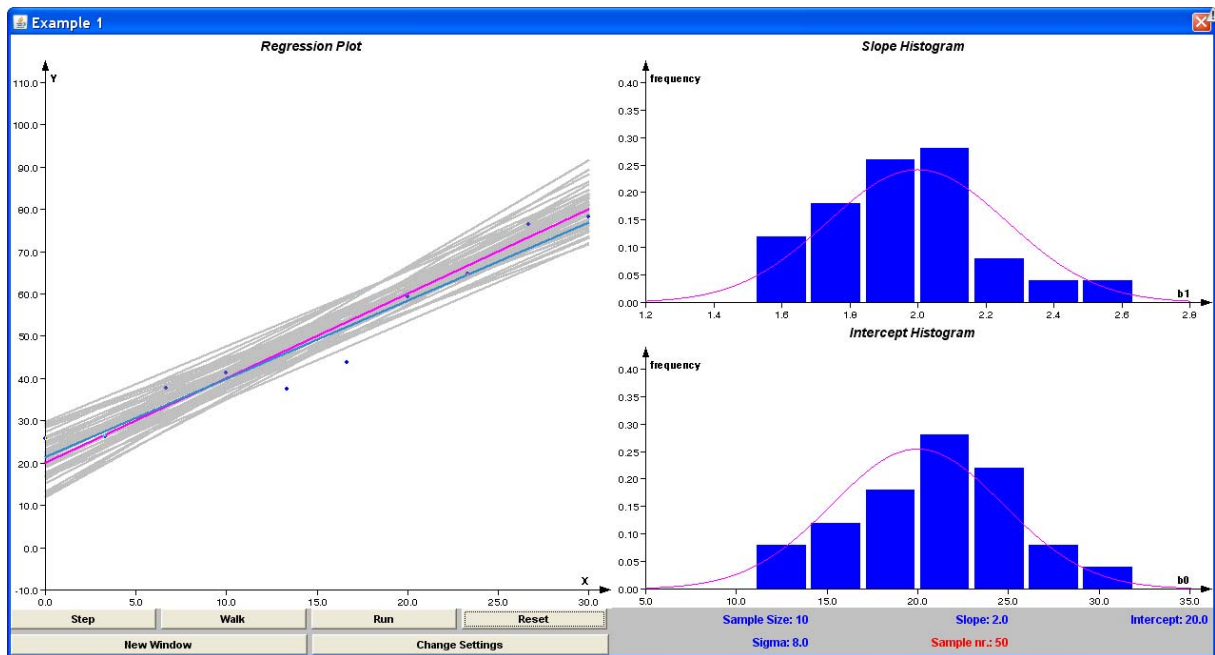
**ZAČETNE NASTAVITVE:**

The 'Parameters for Ex. 1' dialog box contains the following settings:

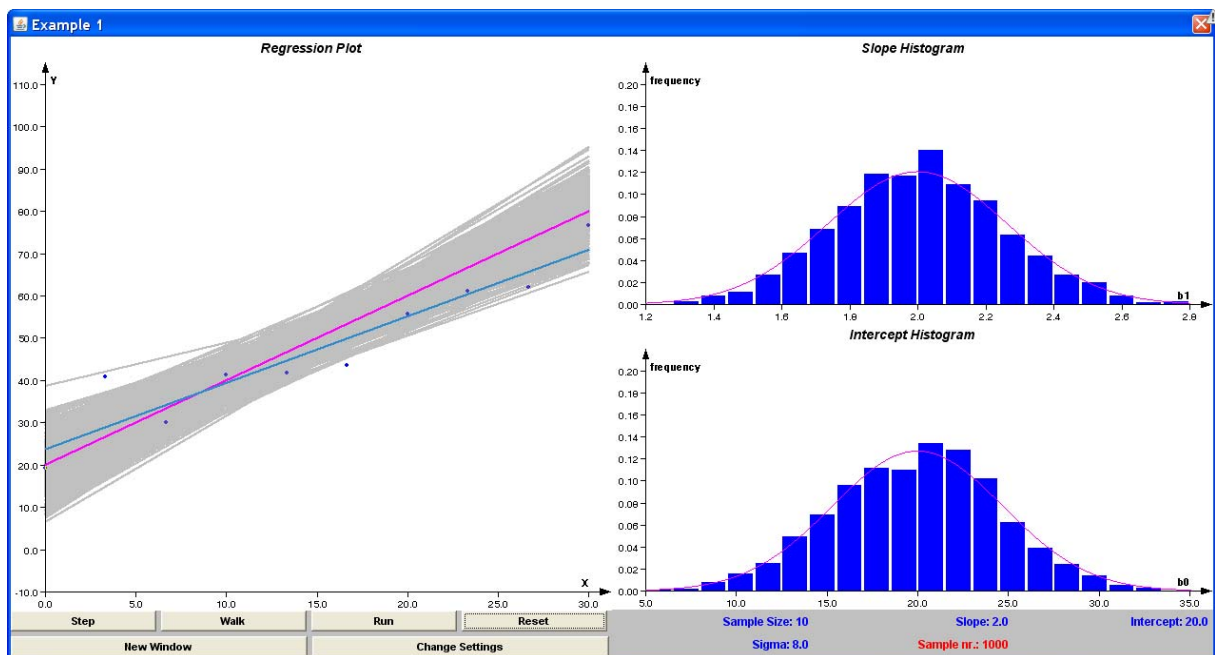
- Independent Variable X:
- Minimum X:
- Maximum X:
- Dependent Variable Y:
- Slope:
- Intercept:
- Standard Deviation:
- Sample Size:
- Number of Samples:
- Take scale from first example

Buttons: OK, Defaults, Cancel

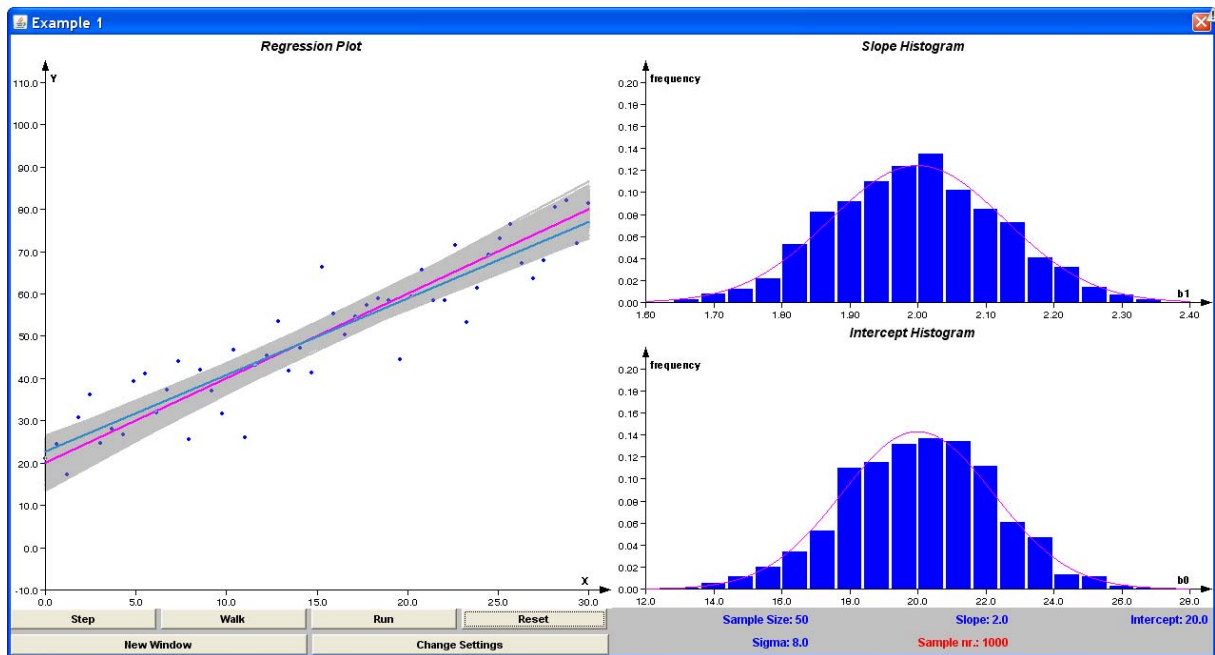
## EKSPERIMENT 1:



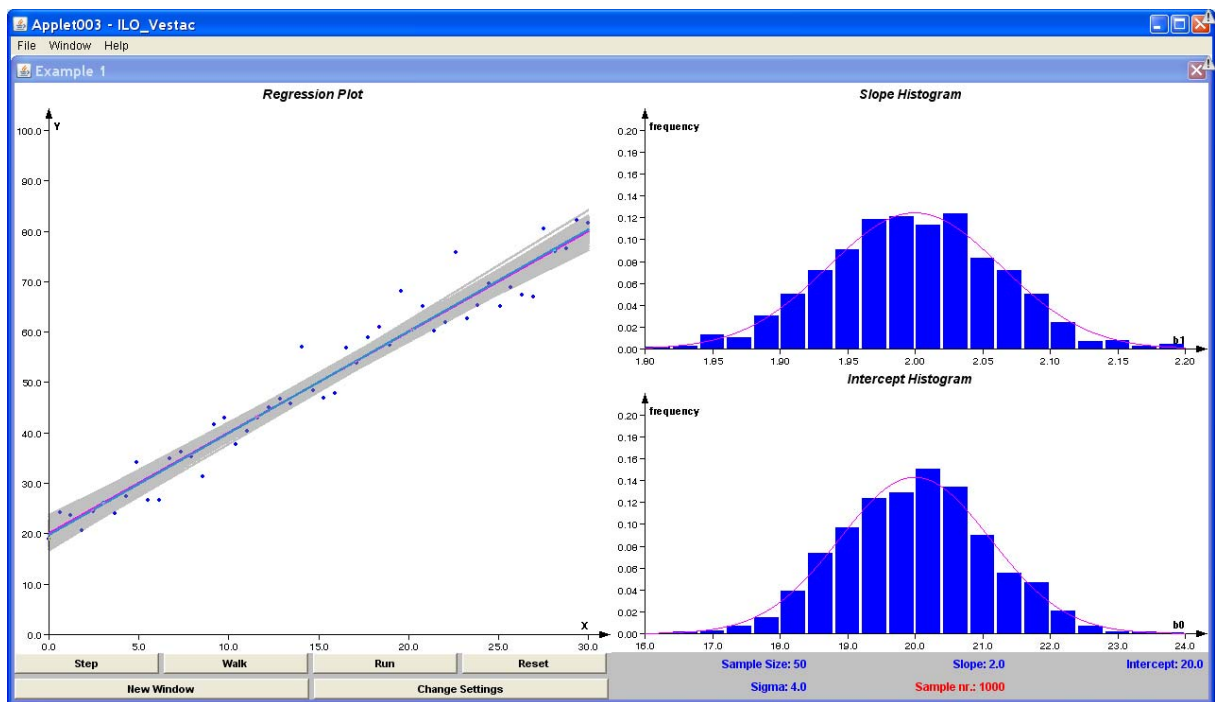
## EKSPERIMENT 2:



### EKSPERIMENT 3:



### EKSPERIMENT 4:



# EKSPERIMENT 5:

