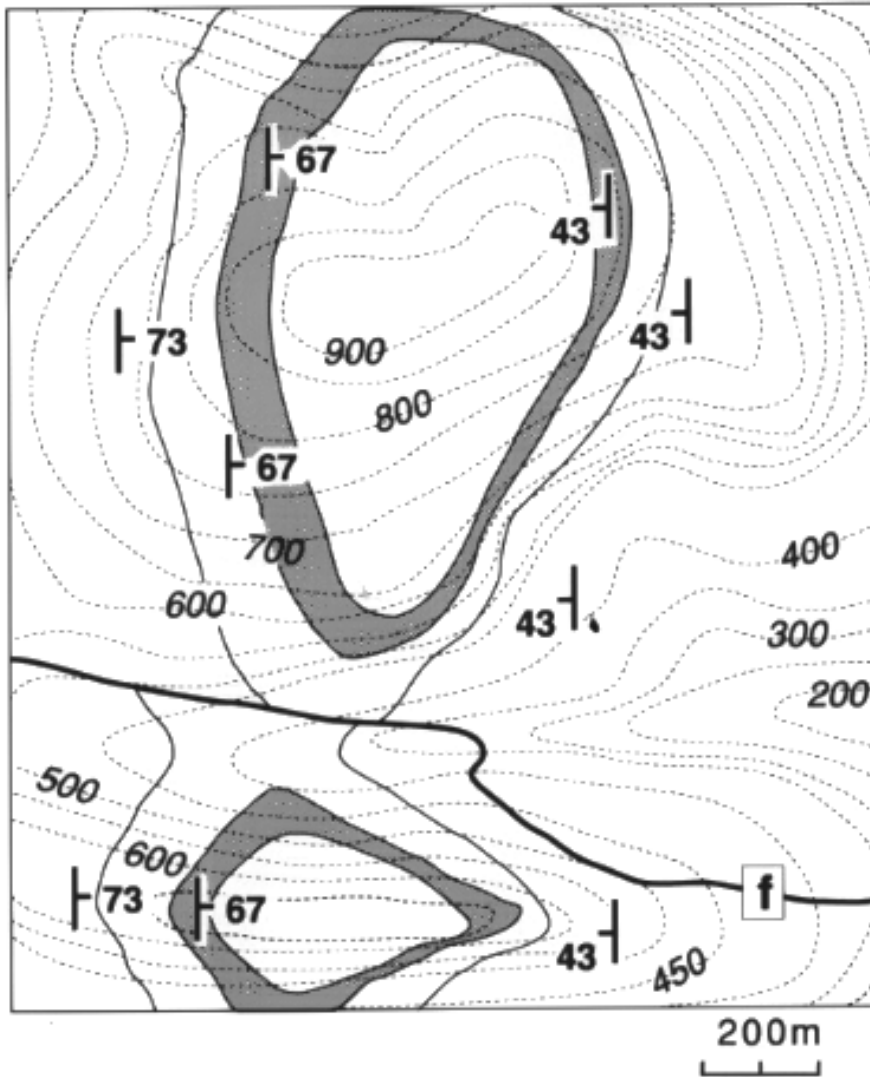
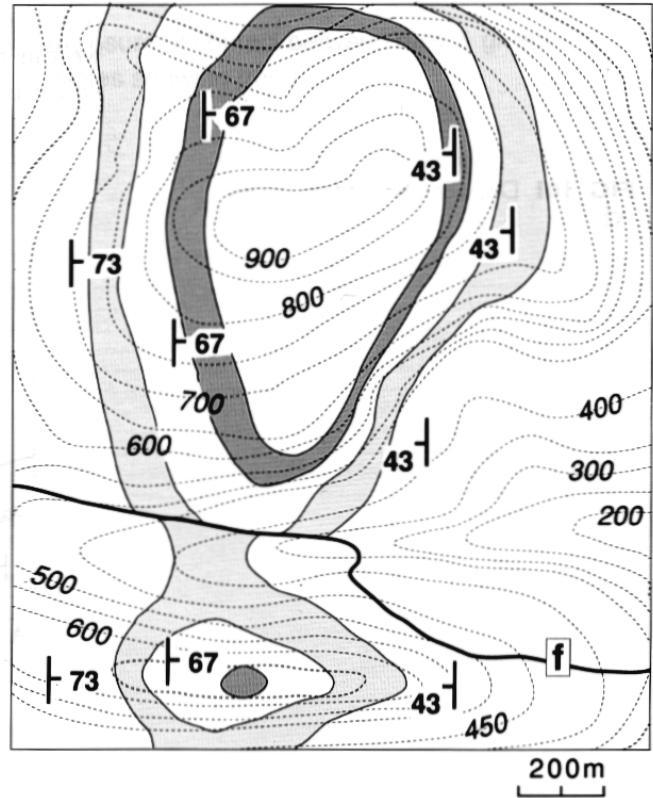
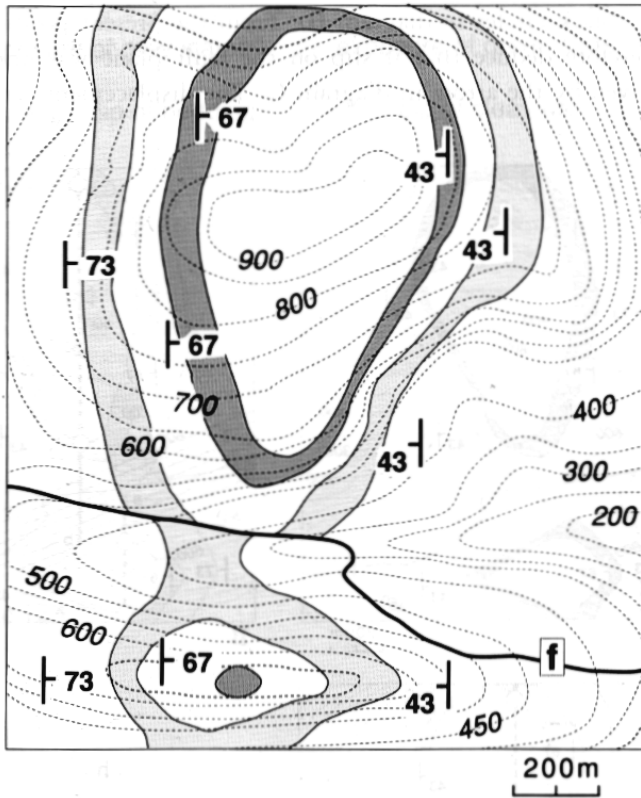


1. Naloga



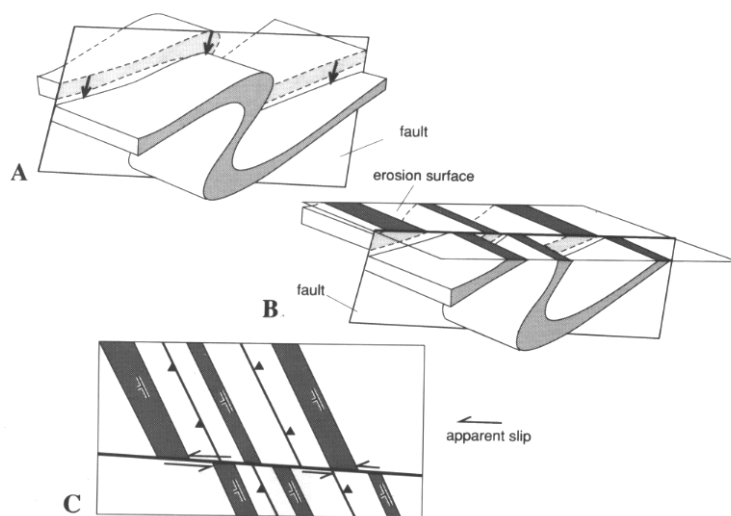
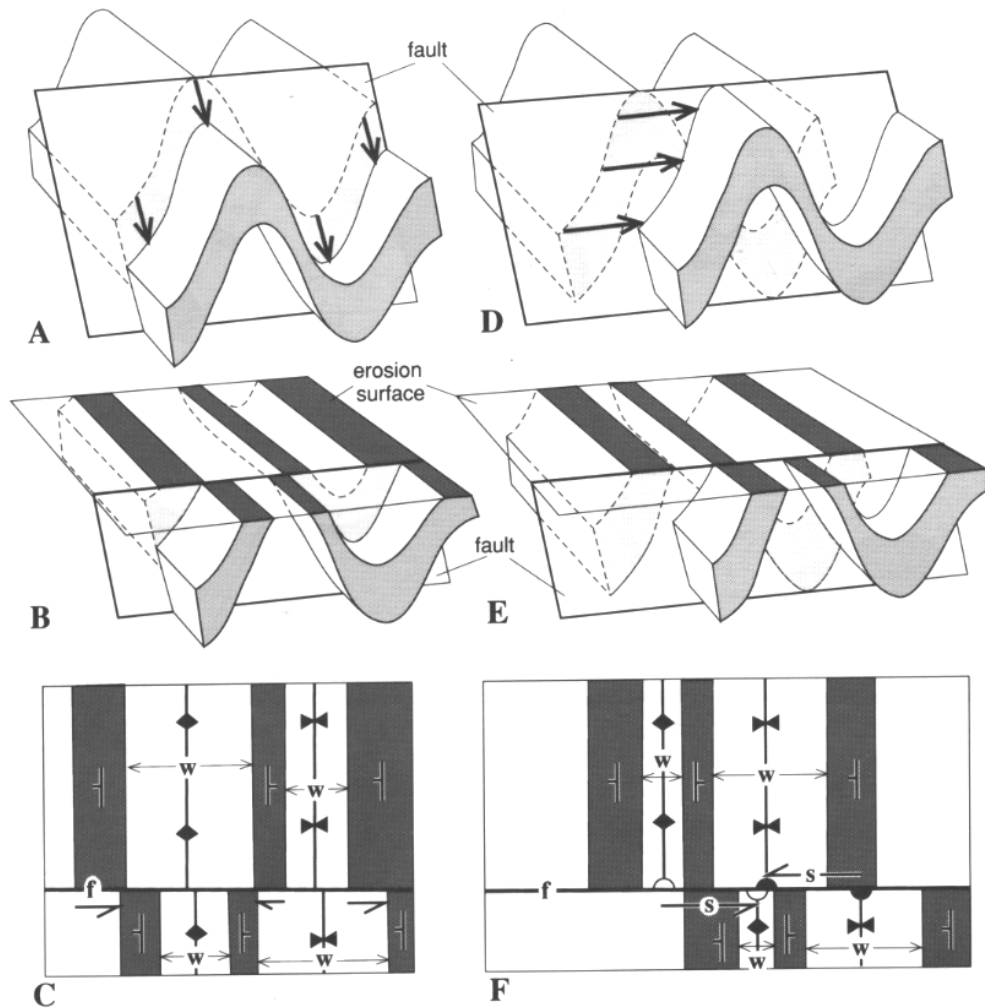
Vaje iz strukturne geologije in tektonike – ANALIZA KART: PREMIKI

2. Naloga



Vaje iz strukturne geologije in tektonike – ANALIZA KART: PREMIKI

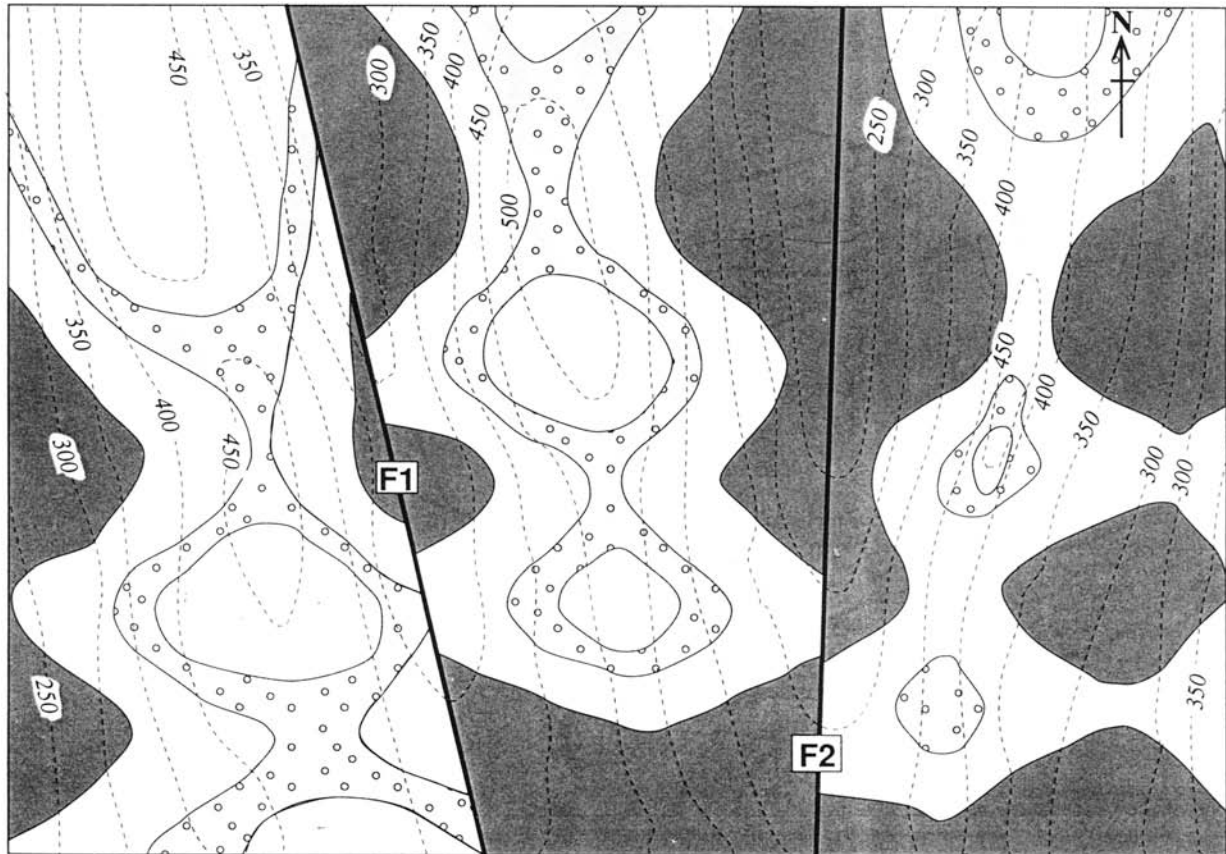
3. Naloga




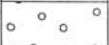


Vaje iz strukturne geologije in tektonike – ANALIZA KART: PREMIKI

Domača naloga

Preloma na karti sta presekala spodaj navedeno vertikalno zaporedje sedimentnih kamnin. Ali lahko na podlagi premika izdankov ob prelomu ugotovite, kakšna je bila smer premika ob posameznem prelomu? Določite vpad obeh prelomov in ugotovite, za kakšen tip prelomov gre. Na obeh straneh prelomov poiščite pregibe/temena glavnih gub in ocenite, kakšni/kolikšni so bili premiki ob prelomu (ob predpostavki, da je bil premik enosmeren, določite ali gre za premik po vpadu, premik po smeri ali celo poševni premik). Rezultate/ugotovitve preverite s konstrukcijo strukturnih izohips in profilov gub na obeh straneh prelomov.



Vertical sequence:

	mudstone
	sandstone
	mudstone
	siltstone

200m