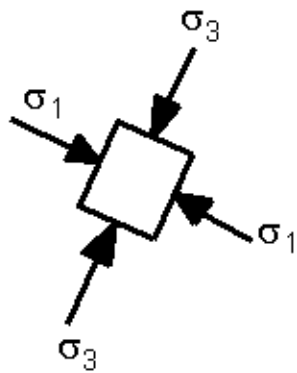


Teorija: napetostno stanje v stenah izvrtine oz. tunela

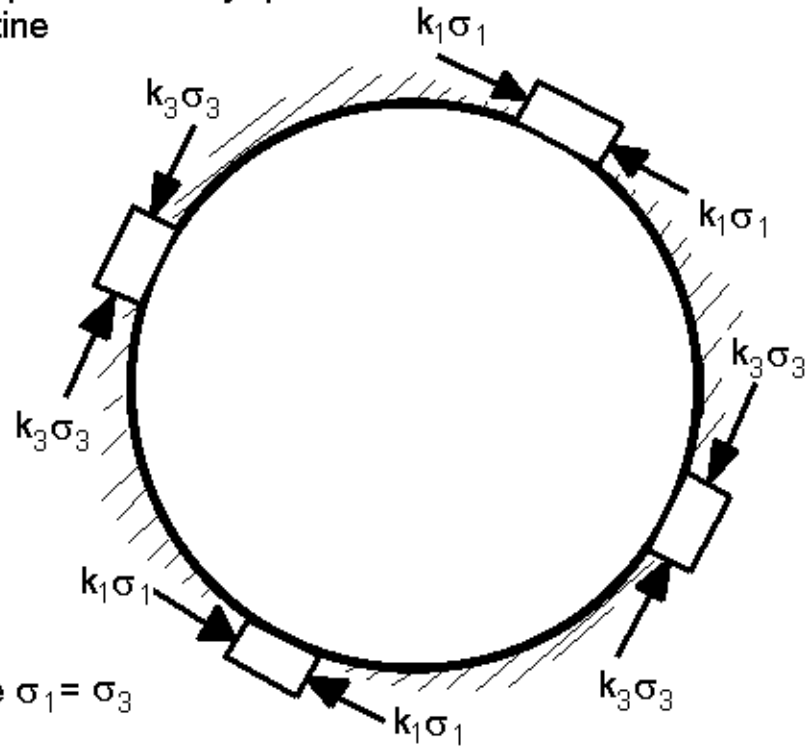
Predpostavka: linearno elastičen krhek material (zanemarljiva plastifikacija)

Primarno napetostno stanje

$$|\sigma_3| > |\sigma_1|$$



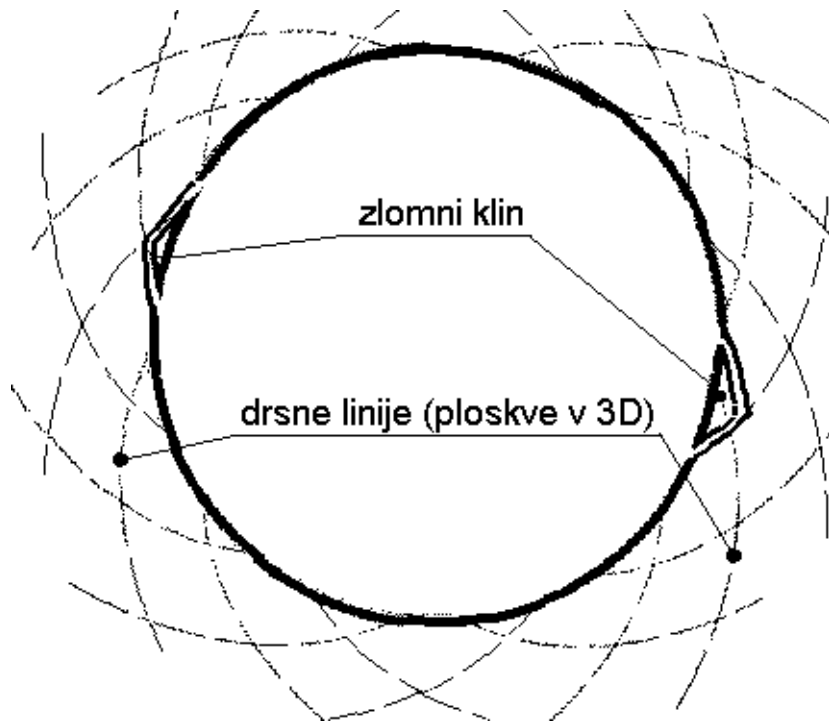
Napetostno stanje po izdelavi vrtine



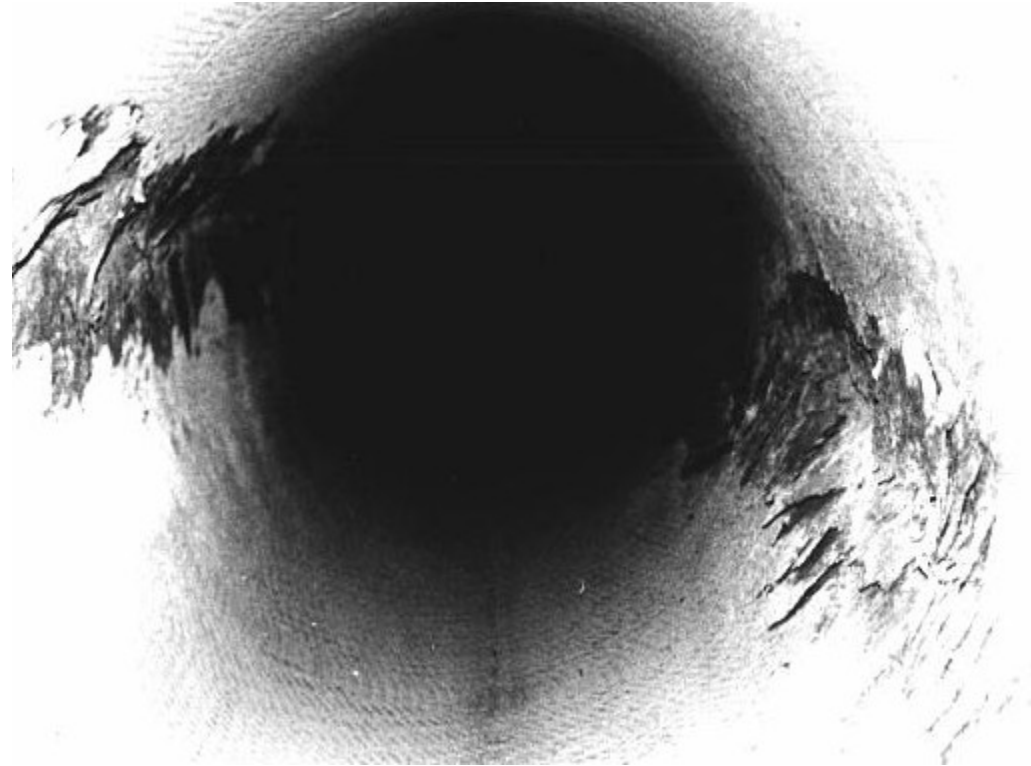
$$k_1, k_3 \in \mathcal{R}$$

$$k_1 = k_3 = 2, \text{ če } \sigma_1 = \sigma_3$$

Teorija: drsne linije



praksa: lokalna porušitev



Vir: Hoek E., Kaiser P.K., Bawden W.F.:
Support of underground excavations in hard rock, str.122