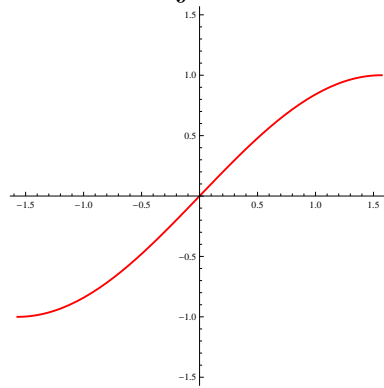
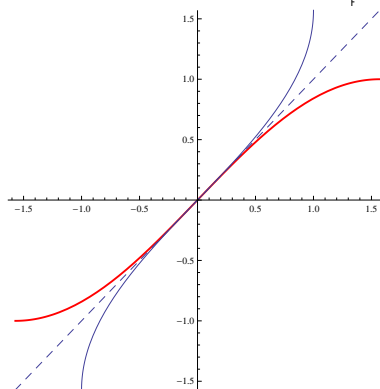
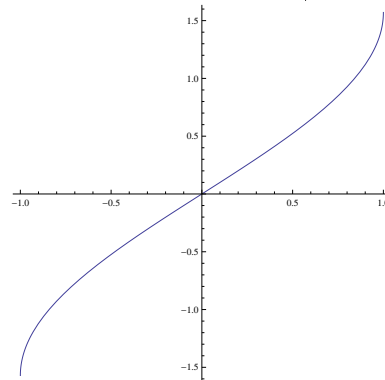


Inverzne funkcije kotnih funkcij

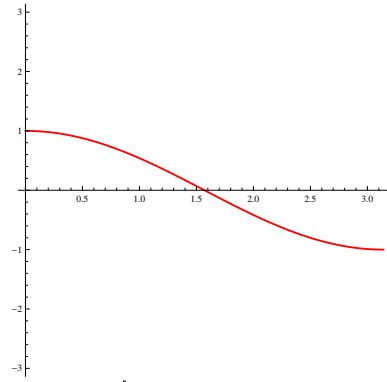
$$f(x) = \sin x, \quad -\pi/2 \leq x \leq \pi/2,$$



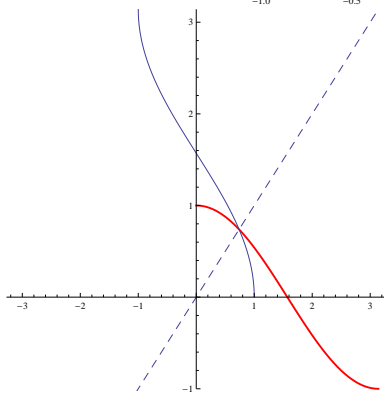
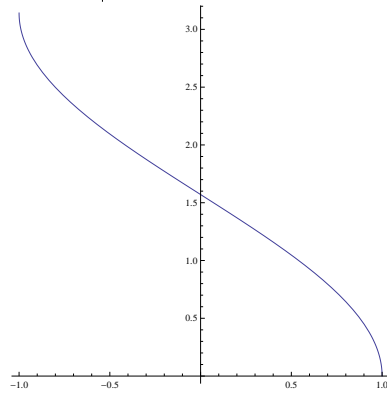
$$f^{-1}(x) = \text{Arcsin}x$$



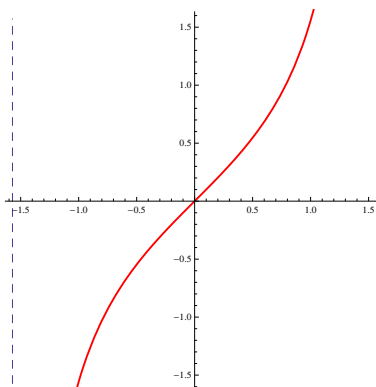
$$f(x) = \cos x, 0 \leq x \leq \pi$$



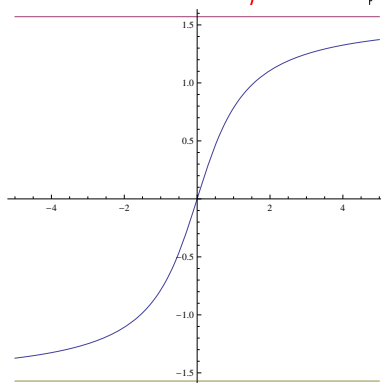
$$f^{-1}(x) = \text{Arccos } x$$



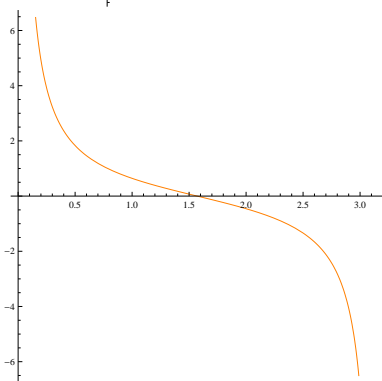
$$f(x) = \operatorname{tg}x, \quad -\pi/2 < x < \pi/2,$$



$$f^{-1}(x) = \operatorname{Arctg}x$$



$$f(x) = \operatorname{ctg}x, \quad 0 < x < \pi$$



$$f^{-1}(x) = \operatorname{Arcctg}x$$

