

Raport osnove[2]: 1A1B

A 31.25 tex 300 S/1

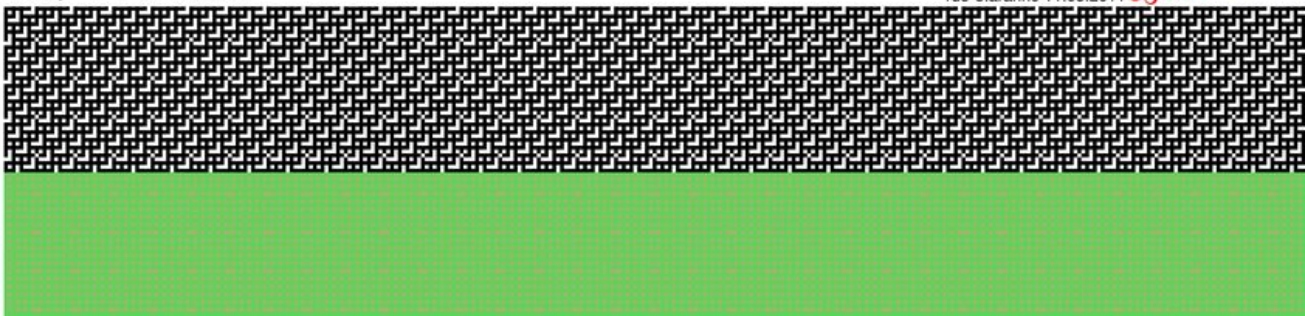
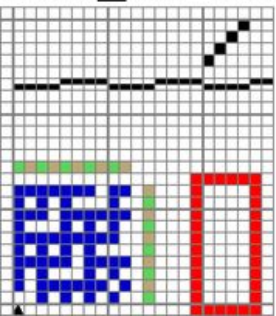
B 32 Nm 800 S/2
24693

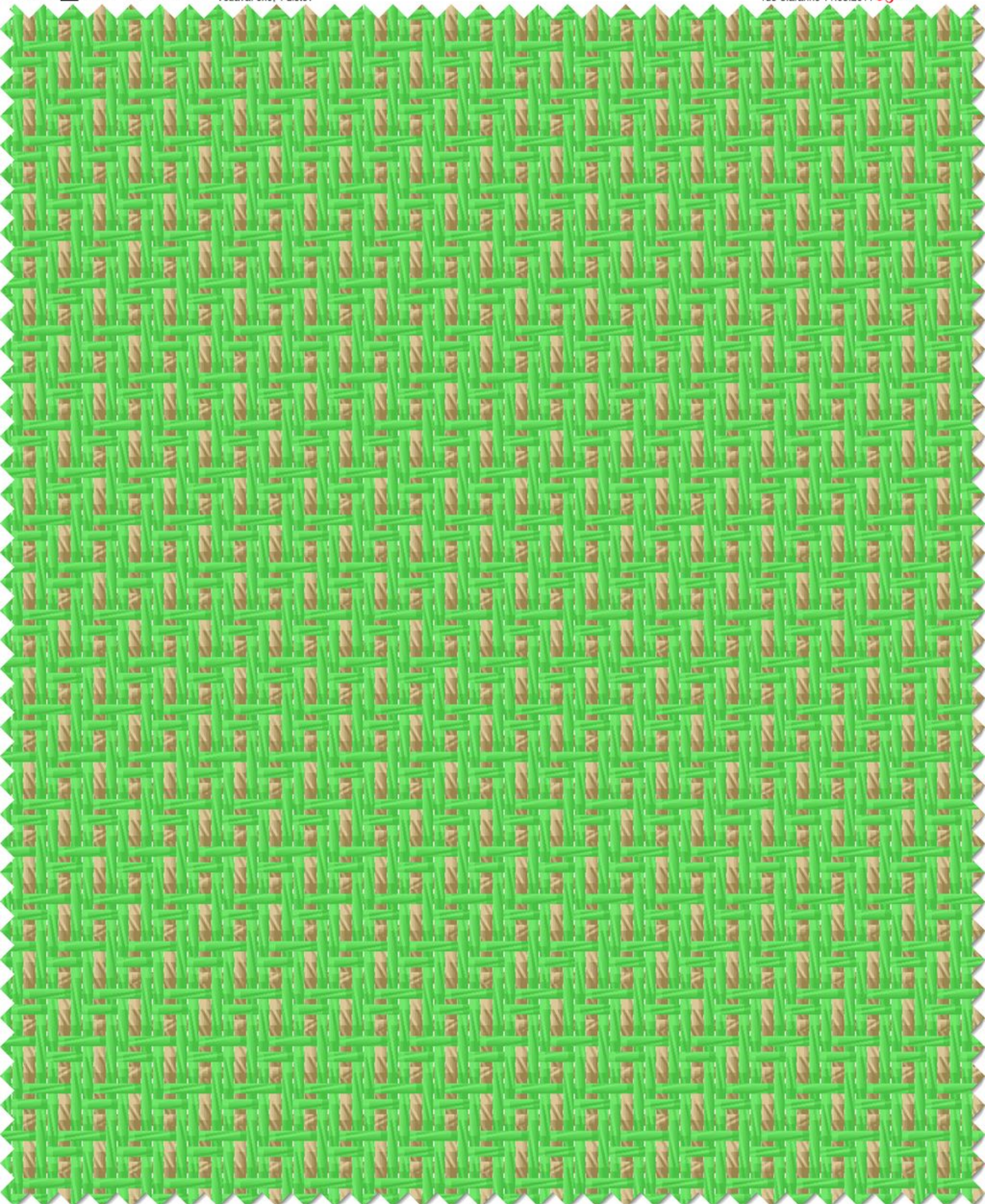
Raport votka[2]: 1a1b

a 31.25 tex 300 S/1

b 32 Nm 800 S/2
24693

New_file 10x10; 4 Listov





Raport osnove[3]: 2A1B

A 31.25 tex 300 S/1

B 32 Nm 800 S/2
24693

Raport votka[3]: 2a1b

a 31.25 tex 300 S/1

b 32 Nm 800 S/2
24693

New_file 6x6; 4 Listov

