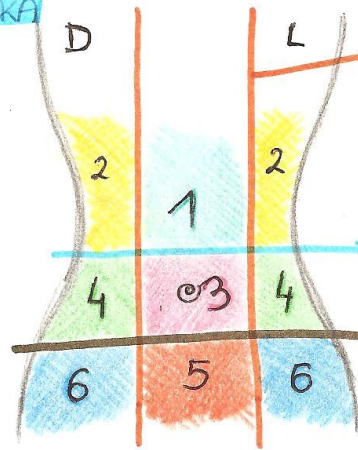


**TOPOGRAFSKA
DELITEV
TREBUŠNE
STENE**



MEDIOKLAVIKULARNA RAVNINA

- 1 - EPIGASTRIČNA REGIJA
- 2 - DESNI IN LEVI HIPOHONDRIJ
- 3 - UMBILIKALNA / POKROVNA REGIJA

SUBKOSTALNA RAVNINA

- 4 - DESNA IN LEVA LATERALNA REGIJA

TRANSTUBERKULARNA RAVNINA

- 5 - PUBLIČNA REGIJA
- 6 - DESNA IN LEVA INGVINALNA REGIJA

EPITELIJSKO

TKIVO: * enoskladni visokopriamatski epitelij



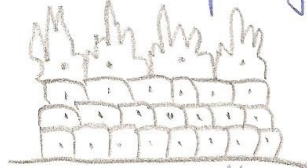
* večskladni ploščati epitelij



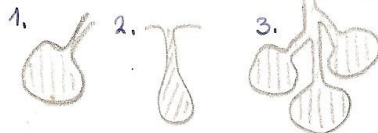
* večskladni visokopriamatski epitelij



* večvrstni visokopriamatski epitelij

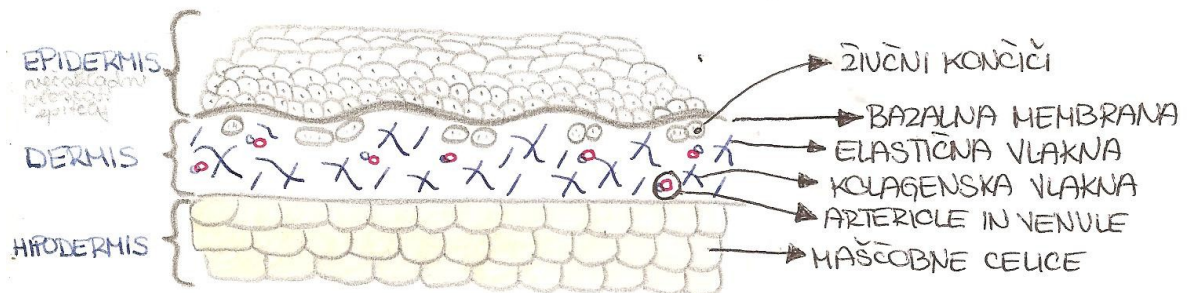


* žlezni epitelij

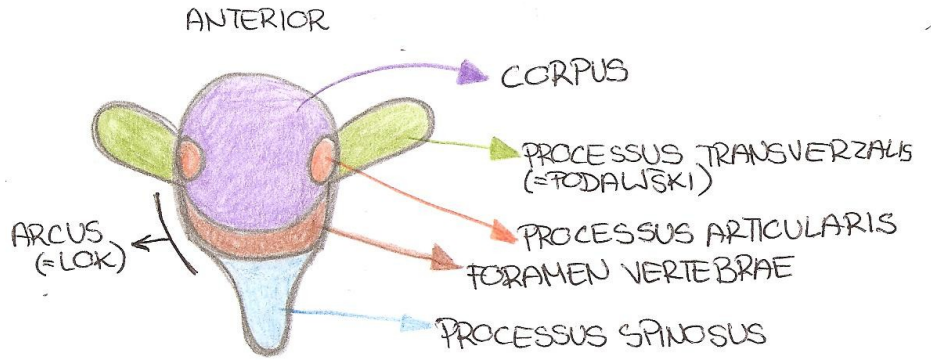


- 1. MEŠIČKASTA - AVEOLARNA ŽLEZA
- 2. CEVASTA - TUBULARNA ŽLEZA
- 3. KOMBINIRANA; CEVASIO-TUBULARNA ŽLEZA

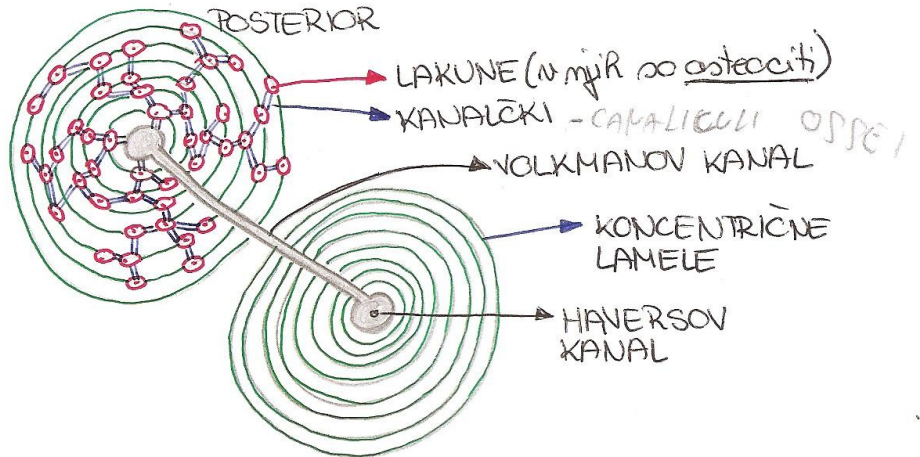
VEZIVA: KOŽA



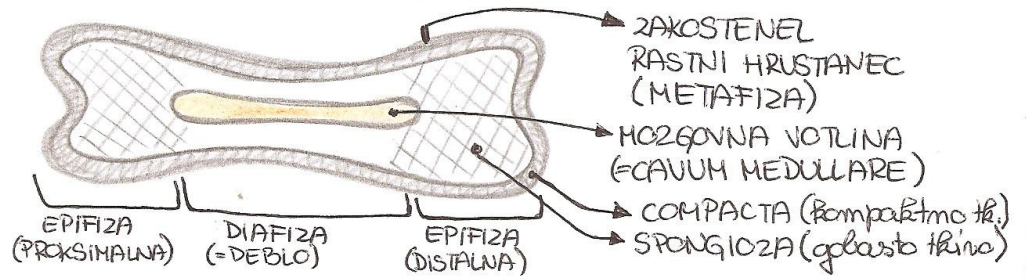
**DISKUS
INTERVERTEBRALIS**
→ POGLED OD ZGORAJ



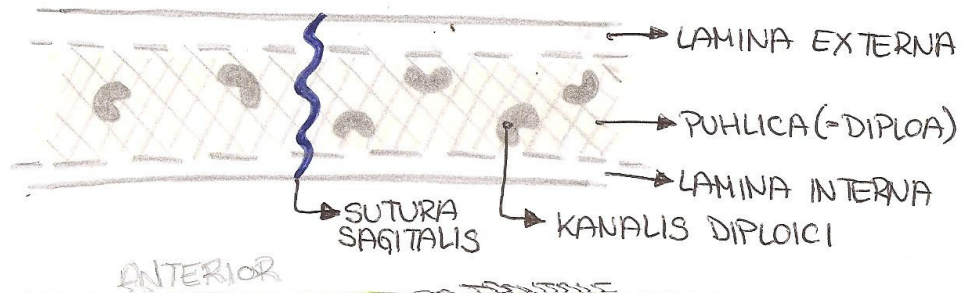
**KOSTJINA: PRECNI
PREREZ
KOSTJINE**



**FRONTALNI
PREREZ
DOLGE KOSTI**



**FRONTALNI
PREREZ
PLOSKE KOSTI**



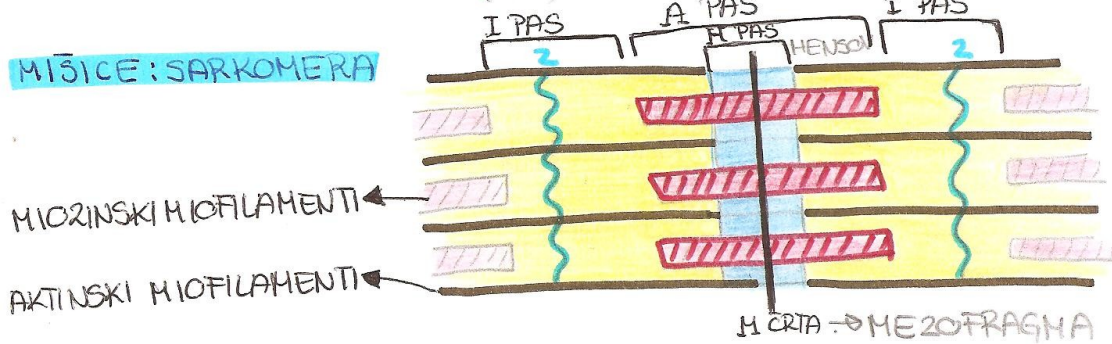
**MEČAVE
(FONTANELE)
NOVOROJENČKA**



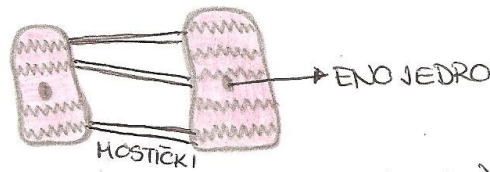
**FRONTALNI
PRERES
DIARTROZE
(PRAVEGA SKLEPA)**



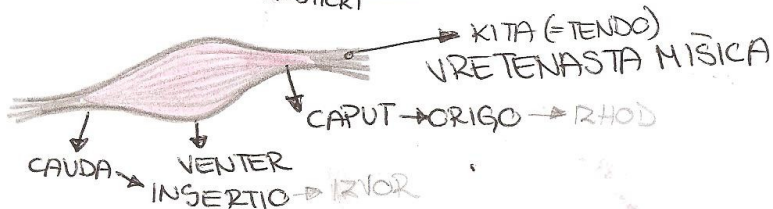
MISICE: SARKOMERA



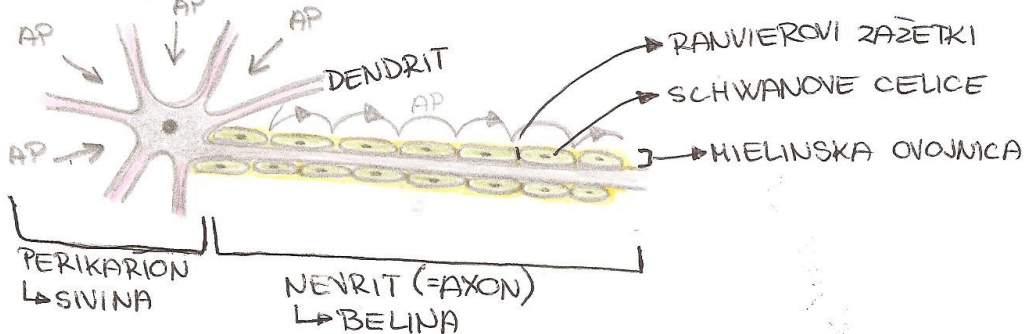
SRČNA MUSKULATURA



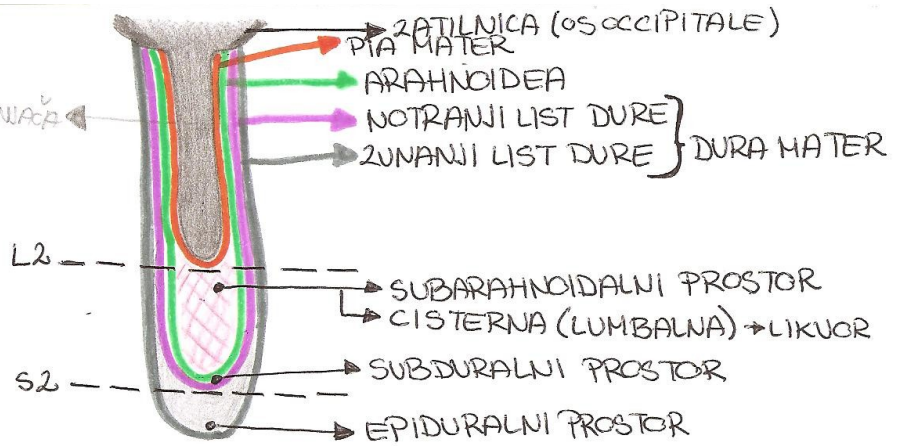
**SKELETNE
MISICE**



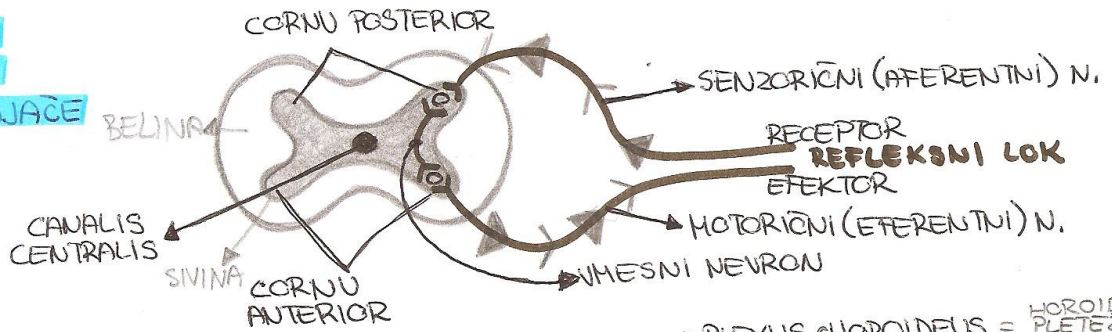
ŽIVČENJE: NEVRON



FRONTALNI PREREZ
HRBTENJACE
2 OVOJNICAMI

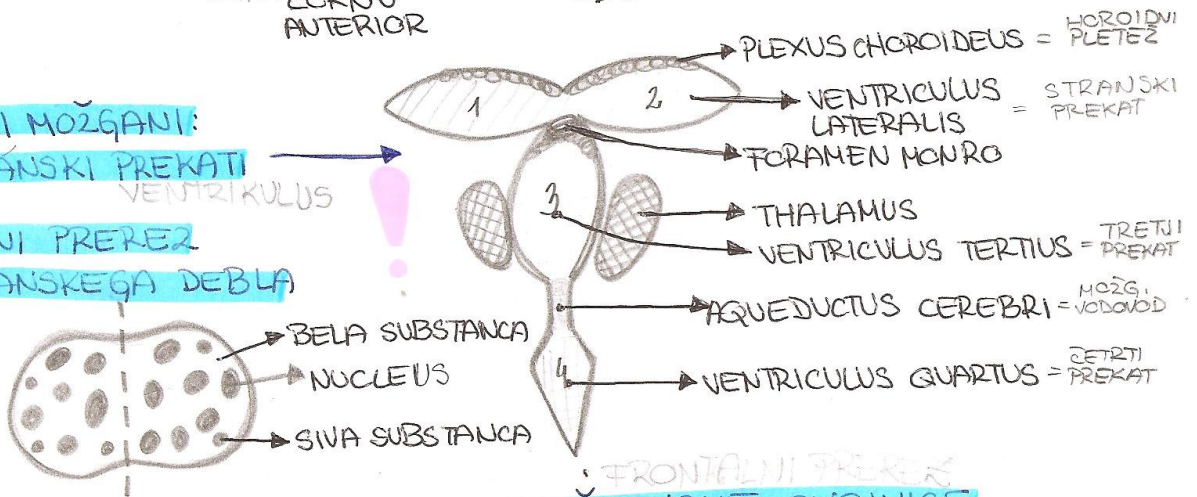


PREČNI PREREZ
HRBTENJACE

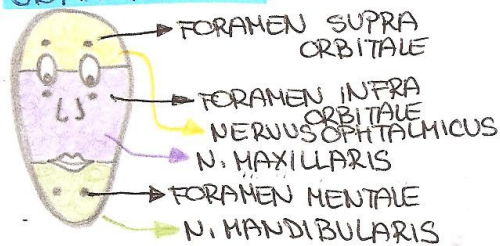


VELIKI MOŽGANI:
MOŽGANSKI PREKATI

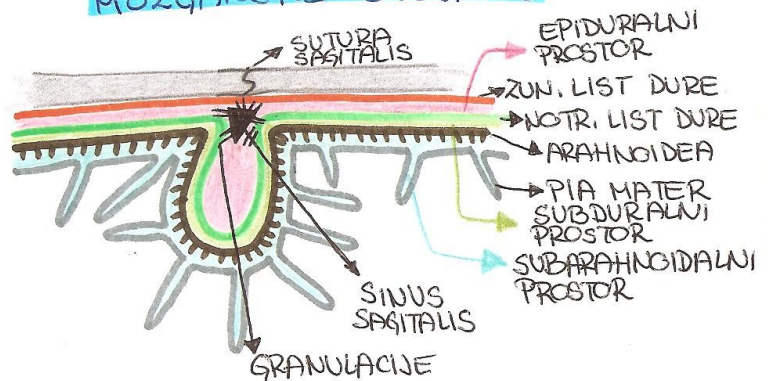
PREČNI PREREZ
MOŽGANSKEGA DEBLA



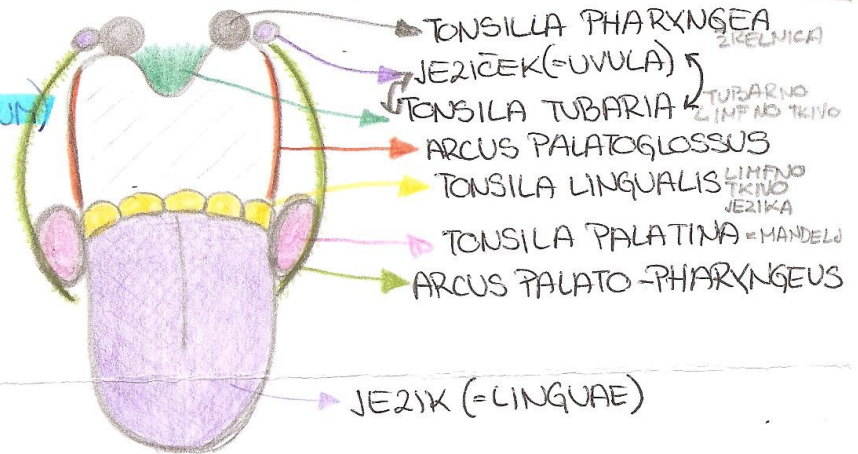
OBRAZNI ŽIVCI



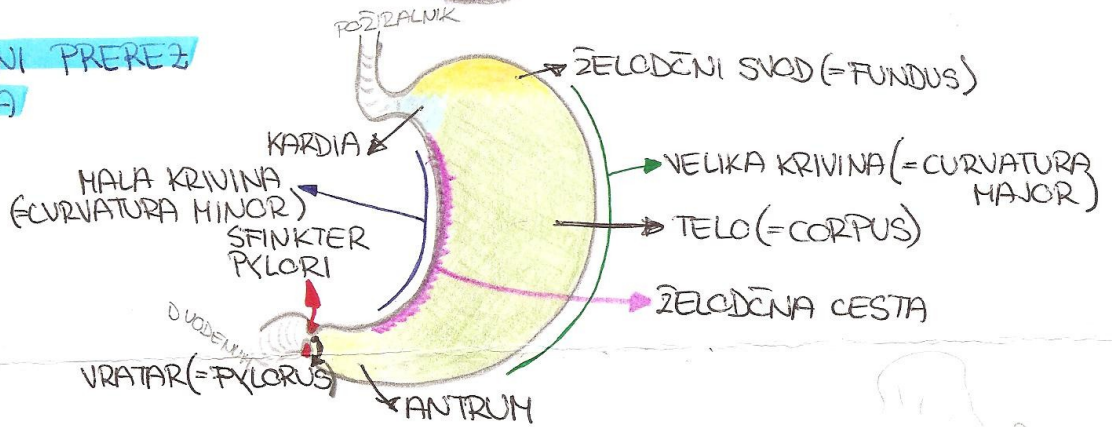
FRONTALNI PREREZ
MOŽGANSKE OVOJNICE



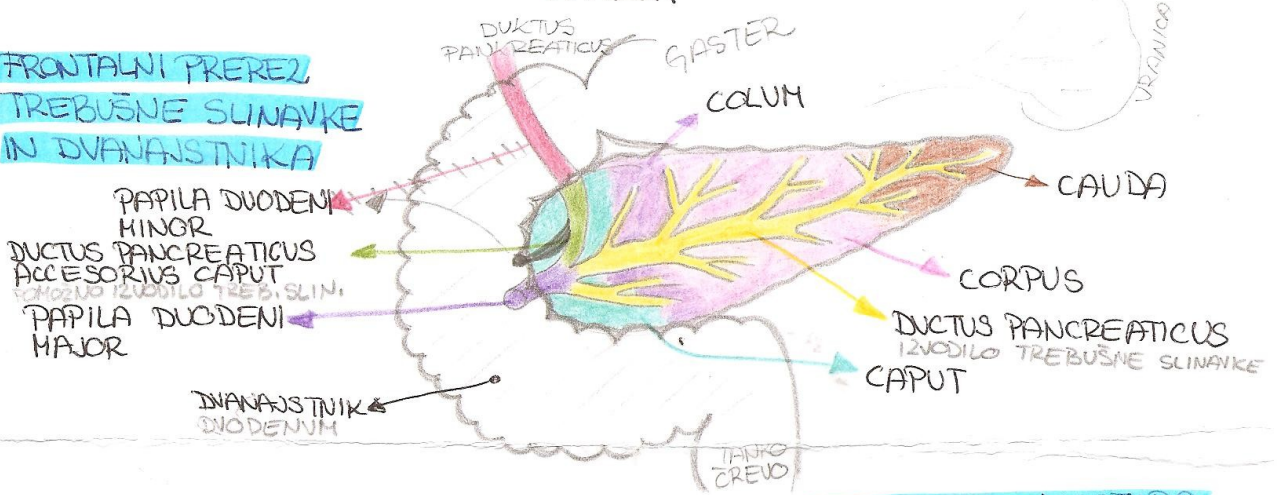
**PREBAILLA: GOLTNA
ORINA
(ISTHMUS FAUCIUM)**



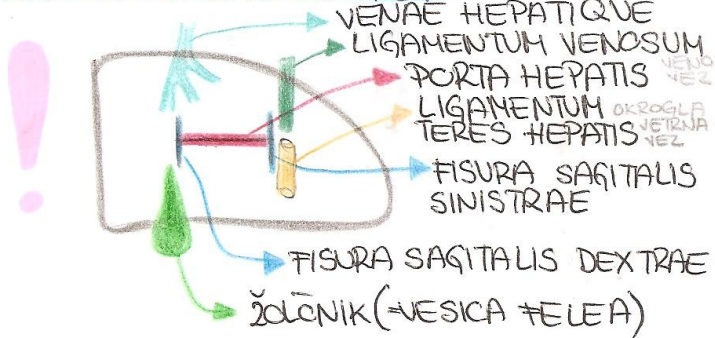
**FRONTALNI PREREZ
ŽELODCA**



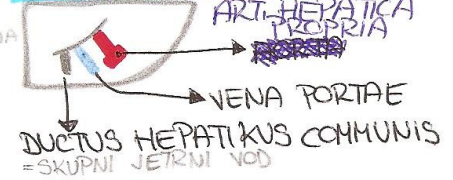
**FRONTALNI PREREZ
TREBUŠNE SLINAVKE
IN DVANAJSTNIKA**

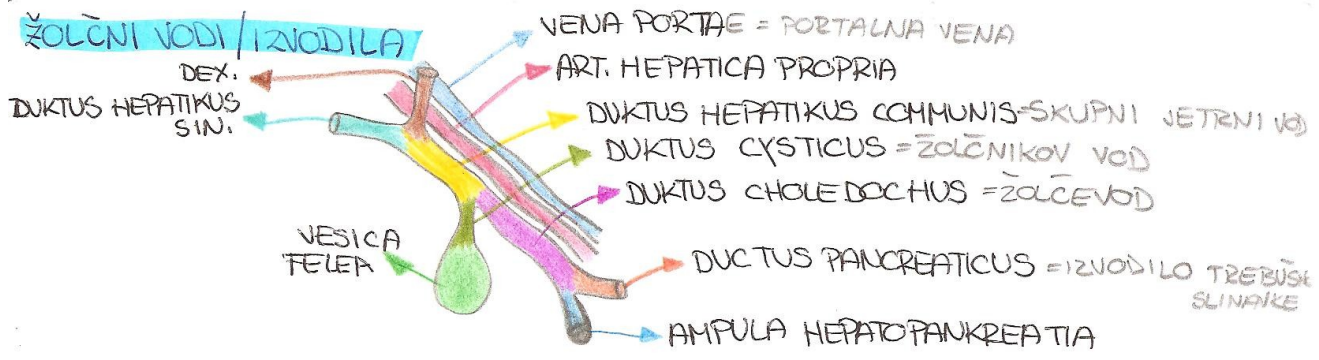


JETRA: VISCERALNA PLOSKEV

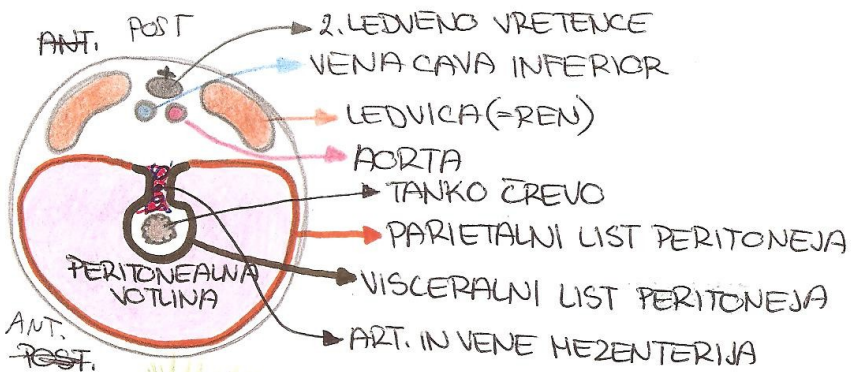


**KAVNSTOPA IN IZSTOPA
SKORI VENOPORTAE**

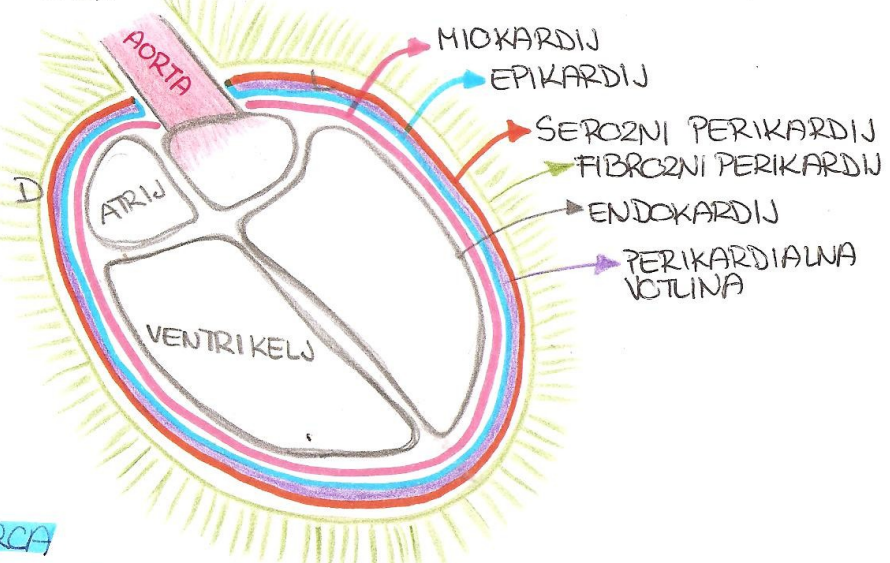




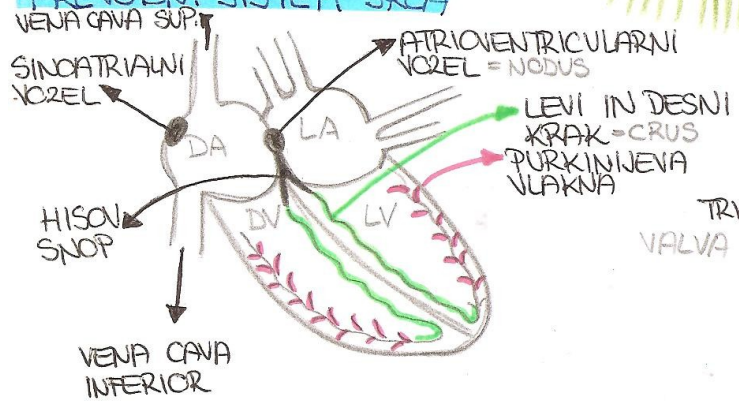
PREČNI / HORIZONTALNI PREREZ TREBUŠNE VOTLINE V VIŠINI L₂: PERITONEJ



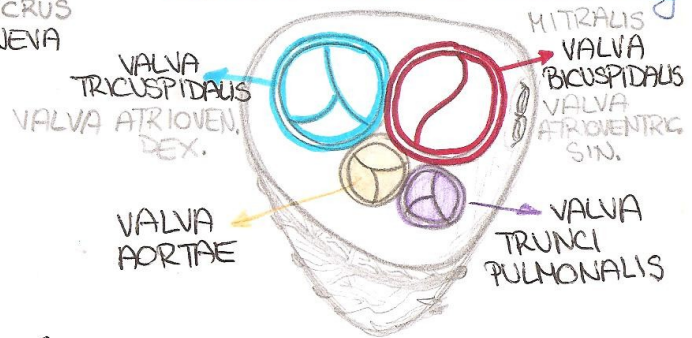
OBTOKILA: FRONTALNI PREREZ SRCA / SRČNE STENE



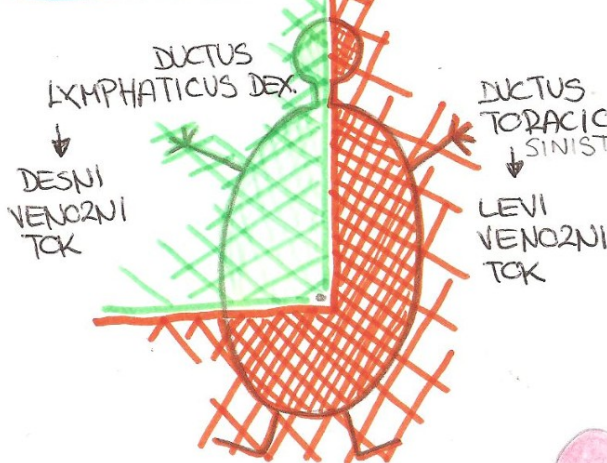
PREVODNI SISTEM SRCA



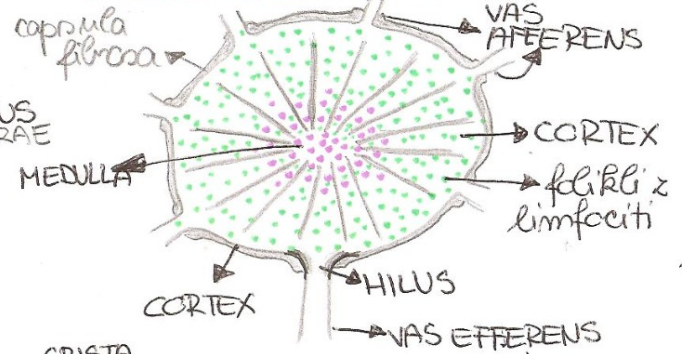
SRČNI SKELET OD ZGORAJ



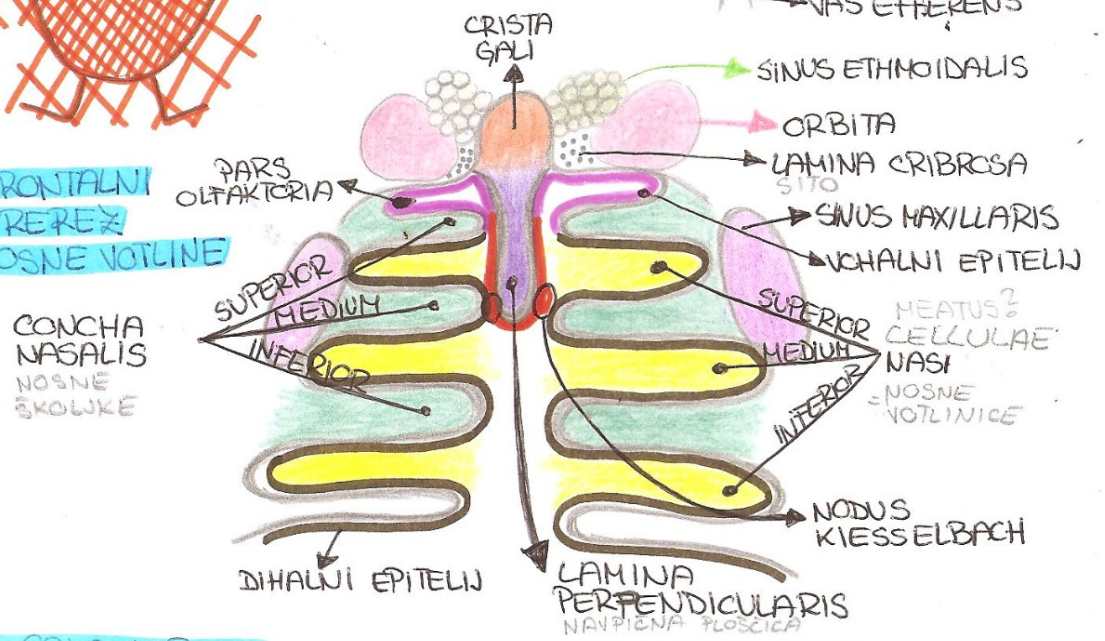
LIMFNI OBTOK



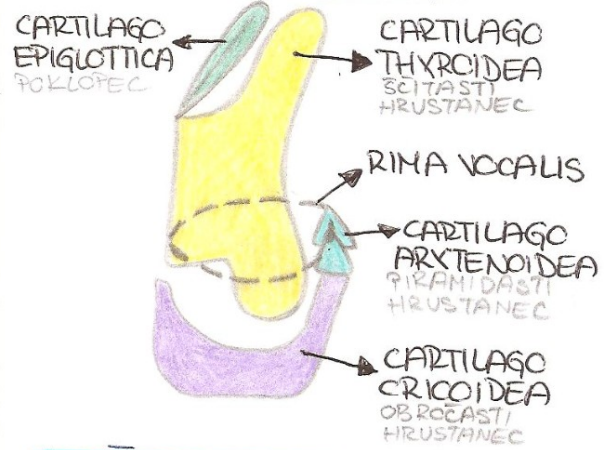
PREREZ BEZGANKE



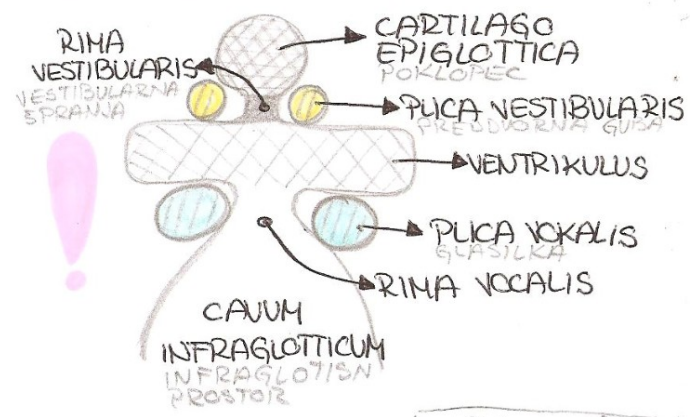
DIHALA: FRONTALNI PREREZ NOSNE VOTLINE



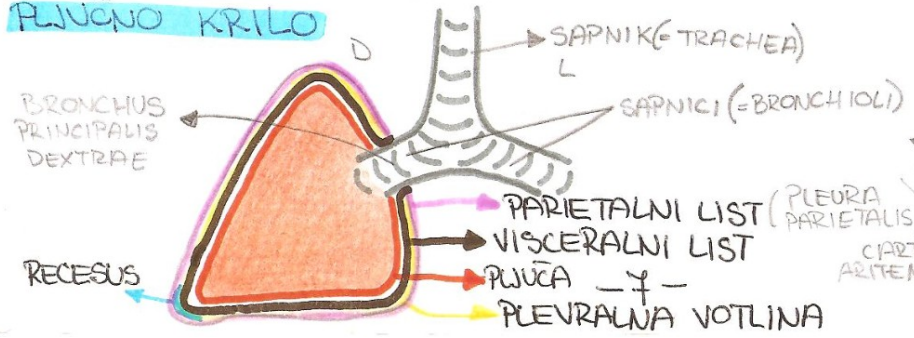
HRUSTANCI GRLA: LARINX



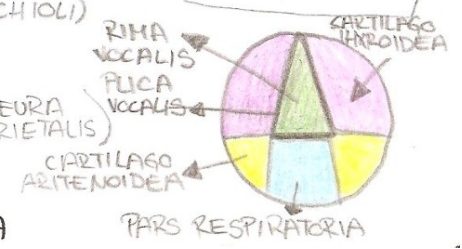
FRONTALNI PREREZ GRLA



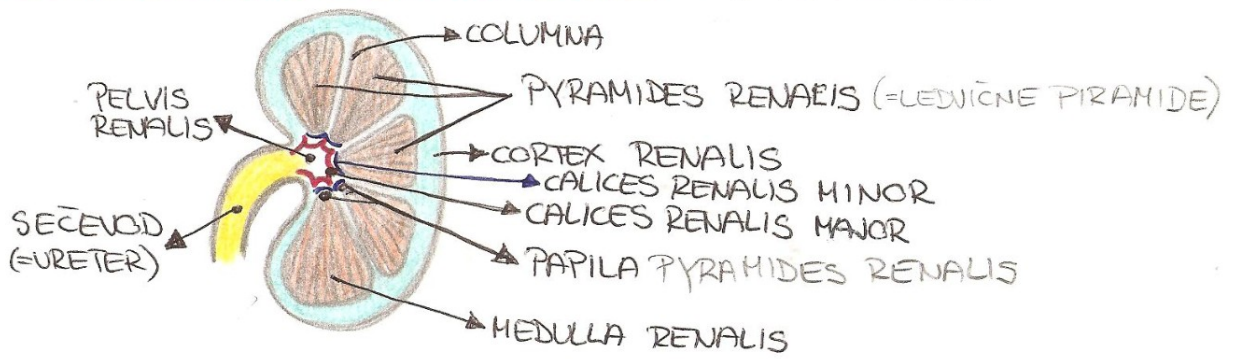
PLUČNO KRILU



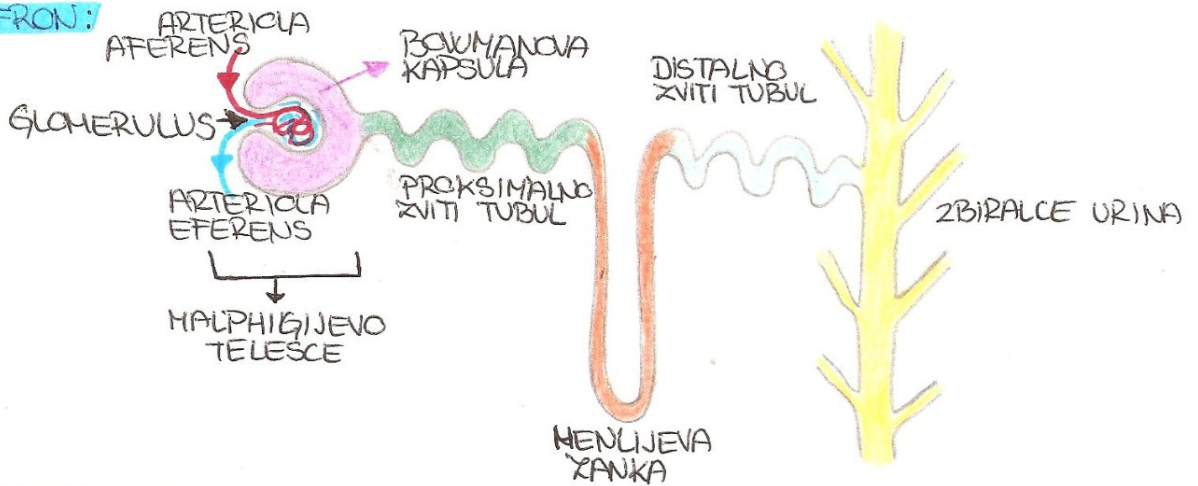
GRLO OD ZGORAJ



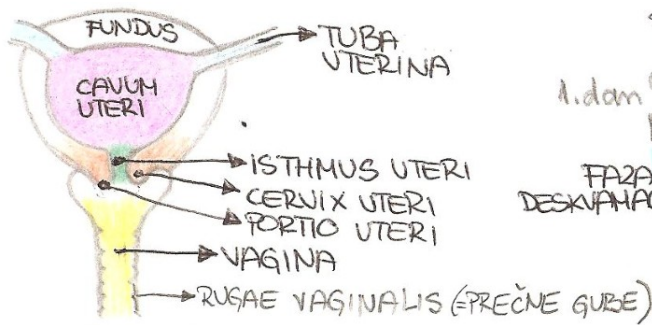
SEČILA: FRONTALNI PREREZ LEDVICE - CELNI PREREZ



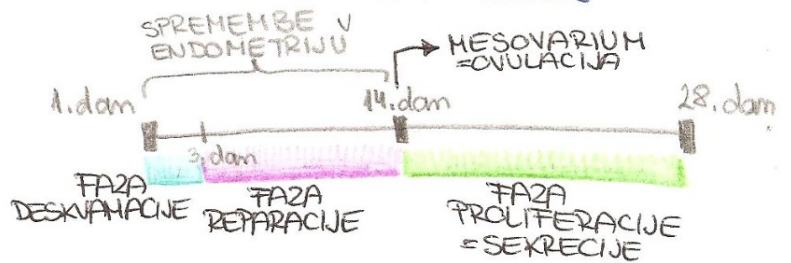
NEFRON:



ŽENSKA SPOLOVILA: MATERNICA, NOŽNICA FRONTALNO



MENSTRUALNI CIKLUS



FRONTALNI PREREZ JAJČNIKA

